



TRITÓN



EXCLUSIVE VILLE

*TRANQUILITY MORE
SERVICES*



**MEMORY
OF QUALITIES
MAR BALTICÒ**

Proyec:MAR BALTICÒ

Plot :C\ numancia - Pilar de la horadada (ALICANTE) Promoter:
OCEANO LEVANTE Architecture: SALVADOR GRIÑAN
MONTEALEGRE

PAG WEB :<http://tritondeluxe.com/promociones/mar-baltico/>



VILLAS EXCLUSIVAS

Tranquilidad mas servicios



**MEMORIA
DE CALIDADES
MAR BALTICÒ**

INDICE. INDEX

0.0 Calidades y garantías villas Mar Baltico.....	pág-4
1.0 Memoria descriptiva	pág-5
2.0 Emplazamiento.....	pág-6
3.0 Planos de planta modelo tipo.....	pág-7
4.0 Cimentacionyestructura.....	pág-8
5.0 Fachada y muros exteriores.....	pág-9
6.0 Pavimento de vivienda.....	pág-10
7.0 Alicatados y baños.....	pág-11
8.0 Carpintería exterior.....	pág-12
9.0 Carpintería interior.....	pág-13
10.0 Puerta principal.....	pág-14
11 Cocina.....	pág-15
12 Electrodomesticos.....	pág-16
13.0 Iluminación interior y exterior.....	pág-17
14.0 Climatización.....	pág-18
15.0 Exteriores.....	pág-19

0.0 CALIDADES Y GARANTÍAS EN SU VILLA MAR BÁLTICO.

1. PARA SU SEGURIDAD

- 1.1 Each house has a perimeter fence on the ground floor, at a height of 1.70 meters, above ground level executed with masonry and finished with a single layer of waterproof and colored mortar..
- 1.2 The main door of your home is armored and with security locks, being high-end in quality and security.
- 1.3 The entire structure of the house is based on a reinforced concrete gantry system, in accordance with C.T.E, (technical building code).
- 1.4 The electricity installation is in a high degree with independent circuits, according to C.T.E regulations and hot water has an AERO-TERMIA system.
- 1.5 The whole house enjoys an air chamber surface, giving it security against humidity inside and outside your home
- 1.6 The entire house is designed, structured, and executed to obtain an energy efficiency, category B.

2. PARA SU COMODIDAD

- 2.1 Mar BÀLTICO, is made up of 6 independent villas, each with its own parking space on its plot.
- 2.2 All the houses have their own plot where they can enjoy their own gardens, terraces and swimming pools, (this is optional).
- 2.3 All floors including bathrooms, have porcelain material coating, large format, in first qualities.
- 2.4 The shutters are made of high quality aluminum, blue-gray color.
- 2.5 The glass of the windows allows, through its graduation, greater solar control, the lighting will be led type, both indoors and outdoors, throughout the house.
- 2.6 The air conditioning of your home will be through a central duct system, being present throughout the home, being prepared to put cold and / or heat machinery.
- 2.7 The kitchen is assembled with furniture, hood, oven, ceramic hob , finished with top quality skirting and silestone worktop.
- 2.8 The energy efficiency of household appliances are category (A).

INDEX

0.0 QUALITIES AND GUARANTEES IN YOUR VILLA MAR BÀLTICO.

3.FOR THE BEAUTY OF YOUR HOME.

- 3.1 The interior doors are made of insitu white lacquered wood, with stainless steel design hardware, the locks and handles will be of the same style.
- 3.2 The entire plot of the house, will enjoy a sunny terrace, large gardens, swimming pool (optional) and enclosures at the height of 1.70 mtr.
- 3.3 The stone of the facades is natural, ennobling and giving a feeling of spaciousness and internal well-being. The exterior wall of the kitchen is lined with porcelain stoneware, chocolate color, giving a contrast with the rest of the harmonious and minimalist house.
- 3.4 The minimalist lines of these homes are designed to have a constant harmony over time, and that your home is always elegant, modern and beautiful.
- 3.5 The white stone, porcelain stoneware, aluminum and glass facades will create a harmony of very elegant materials

4.FOR YOUR ENERGY SAVING.

- 4.1 All homes are designed as a completely insulated cube, which allows a degree of comfort in temperature, significant energy savings, it has an air chamber in high-density extruded polythene facade, under vertical and horizontal pavements.
- 4.2 Improved its efficiency by generating a lower air chamber, made of the entire foundation with reinforced concrete and its sanitary floor.
- 4.3 To make the insulation more efficient, the aluminum carpentry achieves the RPT (thermal bridge break) and the window panes are sheets of
(4 + 4/8/3 + 3)

All these details and those that remain to be indicated in this summary, are at your disposal. Please request.

BULDING SPECIFICATIONS.

1.0 Descriptive memory

AGENTES/GENTS.

Promotor/Developer:OCEANO LEVANTE S.L

Nombre/Name:MAR BÀLTICO

Dirección/Andress:Calle .Reina sofia,nº2,esquina,c/Mayor,Pilar de la horadada:Alicante,cp:03190

Representante/Representative: D.Diego Gómez Martinez.D.N.I: 74176202-Y

Arquitectura/Architecture:GRIÑAN MONTE ALEGRE ARQUITECTO S.L.P

Nombre/Name: SALVADOR GRIÑAN MONTE ALEGRE

Dirección/Andress:Plaza ESPAÑA nº1 San javier,Telefono: 636-45-58-77

The other intervening agents will be defined in the project execution.

the technical management the right to modify design,quality,materials, and even specifications at its deiscretions require proper design and execution of the work.

2.0 Site .



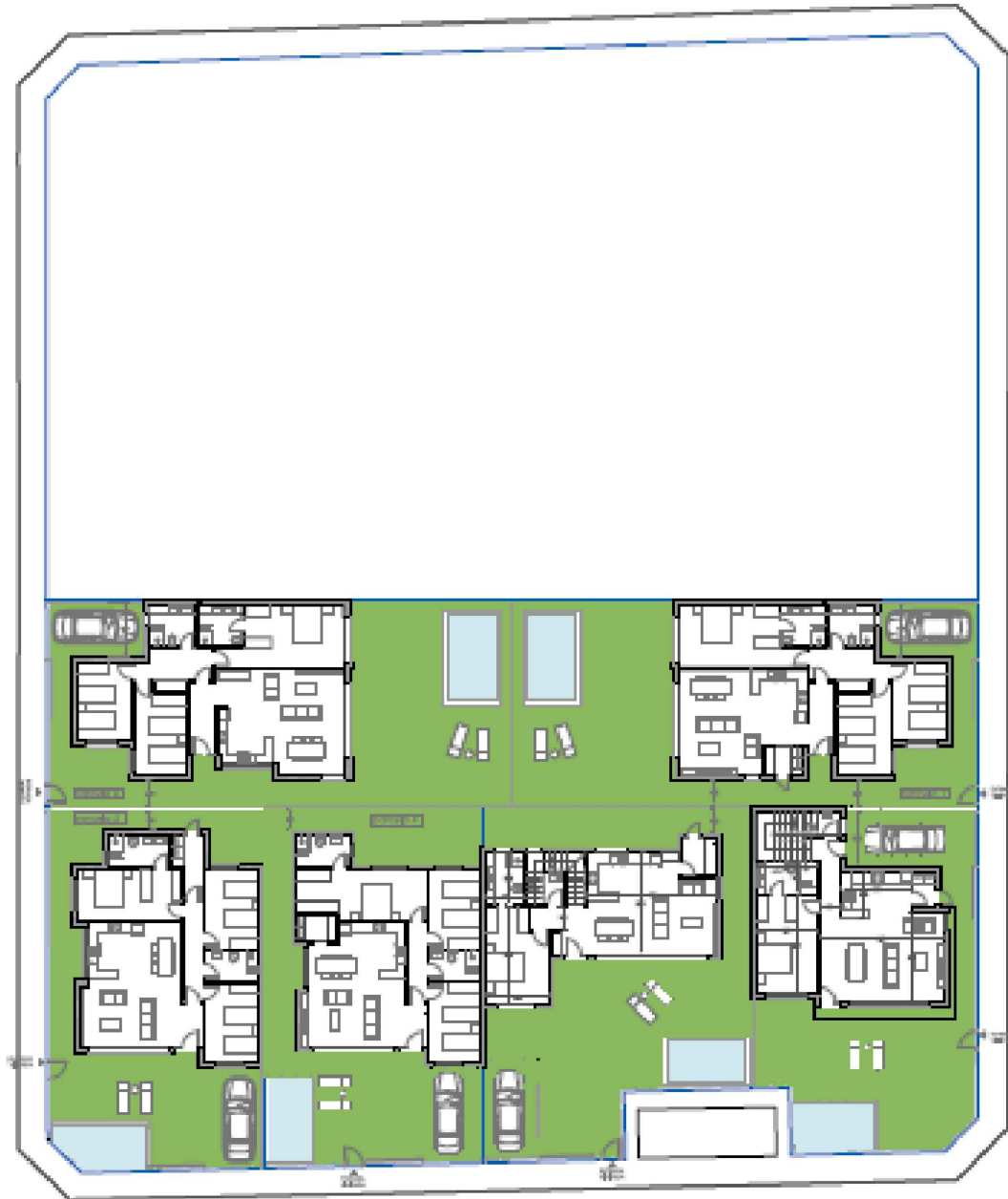
PLOT: Calle Pilar Perez Aguirre, 16, 03190 Pilar de la Horadada, Alicante, Alicante

2.0 Costa Blanca location

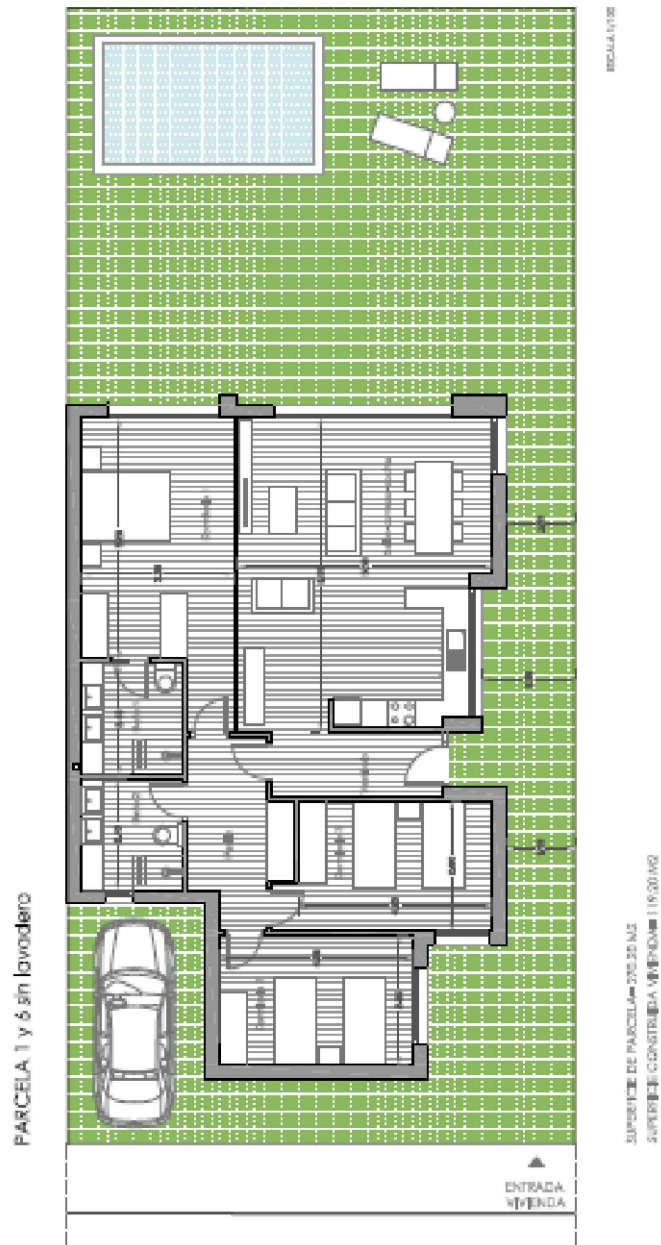


PLANO COSTA BLANCA

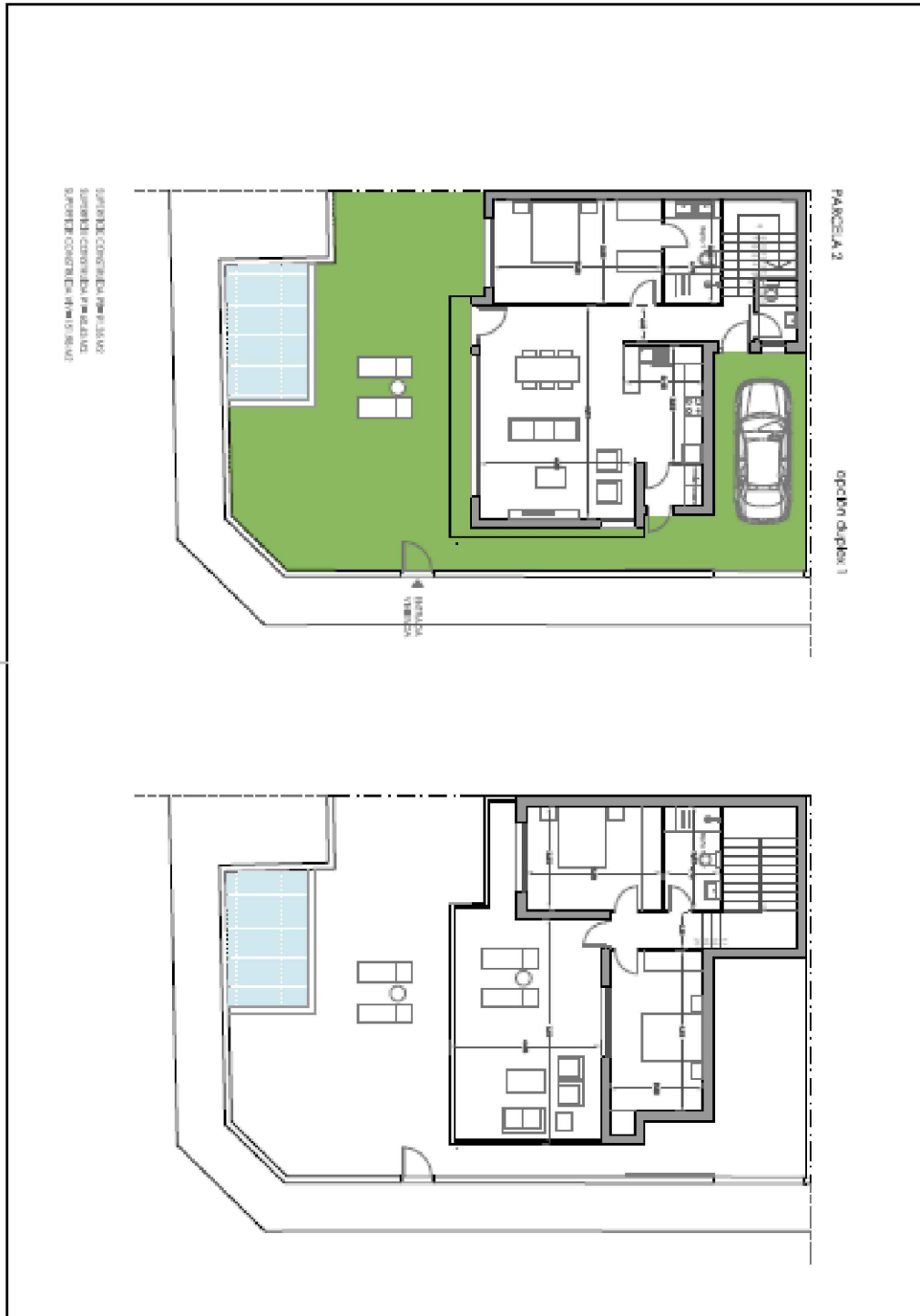
3.0 Plot Plan.



3.0 Plans of panta bungalows.

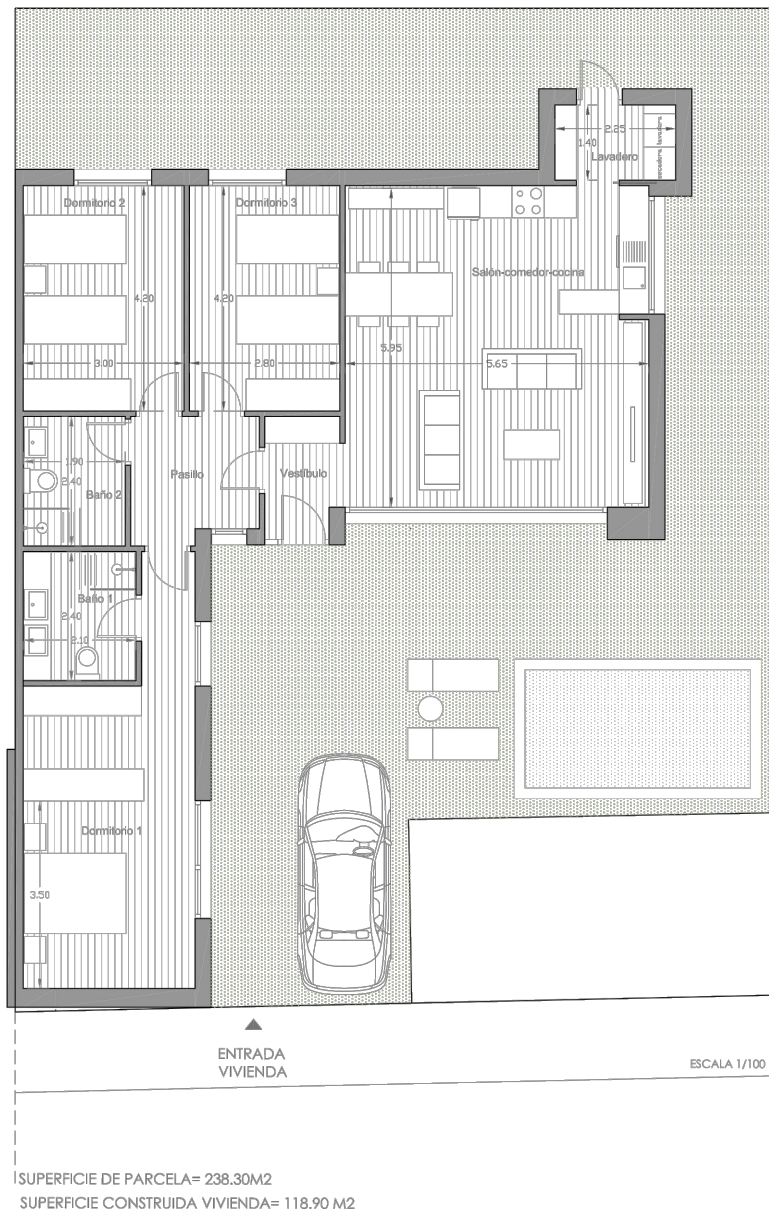


3.0 Plans of panta bungalows.



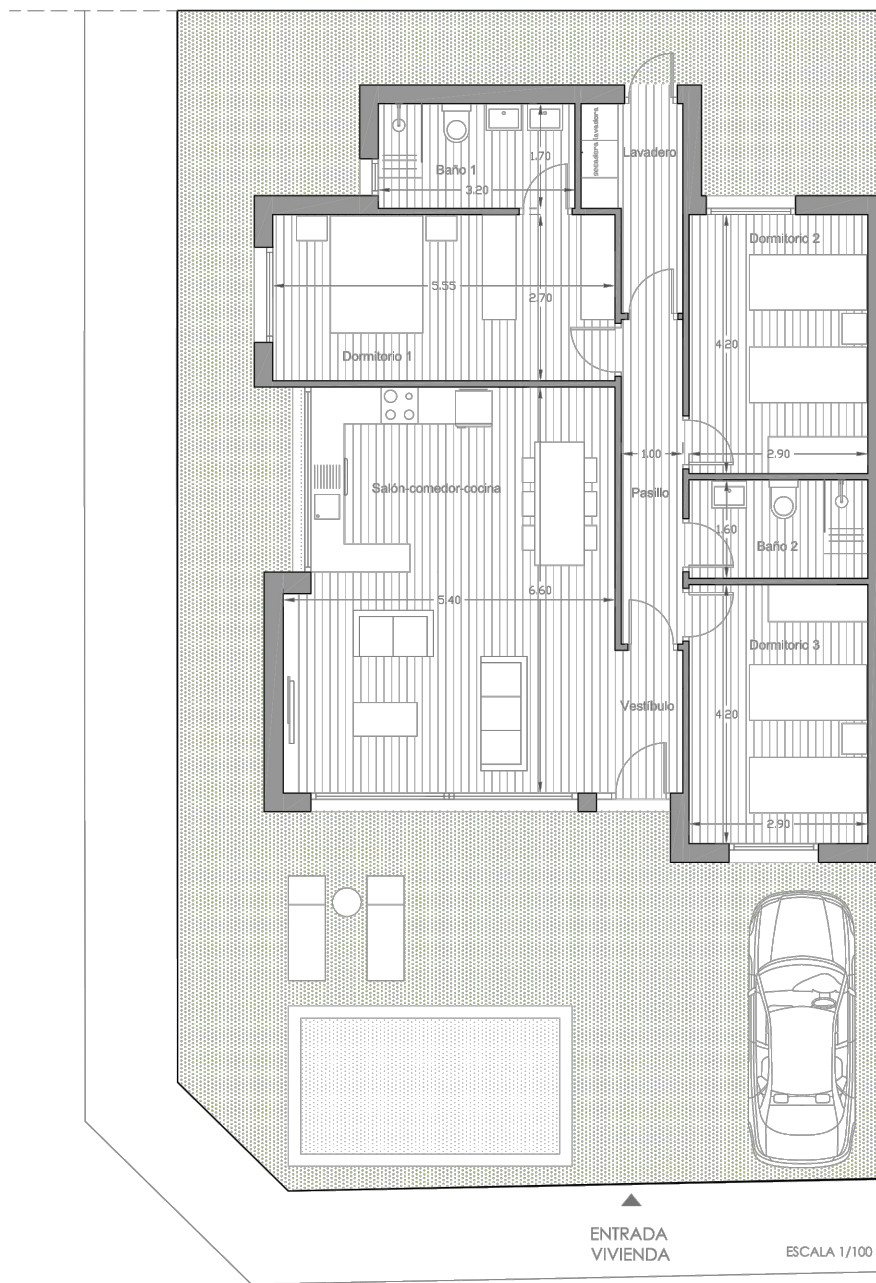
3.0 Plans of panta bungalows.

PARCELA 3



3.0 Plans of panta bungalows.

PARCELA 5



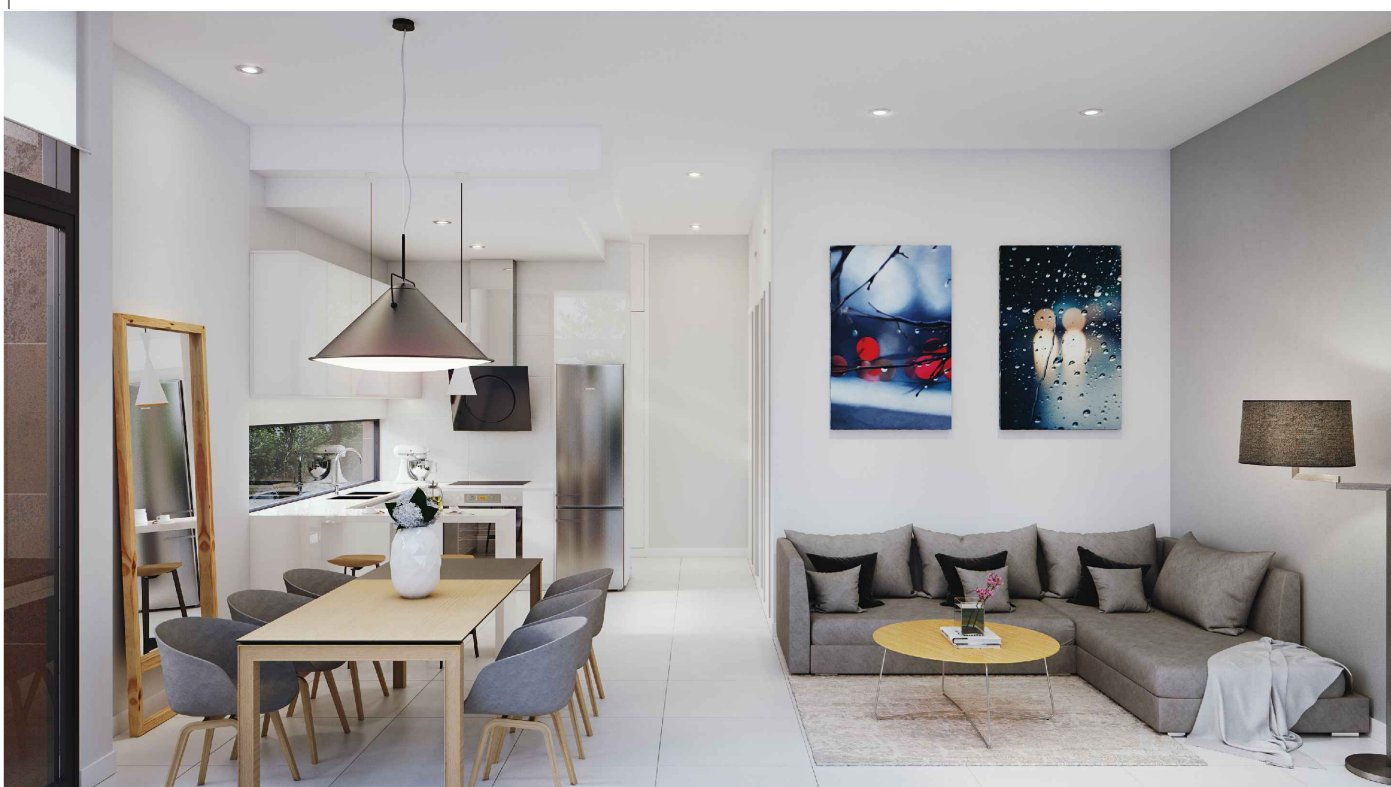
SUPERFICIE DE PARCELA= 217.35 M2
SUPERFICIE CONSTRUIDA VIVIENDA= 112.85 M2

5.0 Exterior and walls.



6.0 Housing pavement.

PHOTOS BY FLOOR EXAMPLE MODE.



Acabados en suelos interiores y exteriores

PORCELANOSA®

PLAZA

7.0 Bathroom finishes .

Design and comfort in your bathrooms, tiling of floors and walls, faucets and top quality toilets

PHOTO MODE EXAMPLE.



Tiled with 1st quality tiles. received with pre-plastered adhesive, taped to the height of the false ceiling, thus guaranteeing its waterproofing.

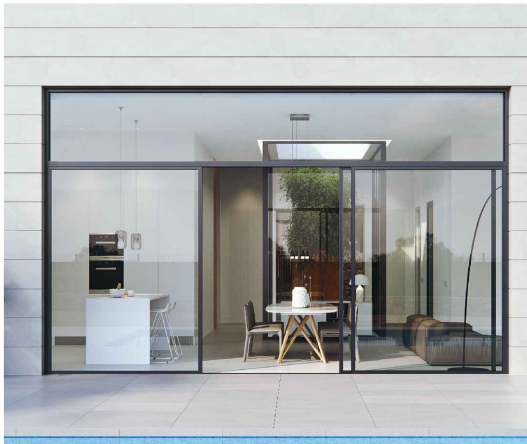
TRES

PORCELANOSA®



8.0 outdoor carpentry.

Carpintería de aluminio con rotura de puente térmico Aluminium frames with thermal break

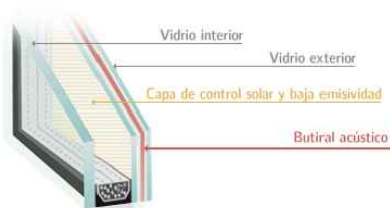


From the EXTRUAL house. Extruded aluminum sliding and folding window and balcony system E-80RPT with thermal bridge break for large enclosures, with an E-54 system.



photos modes examples of aluminum carpentry

From the EXTRUAL houses, a folding sliding window and balcony system in extruded aluminum E-80RPT with a thermal break, for large enclosures. It is complemented by the E-54 system for integration of fixed and practicable cloths.



8.0 Carpintería exterior.

Persianas de aluminio



external shutters

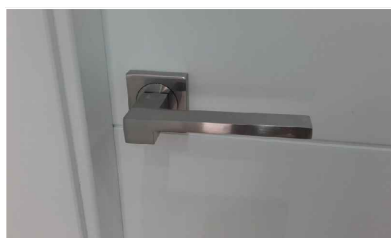
photos modes exemples .



9.0 INSIDE CARPENTRY

Inside doors.

Door 203 cm high in DM, lacquered in the house, for a perfect finish, designer hardware in stainless steel.



Stainless steel lock

9.0 Iside wood carpentry.

wardrove

wardrover floor-to-ceiling cabinets with interior doors.
.Distribución interior con estantes, cajoneras y percheros fabricados a medida.



7.0 FRONT DOOR.

Front Door.

The entrance door to the house is armored with a lock with three closing points, four anti-lever hinges with two security points, subframe.



 **GARDESA**
ASSA ABLOY

11.0 KITCHEN.

It is designed based on the client's premises, equipped with high and low furniture, with a complete series of high-quality appliances (oven, ceramic hob, hood and sink with the highest efficiency class (A))

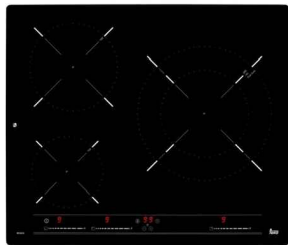
PHOTO EXAMPLE OF KITCHEN FURNITURE.



12.0 KITCHEN.



- dh-785 teak hood
- Electronic controls
- Digital display
- 2 LED lamps
- Three speeds + intensive
- Digital indicator of selected speed
- Programmer of the aspiration time
- Stainless steel decorative metal filters



Teka-ib615 plate
Independent
Type of glass ceramic heat
programming up to 99 cooking time.



Teak oven: hsb635
zero scratch anti-fingerprint
Energy rating A + Teka
Hydroclean cleaning system
Capacity: 70 liters 8 working
versions



Undercounter scrubber

13.0 Electricity and lighting .

Interior inside.



ILUMINACIÓN EXTERIOR



Sockets inside and outside

AIR-CONDITIONING SYSTEM.



Air pre-installation system through duct

Domestic hot water supply system, with a low-profile solar panel with an integrated 150-liter tank and a 100-liter electric boiler.



15 POOL, Optional

Swimming pool with purification system (optional)



- SISTEMA DE DEPURACIÓN.
- Equipo de filtración.





EXCLUSIVE VILLAS
Peace of mind more services



**MEMORY
OF QUALITIES
MAR BALTICÒ**