



bahia homes

H O R A D A D A

14 Viviendas tipo dúplex

Avda. de la Venta, Pilar de la Horadada















Avenida de la Venta



29E

29D

29C

29B

29A



40

38

36

34

32

30

28

Calle Cristo Crucificado



72

70

Avenida Cotradias





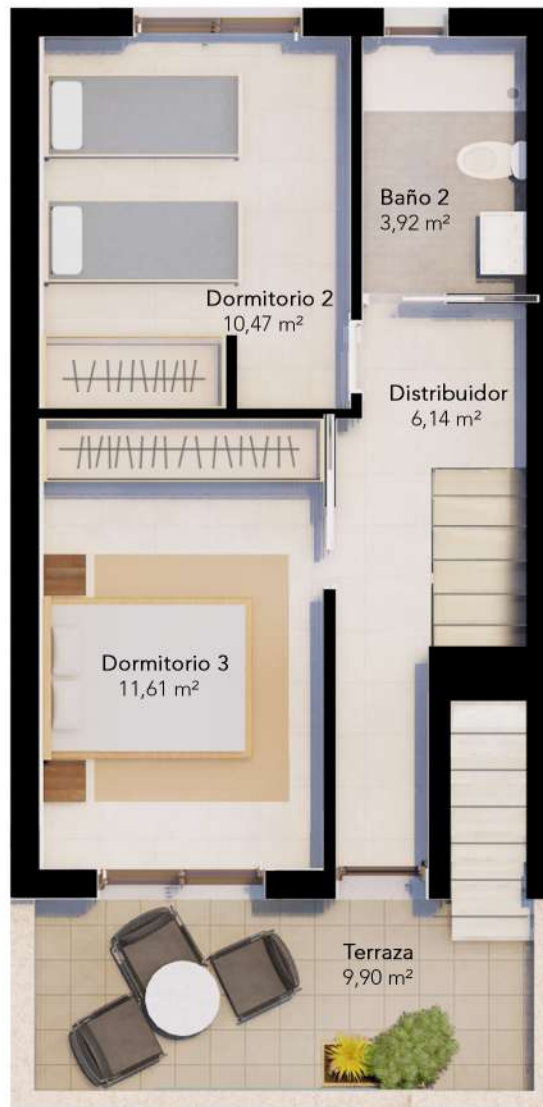

bahia homes
HORADADA



 <p>Floor heating in bathrooms, living room and kitchen area.</p>	 <p>Pre-installation of air conditioning system by air ducts</p>	 <p>Reinforced front door with five lock points and crowbar-proof system.</p>	 <p>Communal swimming pool and heated jacuzzi.</p>
 <p>Kitchen furnished with high and low furniture. Choice of colors *.</p>	 <p>Outdoor LED lighting. Preinstalation of spotlights.</p>	 <p>Interior woodwork. White access doors and wardrobes. Fully-lined fitted wardrobes</p>	 <p>Outdoor gym.</p>
 <p>White goods. Fridge, oven, hob, extractor fan and washing machine included.</p>	 <p>Electricity.Niessen Zenit light switches or similar.</p>	 <p>Window roller shutter with thermal and acoustic insulation.</p>	 <p>Kitchenette in solarium.</p>
 <p>Bathroom vanities and mirrors.</p>	 <p>TV, phone and optical fiber installations.</p>	 <p>Aluminum carpentry with thermal bridge break, double glass and air chamber.</p>	 <p>Shower in solarium.</p>
 <p>Shower screens and shower trays.</p>	 <p>Installation of atherothermal system for DHW (Domestic Hot Water).</p>	 <p>Plaster moulding in living room</p>	 <p>Foundation and structure in reinforced concrete.</p>
 <p>Bathroom suites. Roca in white with soft-closing.</p>	 <p>Painting on plaster on walls. Odorless, ecological and hypoallergenic. Termination in good sight.</p>	 <p>Porcelain flooring and ceramic tiles up to the ceiling, to choose *</p>	 <p>Encimera cocina en Silestone o similar.</p>
 <p>Bathroom taps and thermostatic shower with adjustable bar and shower head.</p>	 <p>Perimeter enclosure composed of double ceramic brick and insulating.</p>	 <p>Stoneware terraces waterproofed with asphalt roofing felt and non-slip porcelain exterior floor tiles.</p>	



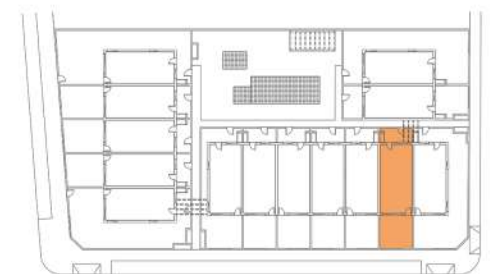
PLANTA BAJA
GROUND FLOOR



PLANTA PRIMERA
FIRST FLOOR



SOLARIUM



PLANTA BAJA 52,22 m²
PLANTA PRIMERA 40,32 m²

VIVIENDA 30

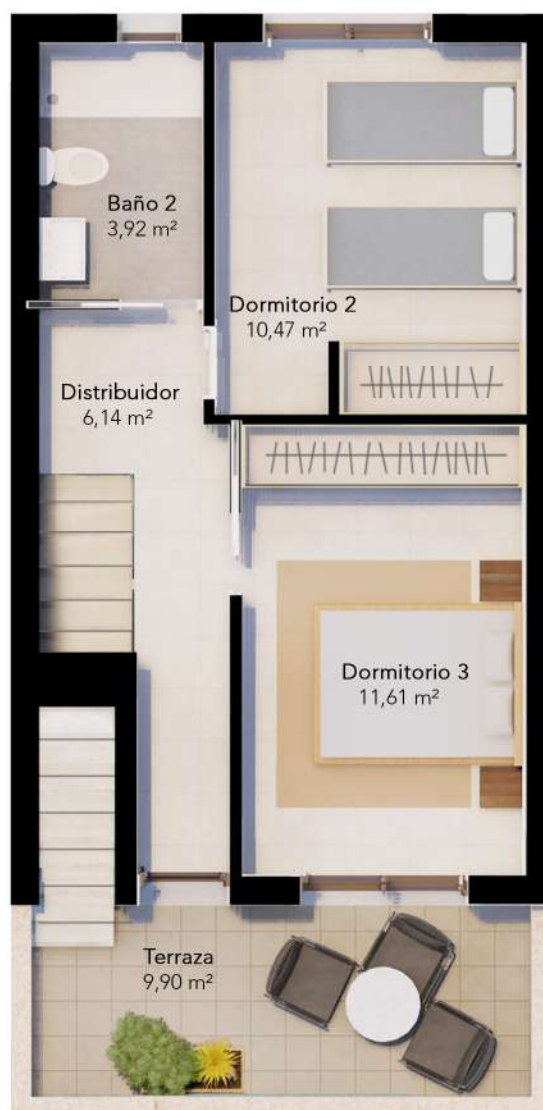
TOTAL CONSTRUIDO 92,54 m²



bahia homes
HORADADA



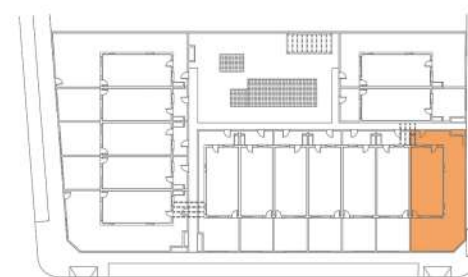
PLANTA BAJA
GROUND FLOOR



PLANTA PRIMERA
FIRST FLOOR



SOLARIUM



PLANTA BAJA 53,81 m²
PLANTA PRIMERA 41,61 m²

VIVIENDA 28

TOTAL CONSTRUIDO 95,42 m²



Nº	SOLARIUM	D/B B/B	TERRAZA/ TERRACE	M² CONST.	FECHA ENTREGA	PRECIO/ PRICE	
28	41,25 m2	3/2	85,70 m ²	95,42 m2	KEY READY	289.900 €	SHOWHOUSE
30	41,25 m2	3/2	35,89 m ²	92,54 m2	KEY READY	254.900 €	
32	41,25 m2	3/2	35,89 m ²	92,54 m2	KEY READY	254.900 €	
38	41,25 m2	3/2	35,89 m ²	92,54 m2	KEY READY	254.900 €	
70	41,25 m2	3/2	100,50 m ²	95,42 m2	KEY READY	289.900 €	

