

AVILESES - MURCIA



avileses
aire limpio
VILLAS AND MAISONNETTES



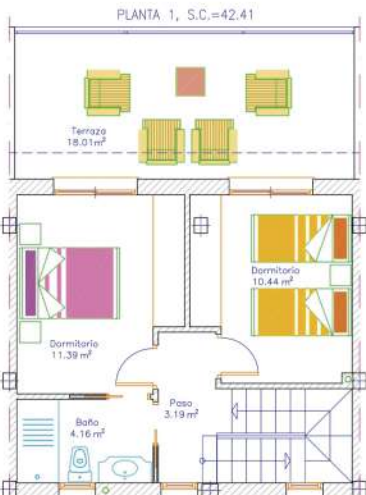
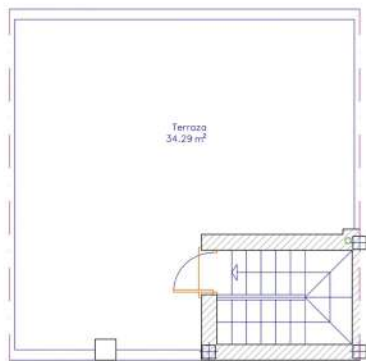
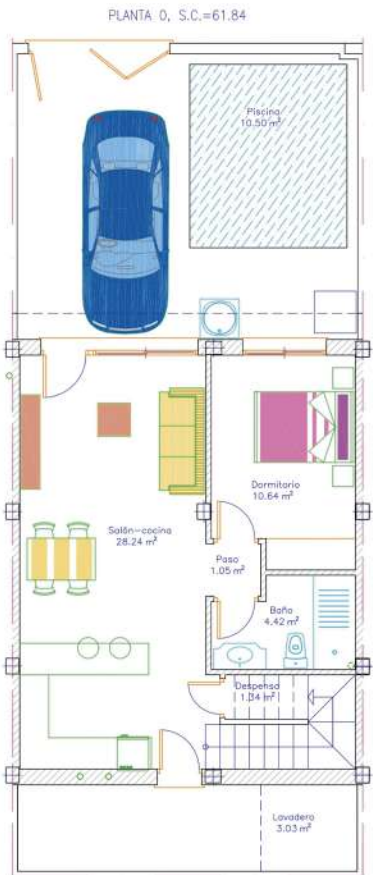






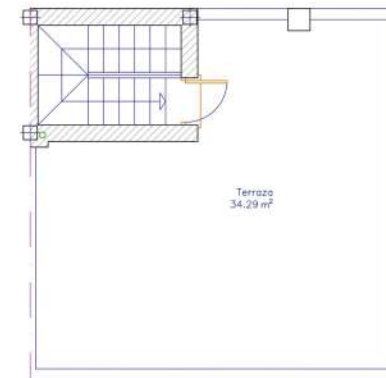
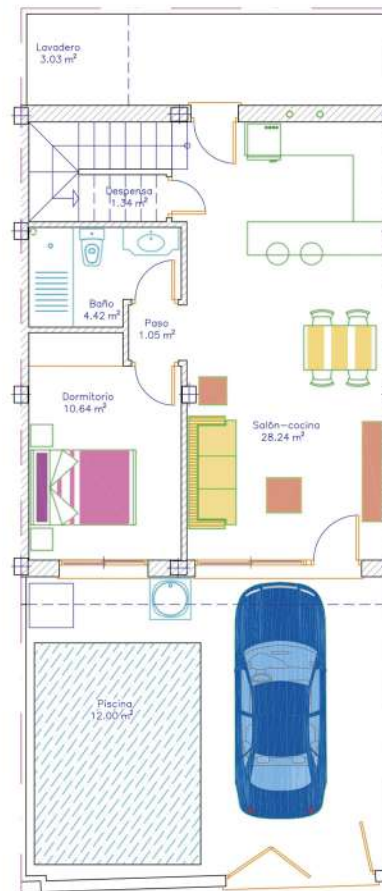


TORREON, S.C.=2,84

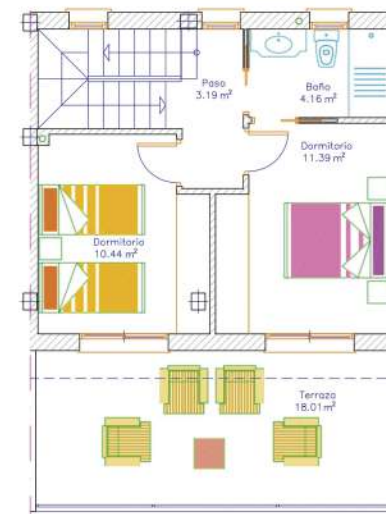


TORREON, S.C.=2,84

PLANTA 0, S.C.=61.84



PLANTA 1, S.C.=42.41



VIVIENDA 2

Sup. parcela=107,08m2
 Sup. construida=107,09m2
 Sup. terrazas=52,30m2
 Sup. piscina=10,50m2



VIVIENDA 12

Sup. parcela=106,72m2
 Sup. construida=107,09m2
 Sup. terrazas=52,30m2
 Sup. piscina=12,00m2



Download
Quality List & Floor Plans



