

 **Soul** Mediterranean  
Inspiring Homes







 **Soul** Mediterranean  
Inspiring Homes

Residencial Soul plans bright, welcoming and fresh spaces, where the avant-garde and timeless elegance of the Mediterranean essence merge, perfect for living comfortably on the Costa Blanca. All with the Patrimi Resorts quality seal.

The images included in this document have no contractual value.







## Location

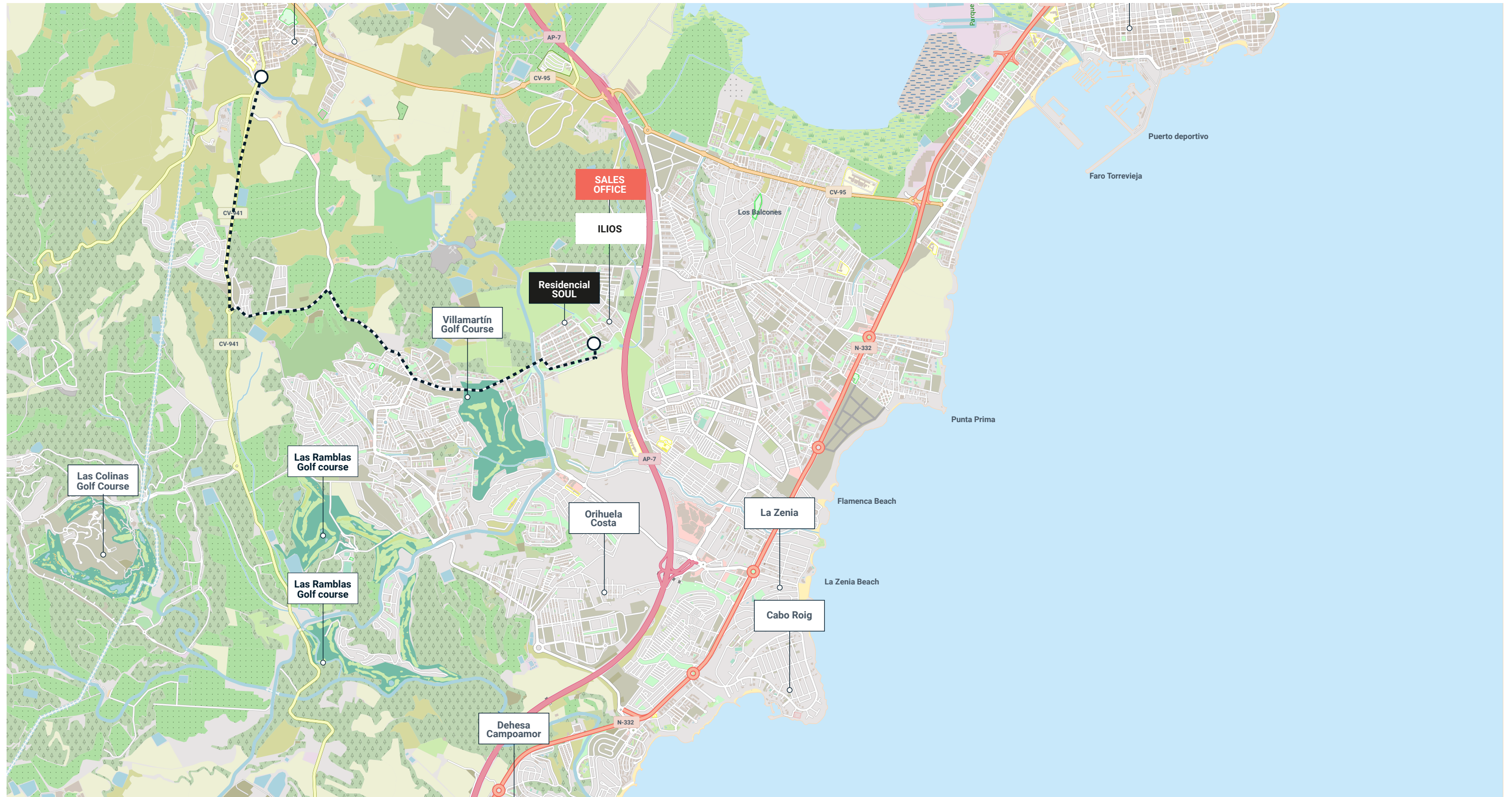
Residencial Soul is located in the pleasant surroundings of the Villamartín Golf Course, an urbanization located on the Costa Blanca, just 45 minutes from the Alicante airport, with access to a wide variety of services such as shopping centers, supermarkets and just 10 minutes from the spectacular sandy beaches of the area. This complex combines the tranquility of living in a quiet environment, having the comfort of all the services at your fingertips.



C. Rigoletto, 10, 03189 Orihuela, Alicante

## Near projects

ILIOS Project









# The project

Residencial Soul is a modern style complex of 12 properties with 2 bedrooms and 2 bathrooms, distributed on three different levels with terraces.

Most of the properties include private parking place and storage room on the garage level and, a couple of properties would enjoy private garden. The penthouses will have spacious solariums with amazing views to the area.

## Features



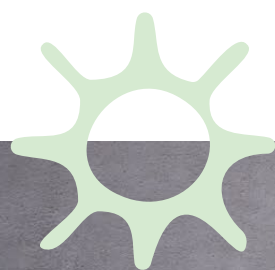
2



2



Communal pool

















# Quality life

Wellness and enjoyment for the owners who will also have services for their families such as international schools, playgrounds or the most recognised medical centers, enjoying their life in our 320 sunny days per year.

**PRIVACY**

Residencial Soul is a building located in one of the most privileged areas in Villamartin-PAU8, in a closed and private urbanisation totally finished.

**COMMUNITY**

Residencial Soul is part of a community already formed with private accesses with a nice communal parking area, gardens and a great swimming pool.









## Design

Bright spaces with Mediterranean touches, where elegance meets warmth. With finishes in neutral tones and a predominance of white, these apartments offer a serene and welcoming atmosphere. The open-concept kitchen effortlessly integrates with the living area, creating a modern and functional environment. Enjoy comfort and authenticity in every corner, where natural textures add a distinctive touch. Welcome to Mediterranean living, where light and simplicity come together to create a warm and inviting home.

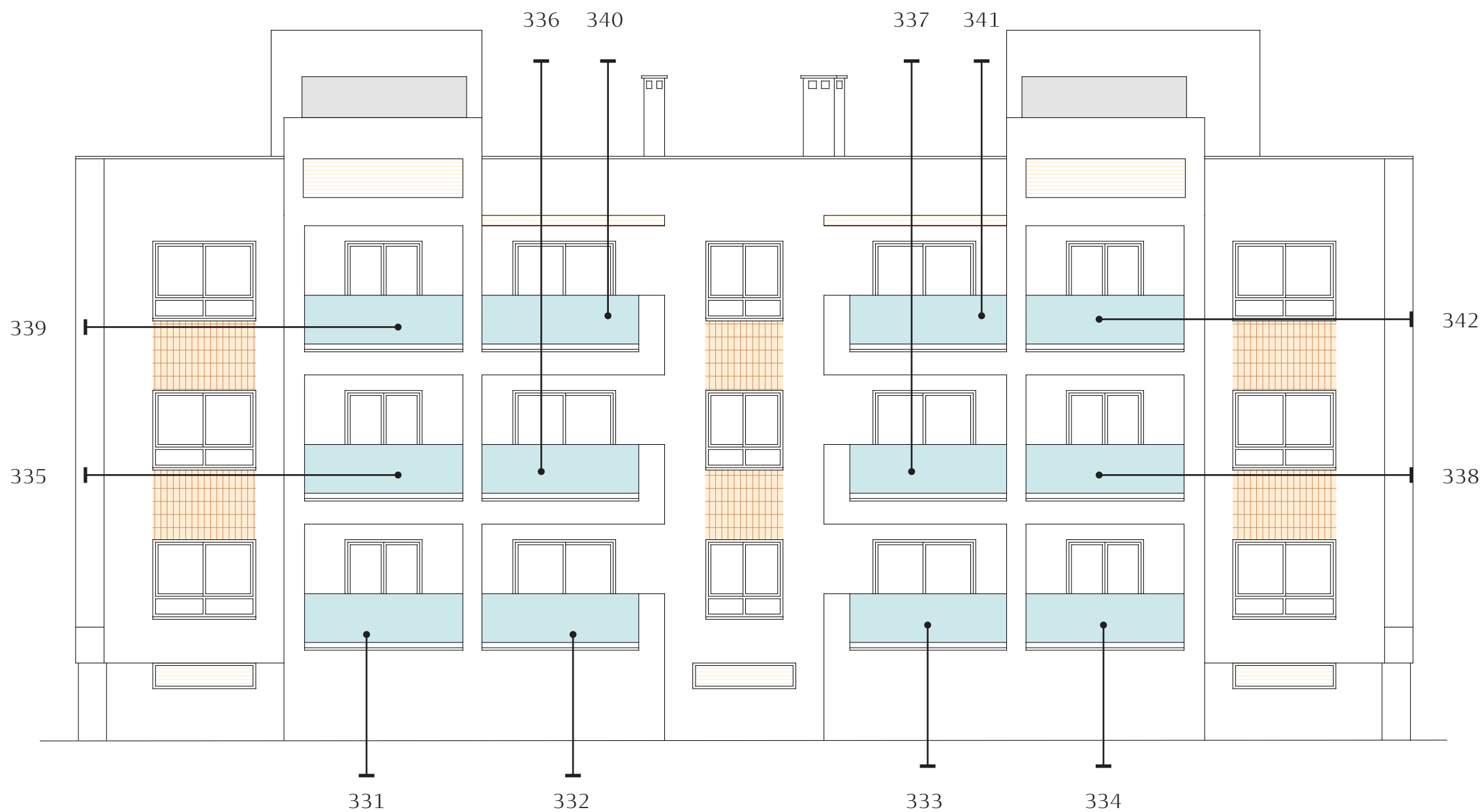








Surfaces



Ground floor	
331	79,67
332	74,27
333	73,87
334	79,04
First floor	
335	79,67
336	74,27
337	73,87
338	79,04
Penthouse	
339	79,67
340	74,27
341	73,87
342	79,04

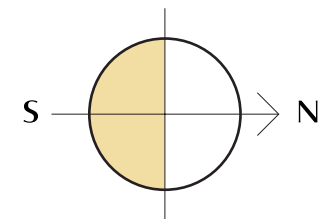
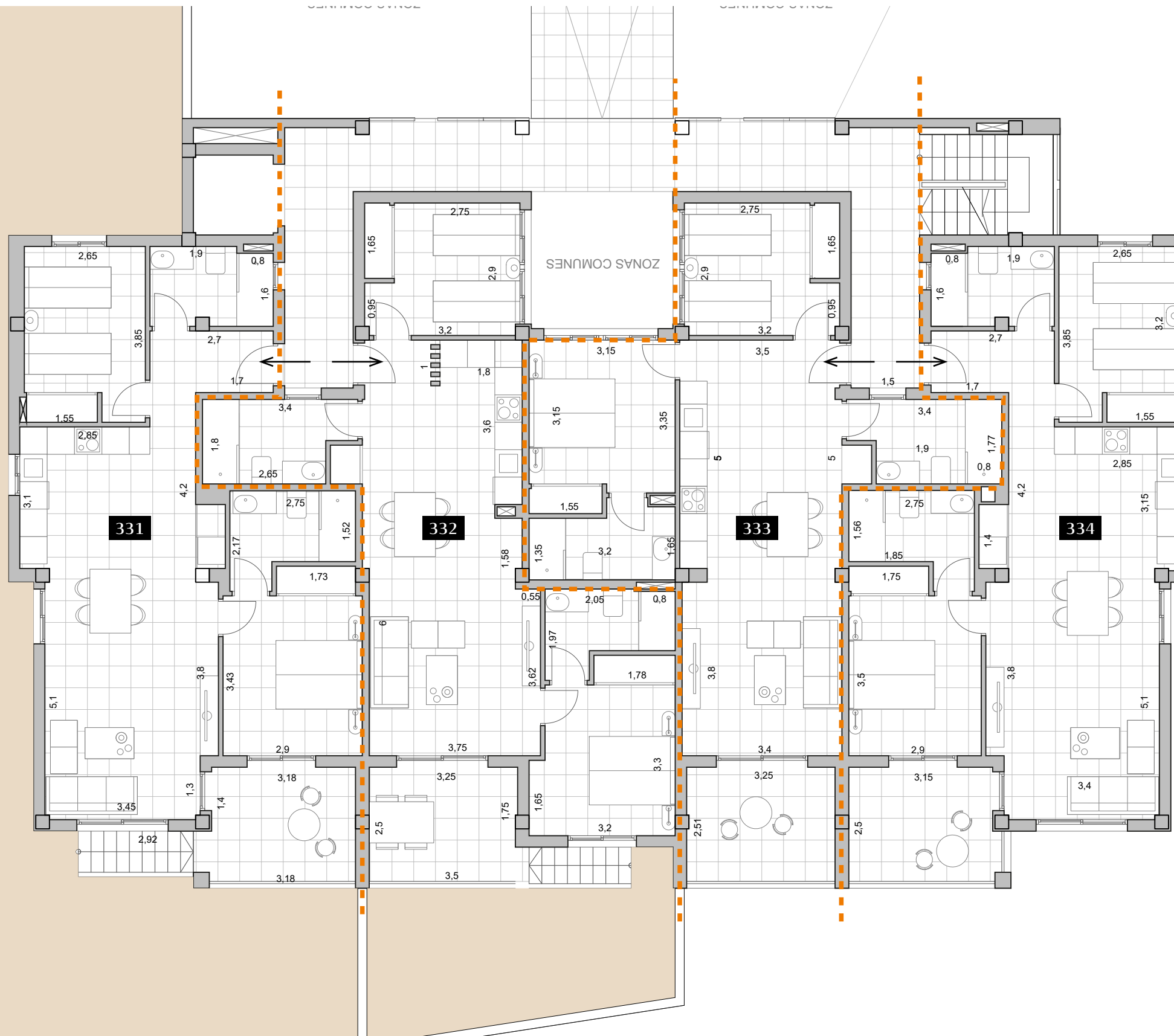


**Ground floor**  
331-332-333-334

2 2

**Ground floor**

331	79,67
332	74,27
333	73,87
334	79,04



All measures are expressed in M2.



Scale | 1:125  
A3



**Ground floor**  
**331**

2 2

**Build** 79,67

1	Hall	4,40
2	Bathroom 2	4,54
3	Bedroom 2	10,20
4	Bedroom 1	11,80
5	Bathroom1	4,86
6	Kitchen-living	32,07
7	Terrace	8,40
8	Garden	199,15

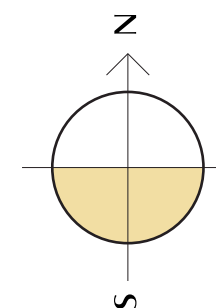
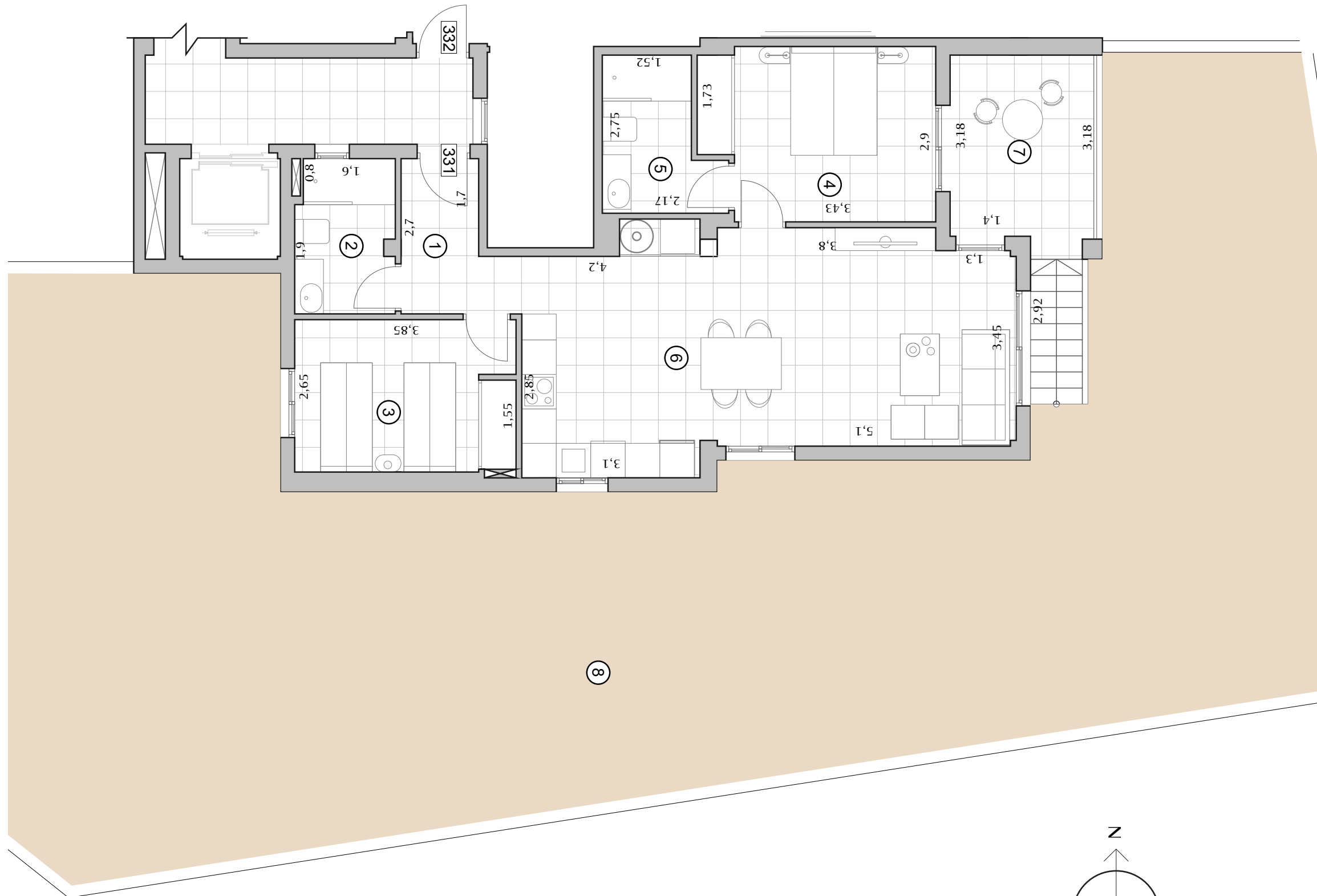
**Included**

<b>Parking</b>	18,46
<b>Storage</b>	3,13

All measures are expressed in M2.



**Scale** 1:75  
A3



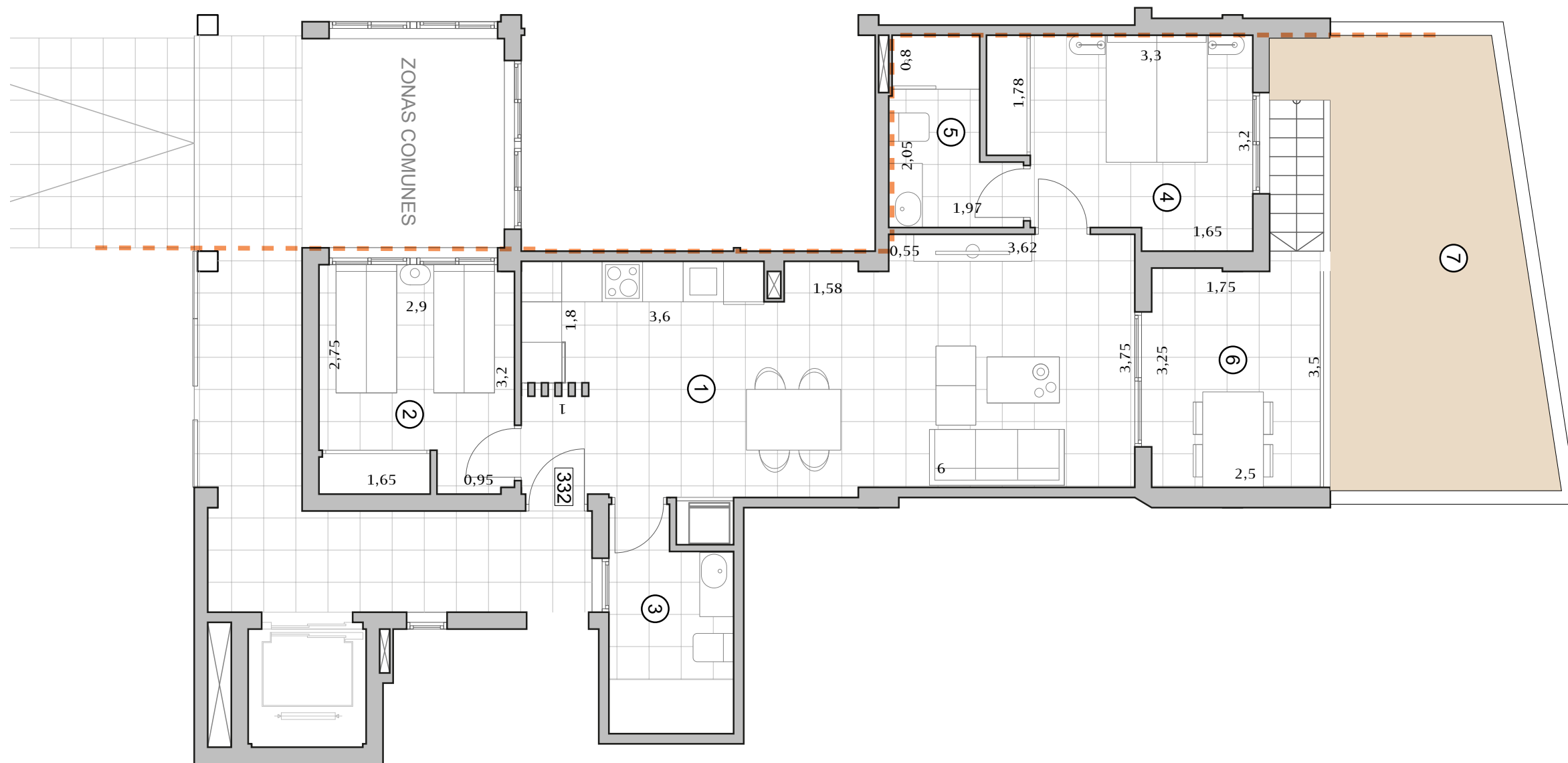


**Ground floor**  
332

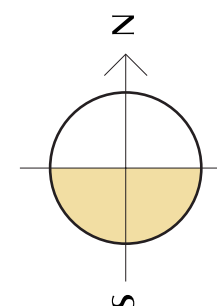
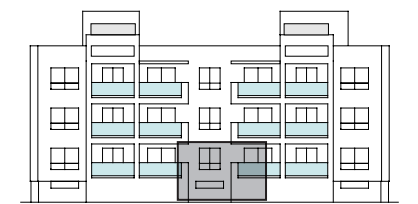
 2  2

**Build** 74,27

1	Kitchen-living	32,60
2	Bedroom 2	9,75
3	Bathroom 2	5,62
4	Bedroom 1	11,14
5	Bathroom1	4,43
6	Terrace	8,35
7	Garden	20,45



All measures are expressed in M2.

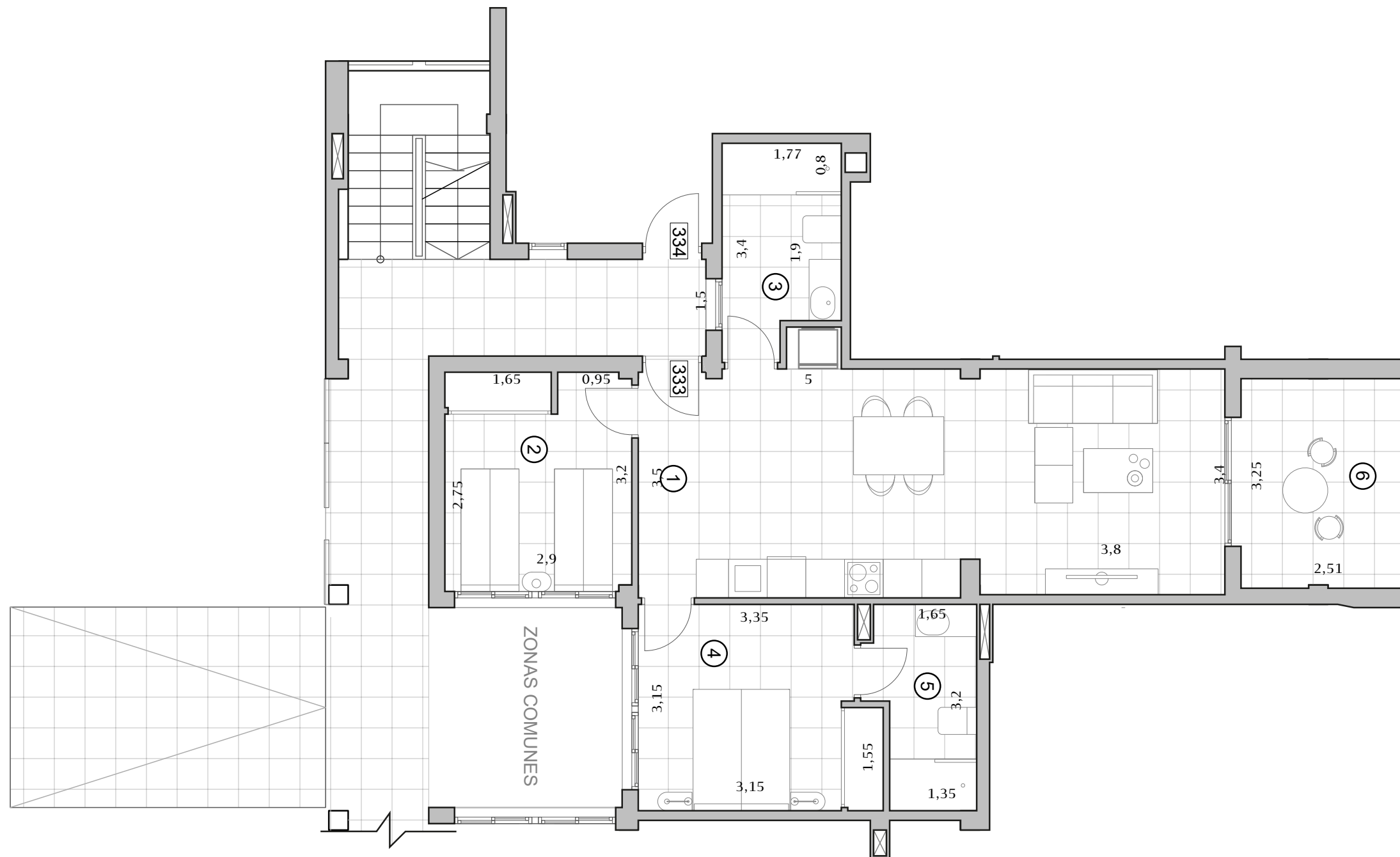


Scale 1:75  
A3



**Ground floor**  
**333**

 2  2



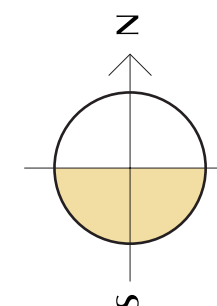
<b>Build</b>	73,87
<b>1 Kitchen-living</b>	32,58
<b>2 Bedroom 2</b>	9,75
<b>3 Bathroom 2</b>	5,67
<b>4 Bedroom 1</b>	11,42
<b>5 Bathroom1</b>	4,87
<b>6 Terrace</b>	8,41

<b>Included</b>	
<b>Parking</b>	18,97
<b>Storage</b>	2,95

All measures are expressed in M2.



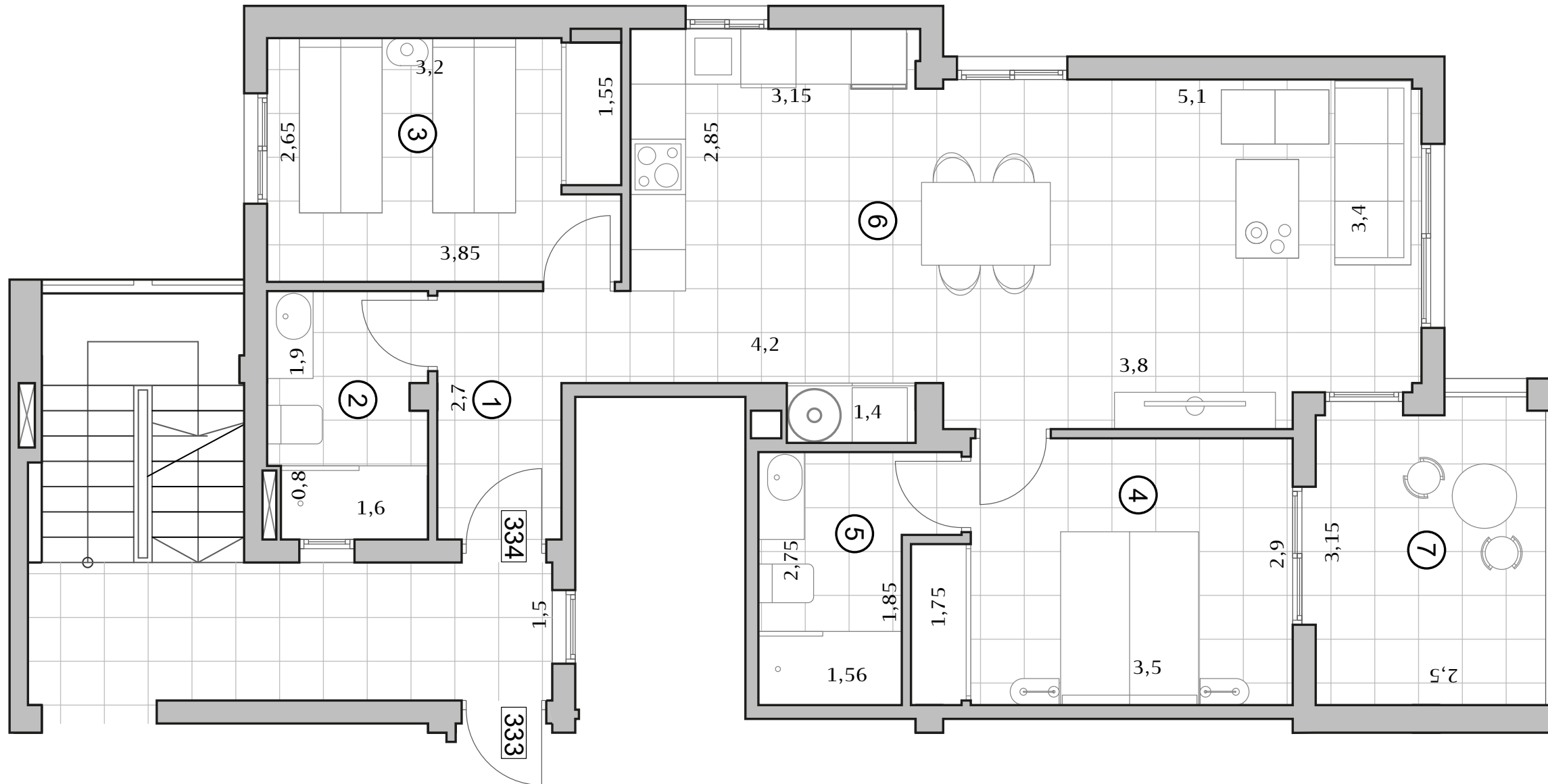
<b>Scale</b>	1:75
	A3





**Ground floor**  
334

 2  2

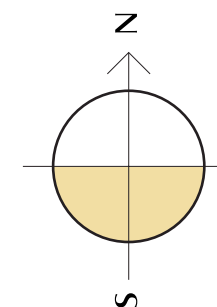
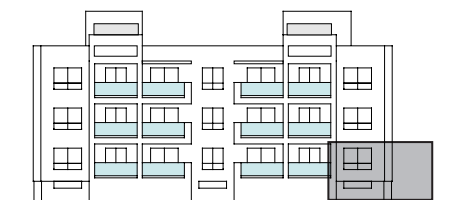


**Build** 79,04

1	Hall	4,62
2	Bathroom 2	4,54
3	Bedroom 2	10,1
4	Bedroom 1	11,28
5	Bathroom1	4,87
6	Kitchen-living	32,1
7	Terrace	8,4

<b>Included</b>		
Parking		18,46
Storage		3,13

All measures are expressed in M2.



**Scale** 1:75  
A3

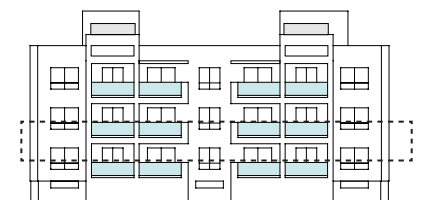
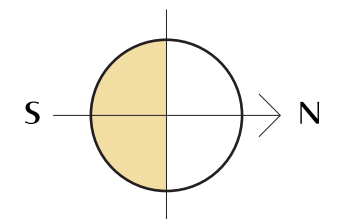
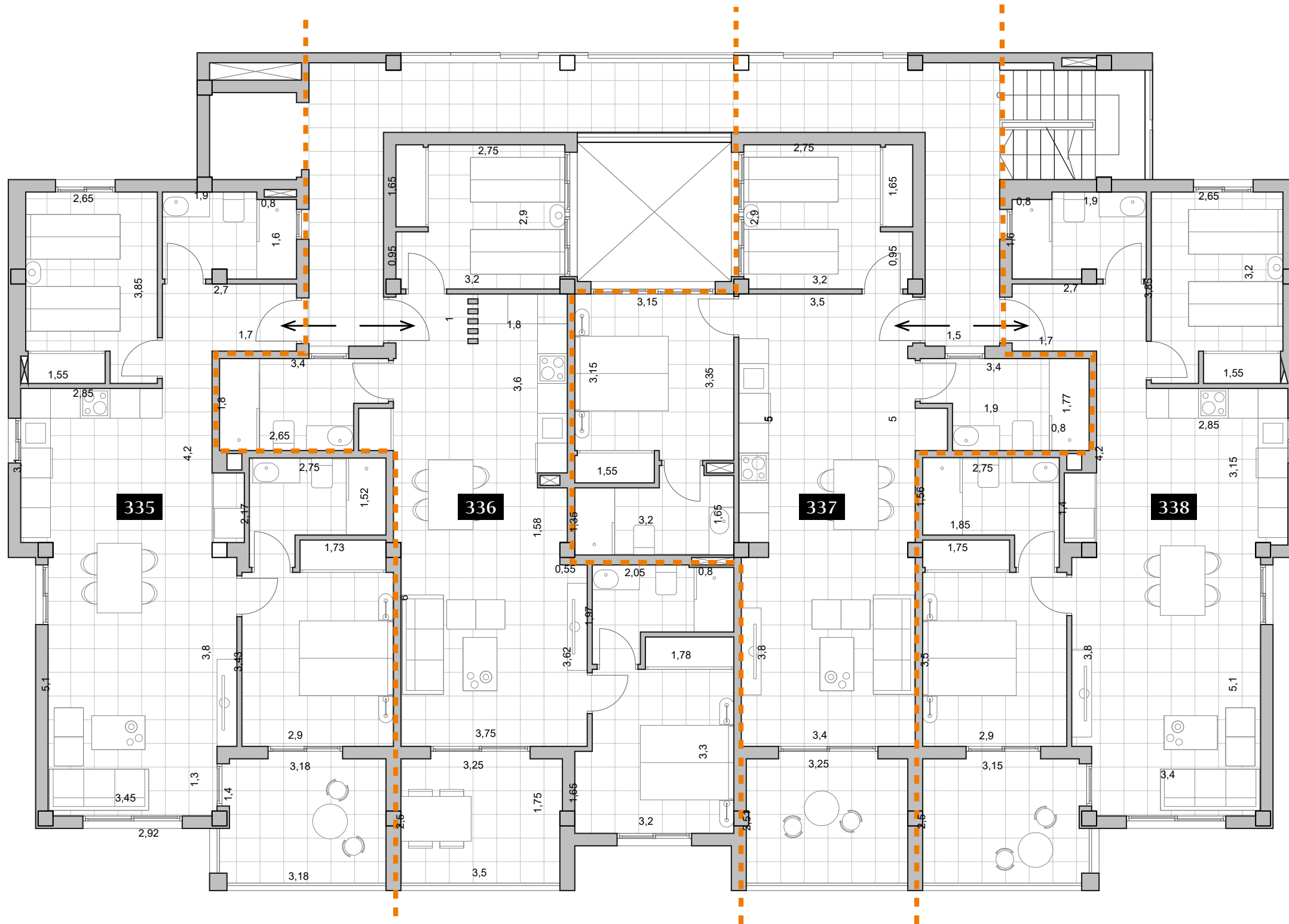


**First floor**  
335-336-337-338

2 2

**First floor**

335	79,67
336	74,27
337	73,87
338	79,04

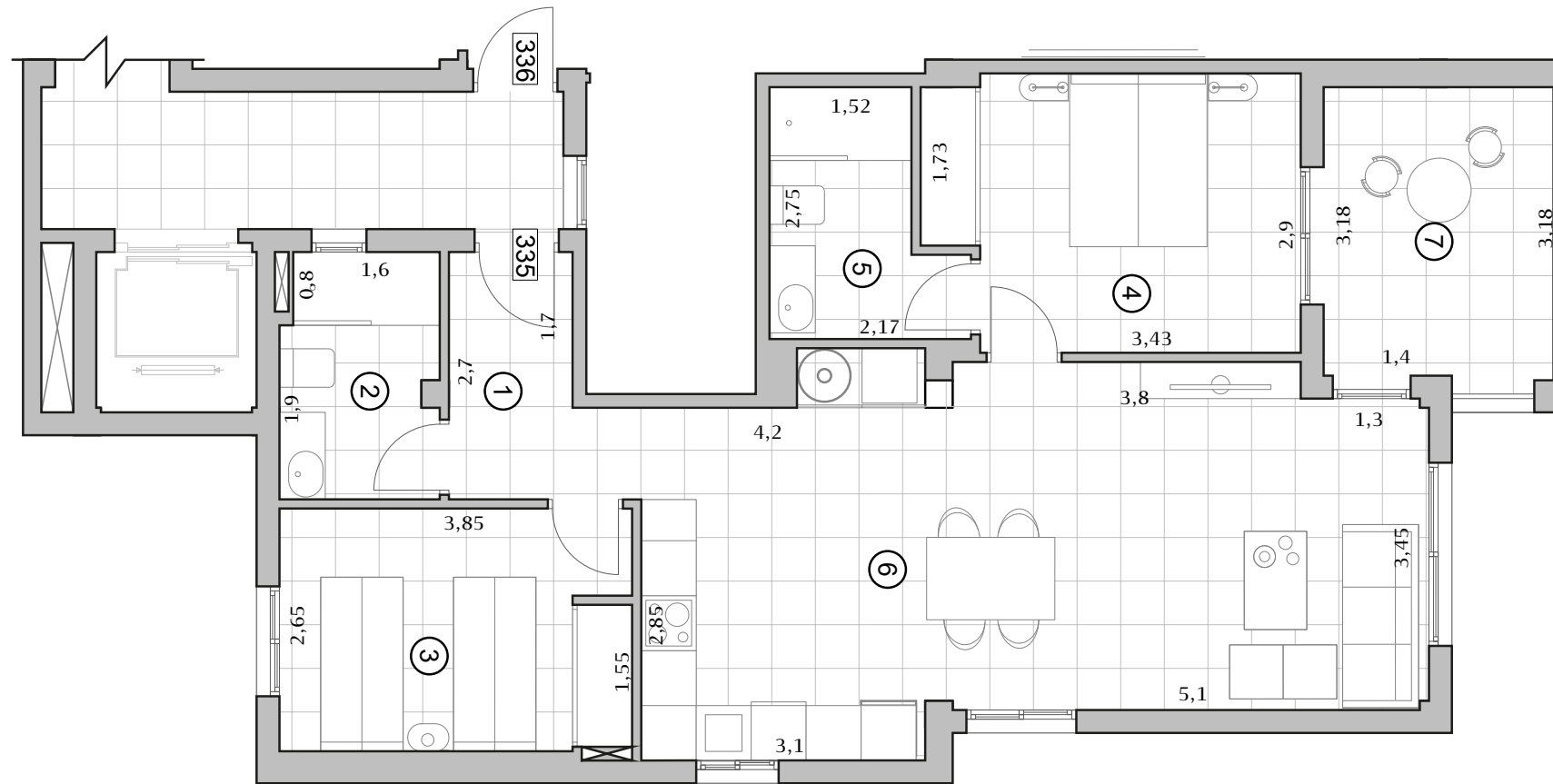


Scale 1:100



**First Floor**  
335

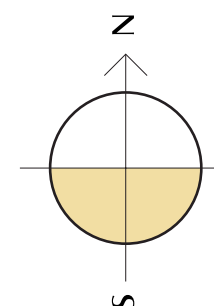
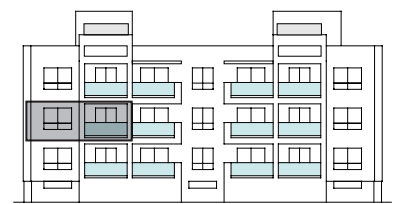
2 2



<b>Build</b>	79,67
<b>1 Hall</b>	4,40
<b>2 Bathroom 2</b>	4,54
<b>3 Bedroom 2</b>	10,20
<b>4 Bedroom 1</b>	11,80
<b>5 Bathroom1</b>	4,86
<b>6 Kitchen-living</b>	32,07
<b>7 Terrace</b>	8,40

<b>Included</b>	
<b>Parking</b>	19,49
<b>Storage</b>	3,14

All measures are expressed in M2.



<b>Scale</b>	1:75
	A3

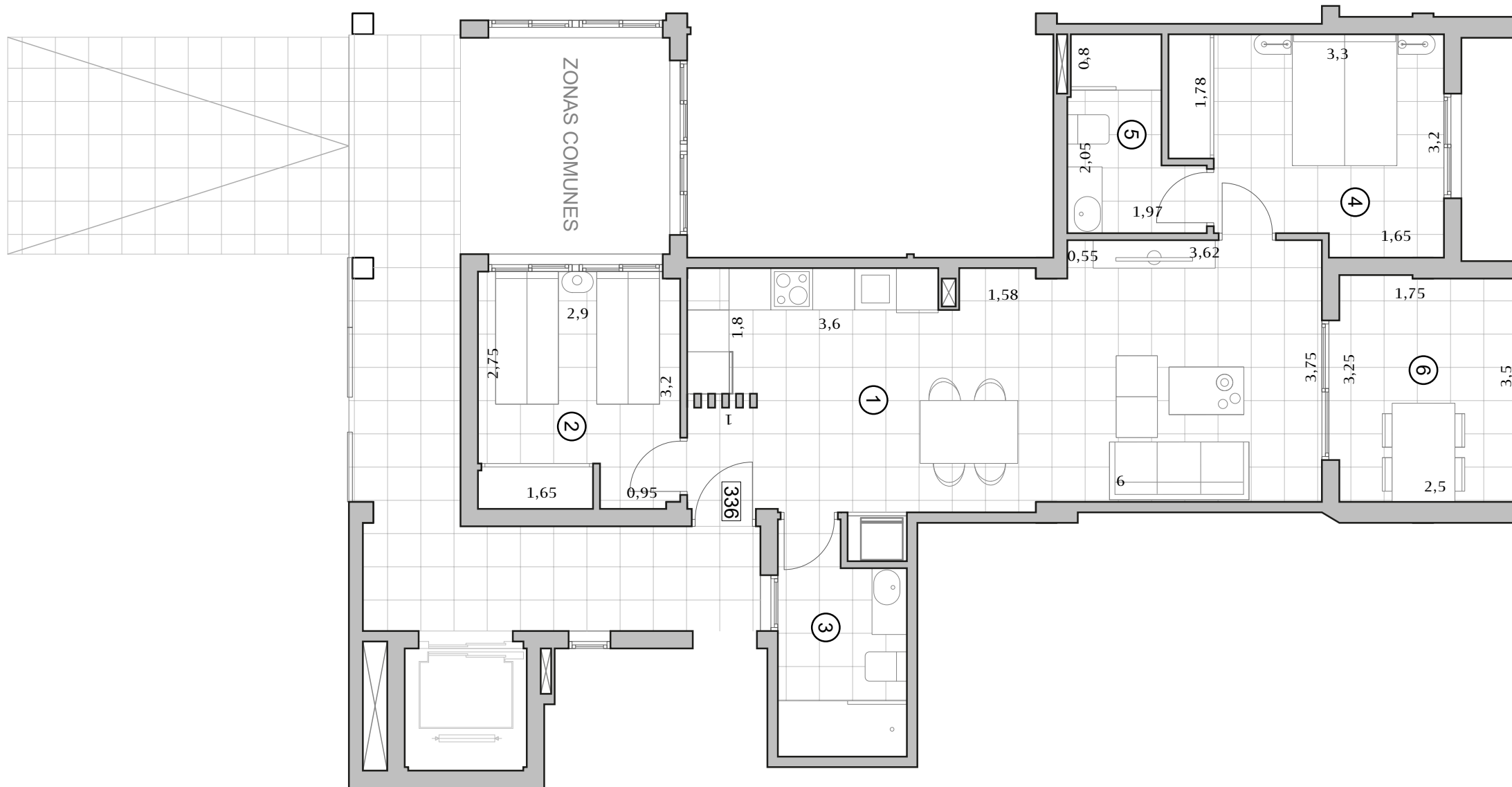


**First Floor**  
**336**

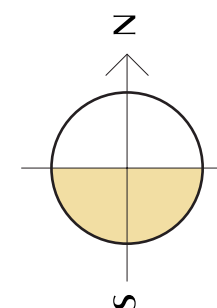
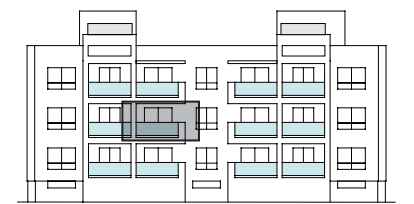
 2  2

Build 74,27

1	Kitchen-living	32,60
2	Bedroom 2	9,75
3	Bathroom 2	5,62
4	Bedroom 1	11,14
5	Bathroom 1	4,43
6	Terrace	8,35



All measures are expressed in M2.

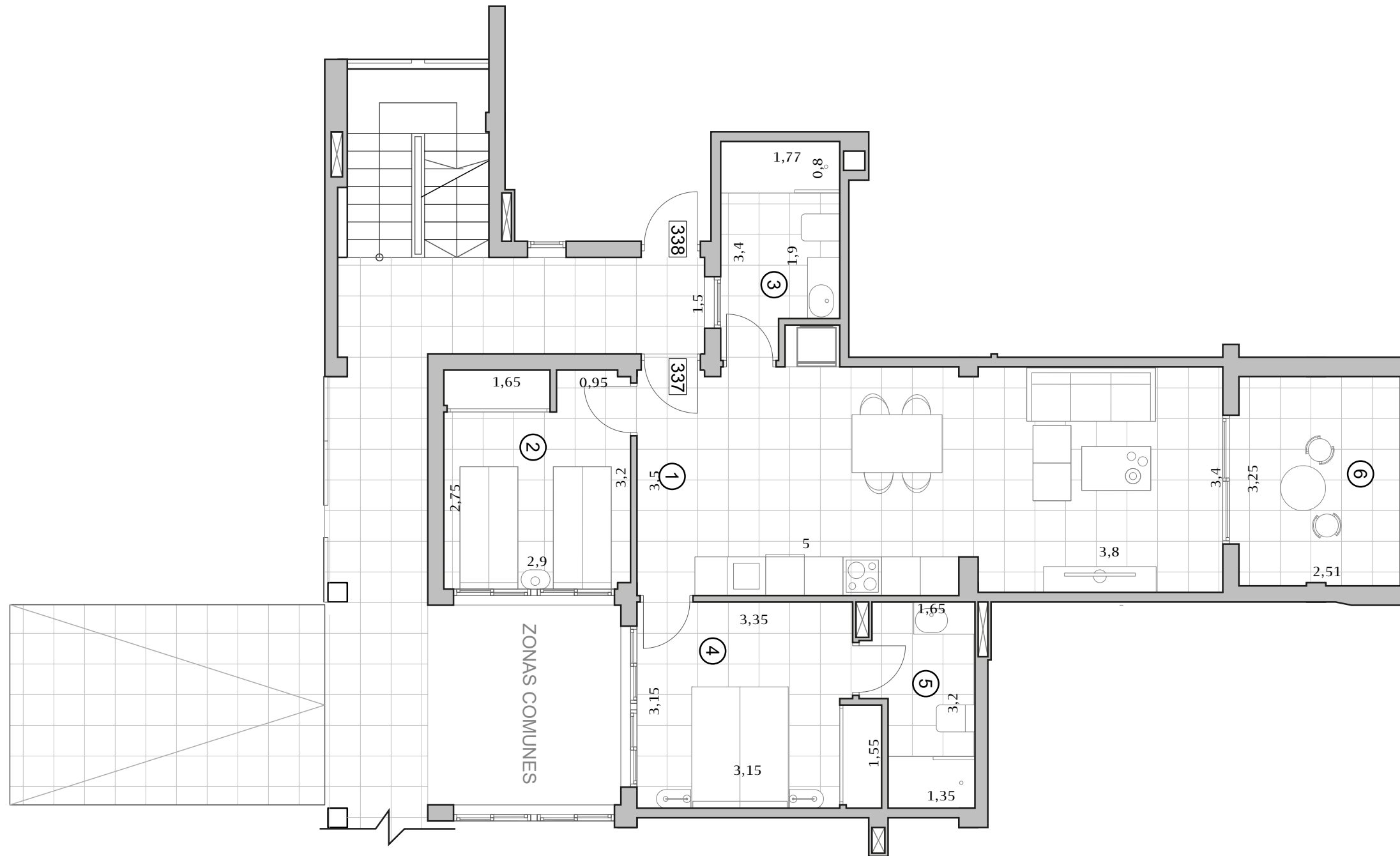


Scale 1:75  
A3



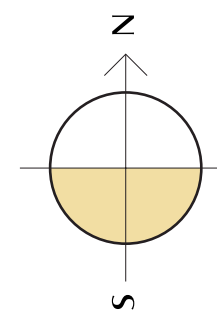
**First Floor**  
**337**

2 2



<b>Build</b>	73,87
<b>1 Kitchen-living</b>	32,58
<b>2 Bedroom 2</b>	9,75
<b>3 Bathroom 2</b>	5,67
<b>4 Bedroom 1</b>	11,42
<b>5 Bathroom1</b>	4,87
<b>6 Terrace</b>	8,41

<b>Included</b>	
<b>Parking</b>	19,24
<b>Storage</b>	2,78

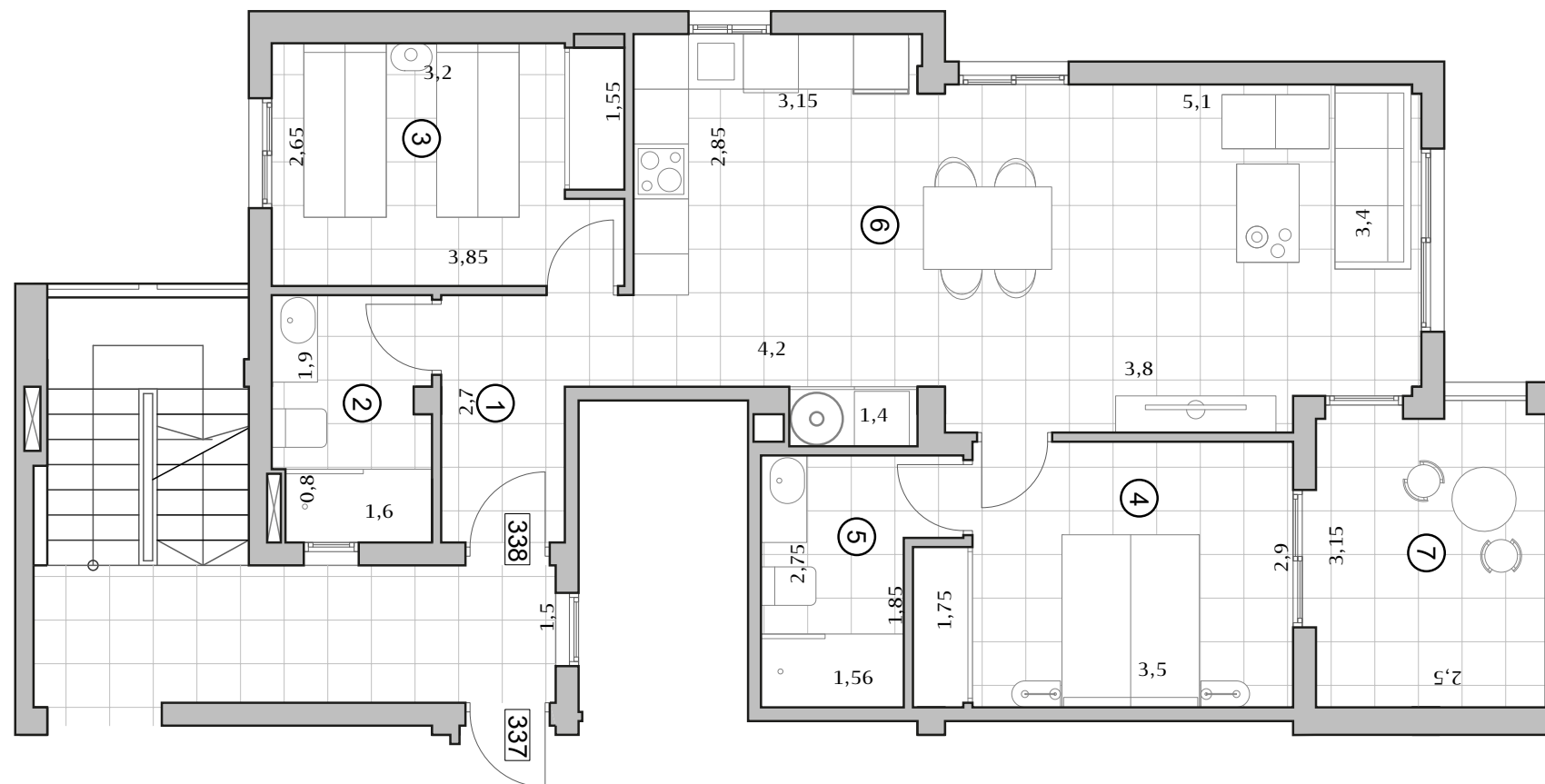


<b>Scale</b>	1:75
	A3



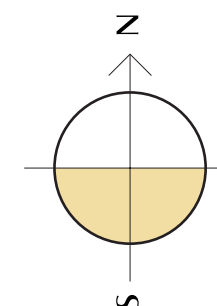
**First Floor**  
**338**

2 2



<b>Build</b>	79,04
<b>1 Hall</b>	4,62
<b>2 Bathroom 2</b>	4,54
<b>3 Bedroom 2</b>	10,1
<b>4 Bedroom 1</b>	11,28
<b>5 Bathroom1</b>	4,87
<b>6 Kitchen-living</b>	32,1
<b>7 Terrace</b>	8,4

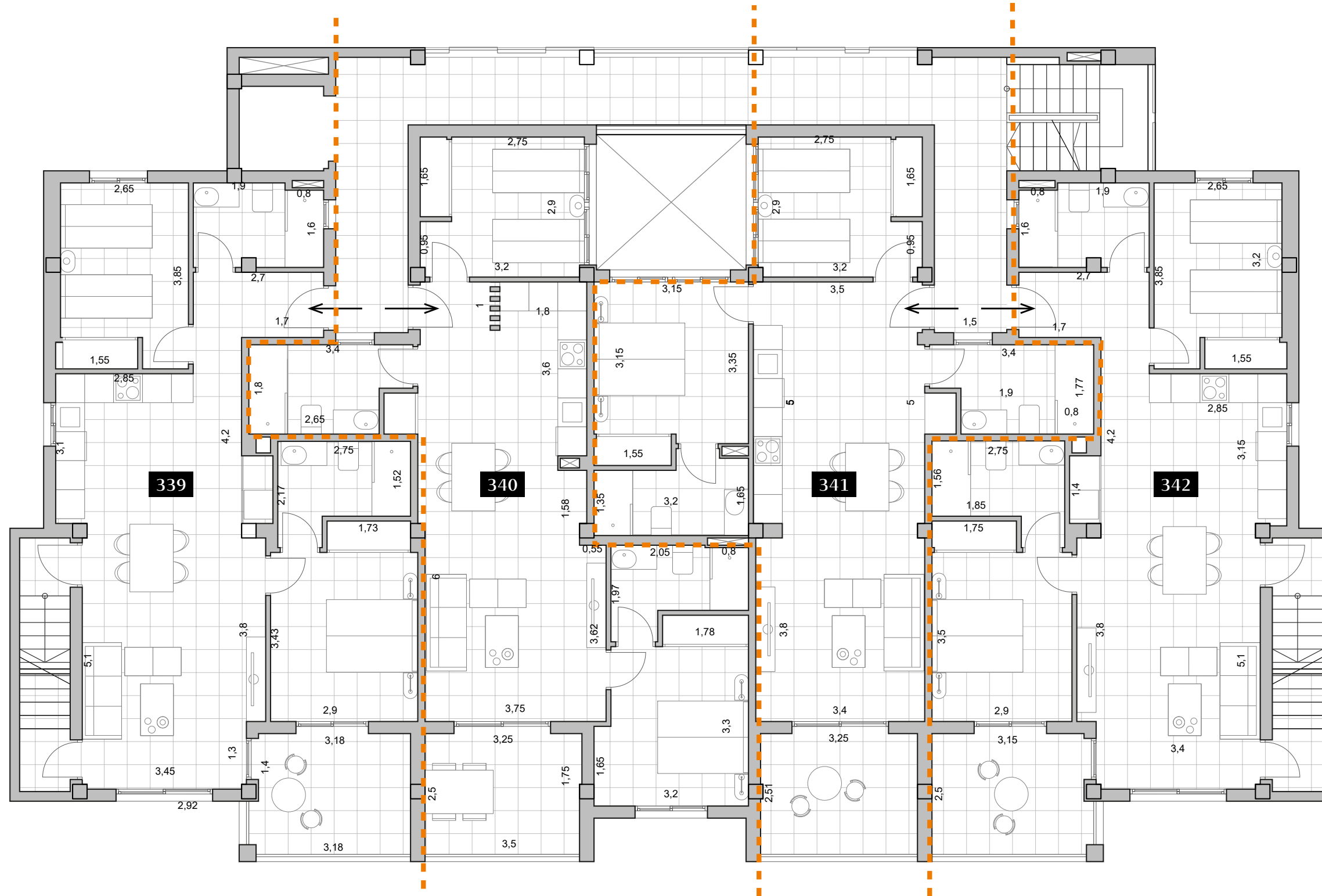
<b>Included</b>	
<b>Parking</b>	19,49
<b>Storage</b>	3,14



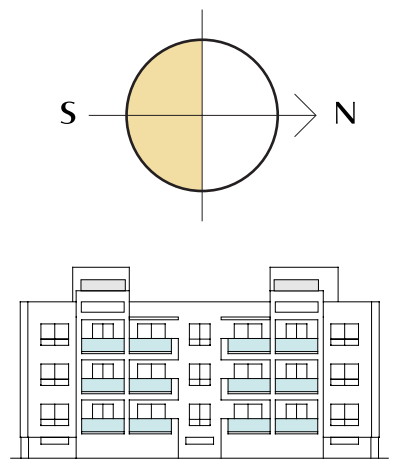
<b>Scale</b>	1:75
	A3



**Penthouses**  
339-340-341-342



Penthouse	
339	79,67
340	74,27
341	73,87
342	79,04



Scale 1:100  
A3



**Penthouse**  
**339**

2 2

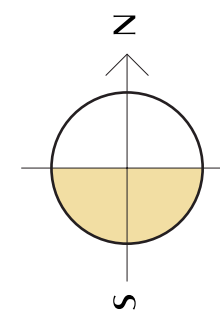
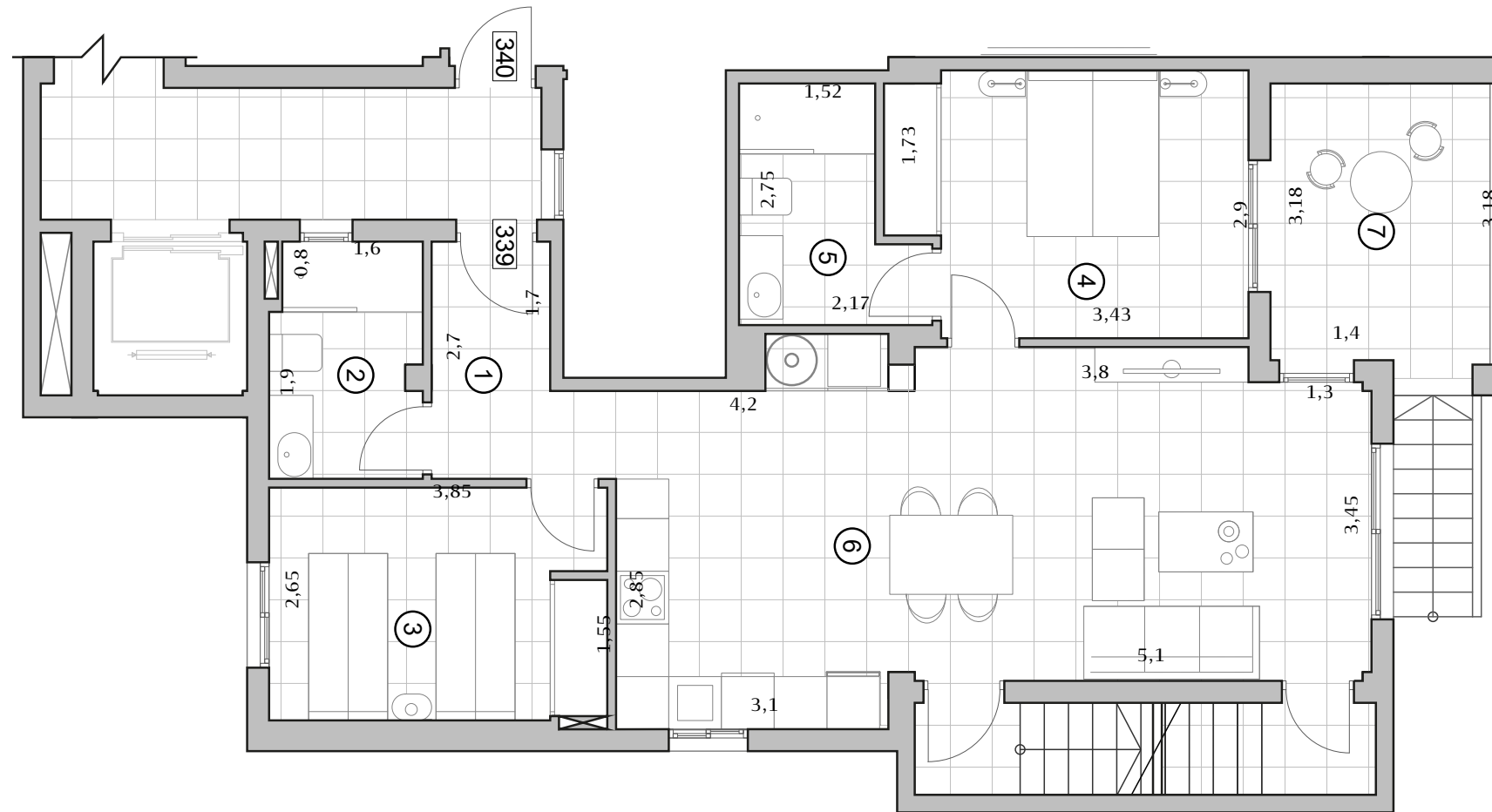
**Build** 79,67

**339**

1	Hall	4,40
2	Bathroom 2	4,54
3	Bedroom 2	10,20
4	Bedroom 1	11,80
5	Bathroom1	4,86
6	Kitchen-living	32,07
7	Terrace	8,40

**Included**

Parking	19,10
Storage	3,89
Solarium	95,39



Scale 1:75  
A3

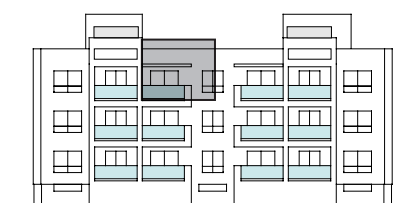
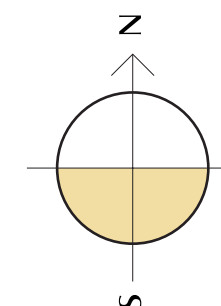
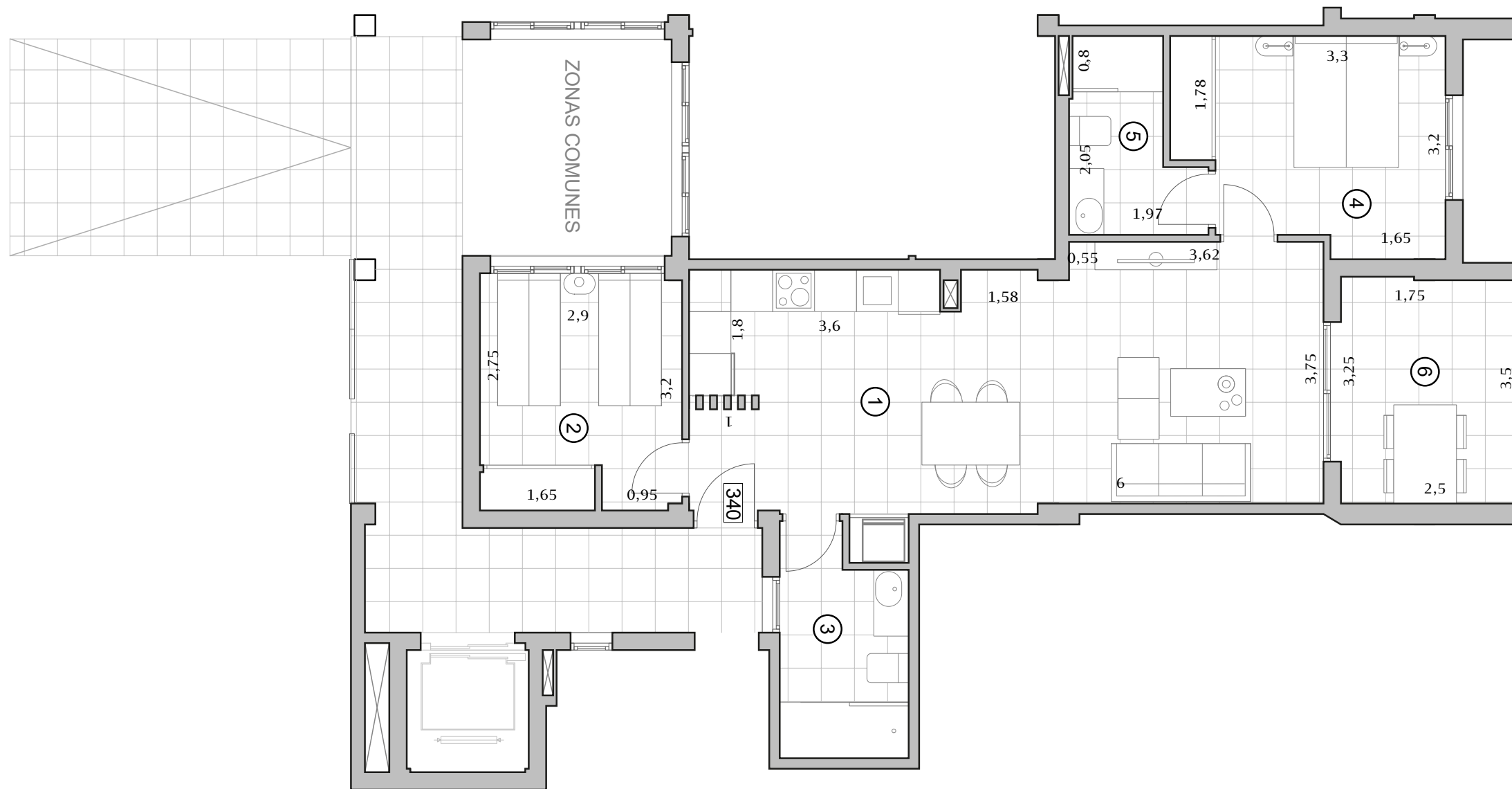


**Penthouse 340**

🏠 2 🏠 2

<b>Build</b>	74,27
<b>1 Kitchen-living</b>	32,60
<b>2 Bedroom 2</b>	9,75
<b>3 Bathroom 2</b>	5,62
<b>4 Bedroom 1</b>	11,14
<b>5 Bathroom1</b>	4,43
<b>6 Terrace</b>	8,35

<b>Included</b>	
<b>Parking</b>	18,97
<b>Storage</b>	3,89
<b>Solarium</b>	65,26



Scale 1:75  
A3

**Penthouse 341**

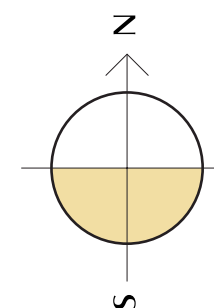
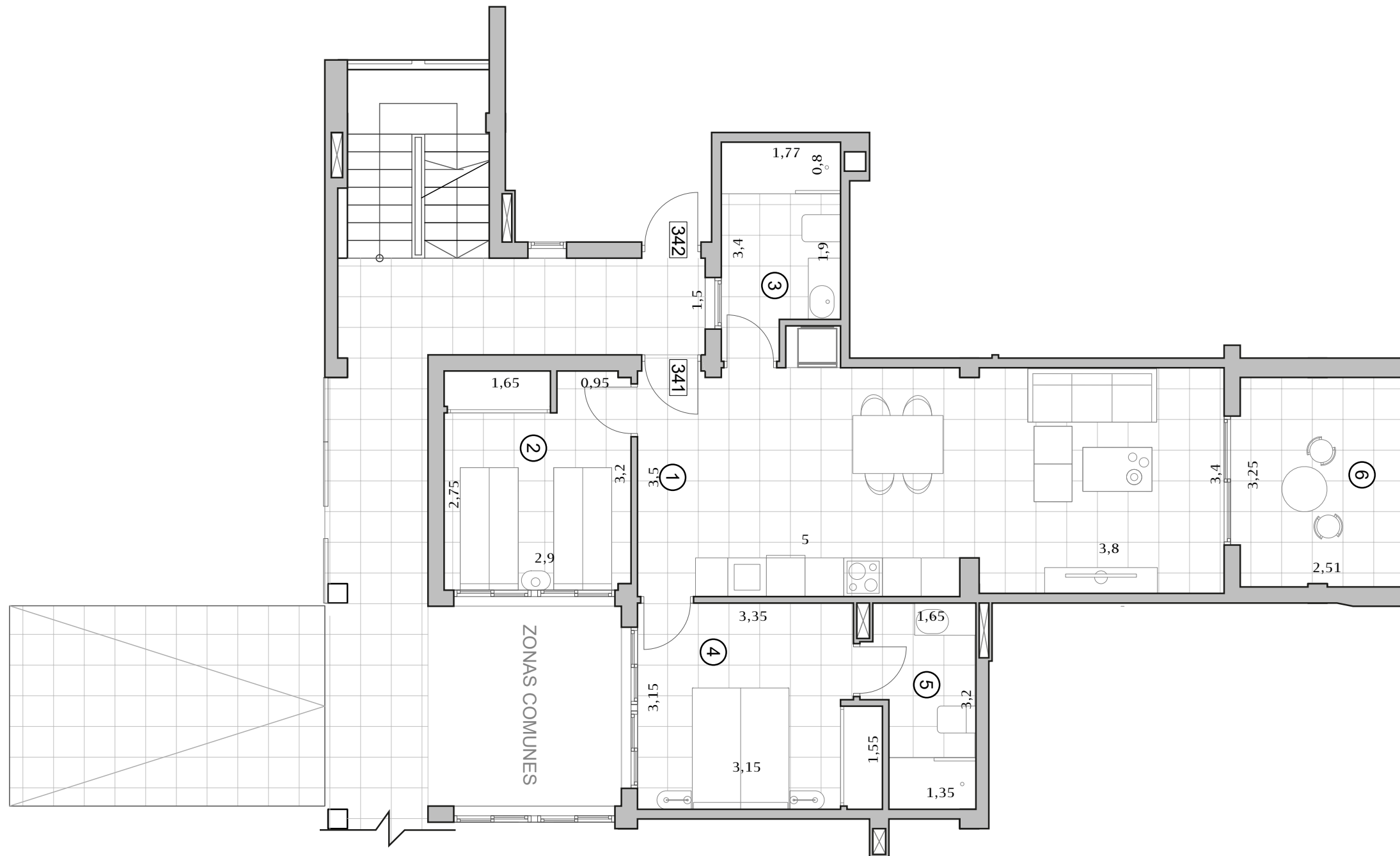
 2  2

**Build** 73,87

1	Kitchen-living	32,60
2	Bedroom 2	9,75
3	Bathroom 2	5,62
4	Bedroom 1	11,14
5	Bathroom1	4,43
6	Terrace	8,35

**Included**

Parking	19,10
Storage	3,89
Solarium	63,62



Scale 1:75  
A3



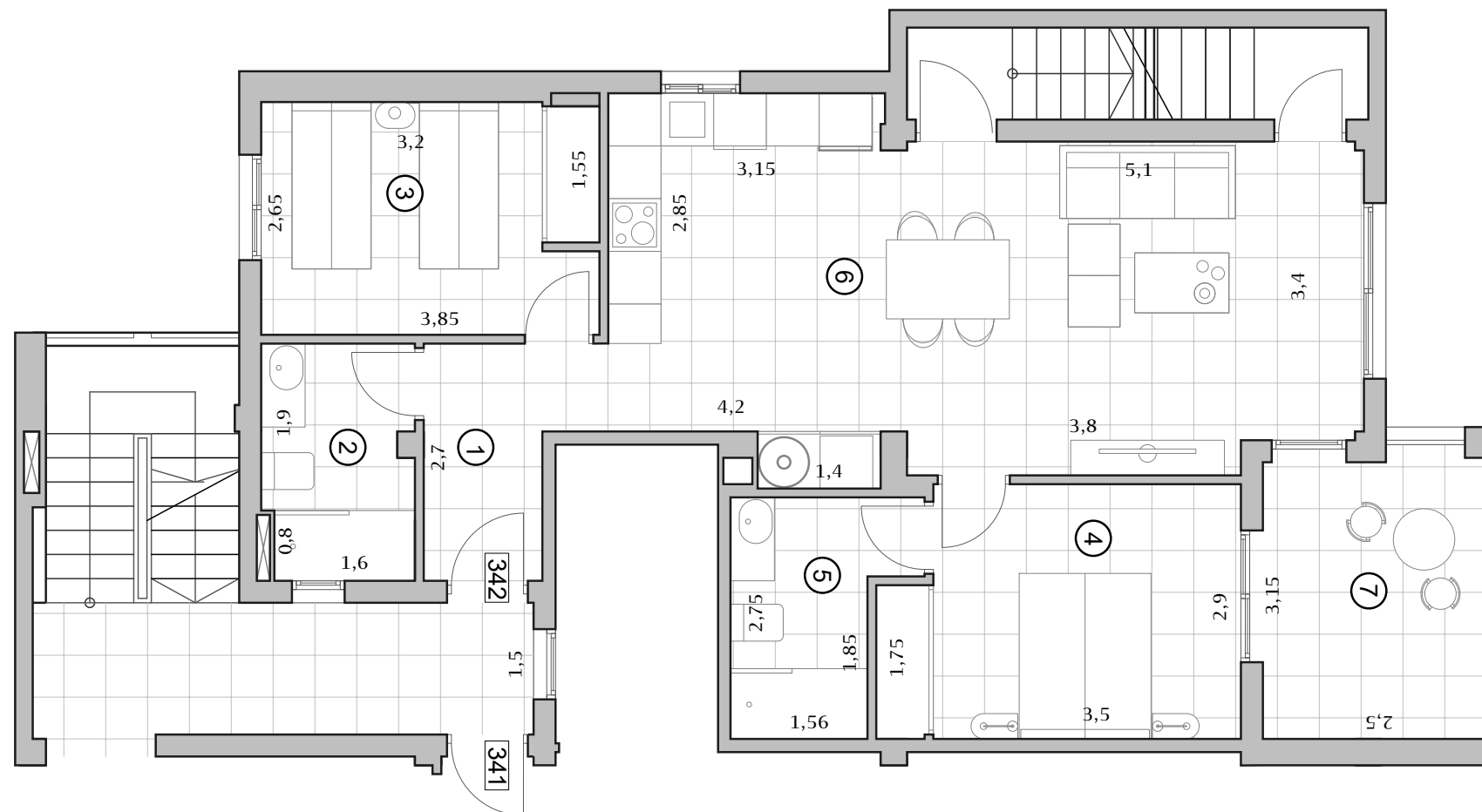
**Penthouse**  
**342**

 2  2

**Build** 79,04

**342**

1	Hall	4,40
2	Bathroom 2	4,54
3	Bedroom 2	10,20
4	Bedroom 1	11,80
5	Bathroom1	4,86
6	Kitchen-living	32,07
7	Terrace	8,40

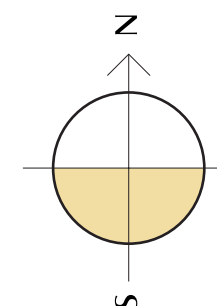


**Included**

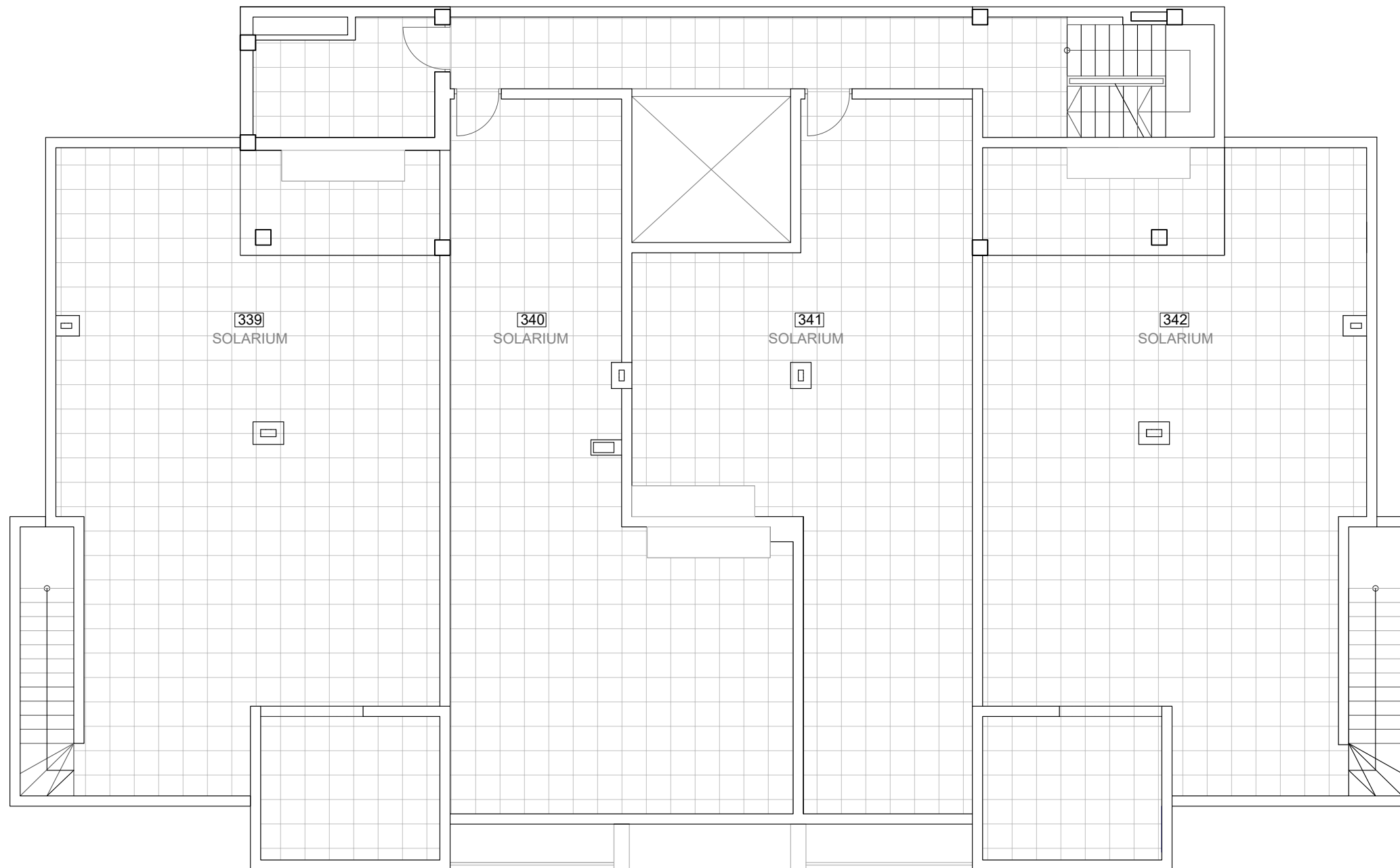
Parking	19,09
Storage	3,89
Solarium	95,58



Scale 1:75  
A3

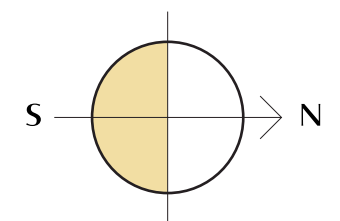


**Solarium**



**Surfaces**

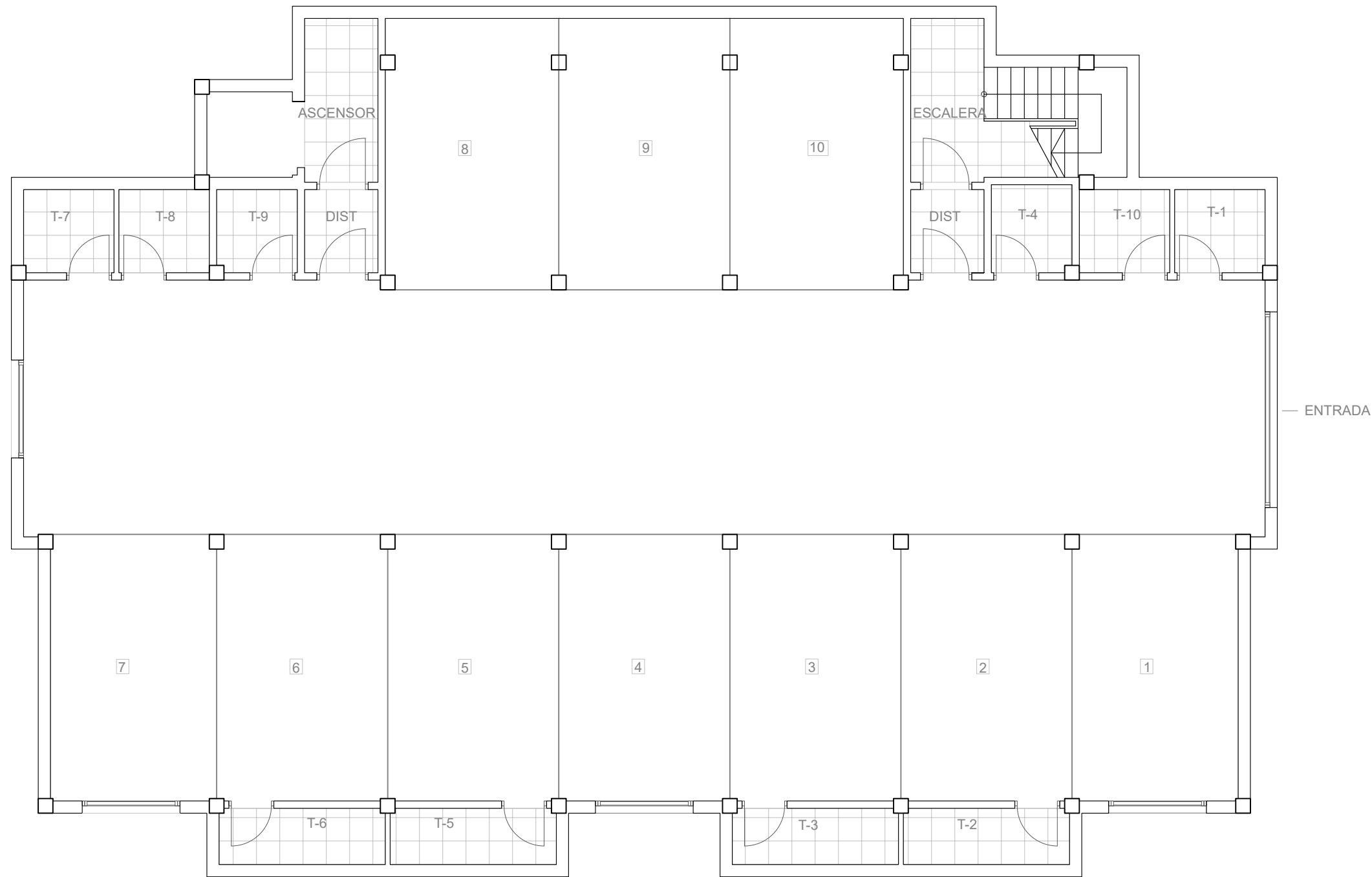
339	95,39
340	65,26
341	65,26
342	95,39



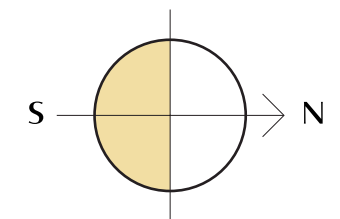
Scale	1:100
	A3



Underground



Home	Parking	Storage	S.Surface
331	1	T1	3,13
332	--	--	--
333	4	T4	2,95
334	7	T7	3,13
335	8	T8	3,14
336	--	--	--
337	9	T9	2,78
338	10	T10	3,14
339	2	T2	3,89
340	3	T3	3,89
341	5	T5	3,89
342	6	T6	3,89



Scale | 1:100  
A3

# Specifications



## Bathrooms

The bathrooms include general tiling white (30X60) completed with the wall Stardust Cotto y Stardust Teal (13,5 x 13,5). Porcelain floor tiles Metropol Zen Grey.

In both bathrooms, mixer taps will be installed on white sinks and toilets with a current design. White resin shower tray, sliding aluminum screen and mixer taps.

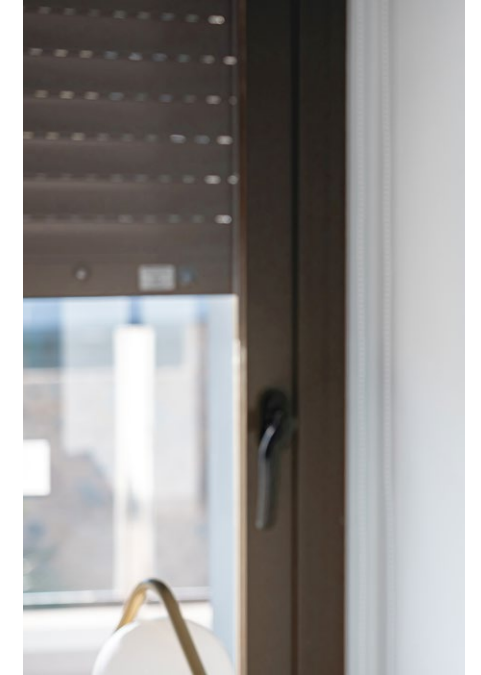
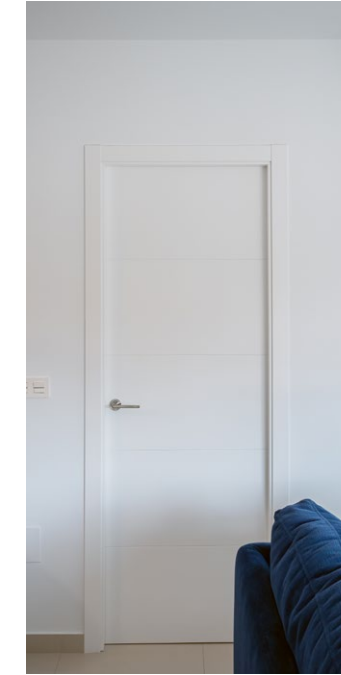
The white suspended bathroom unit with adjustable support in height and depth with anti-tip system.



## Kitchen

Charming and practical space with a combination of natural oak and white glossy melamine furniture. Elegant worktop & backsplash Blanco Luna model.

Filtering unit. Kitchen sink with high spout faucet.



## Windows and sliding doors

Brown aluminum carpentry with electric blinds of the same material and colour in all rooms, tilt and turn system in bathrooms with manual shutters.

The built-in wardrobes are finished with white smooth sliding doors. Completed with brown sliding windows with electric shutters of the same material and colour.

The restrooms have tilt and turn windows system with manual shutters.

## Doors

Main entrance armoured security door fitted with exterior in brown and white interior panel.

White lacquered interior doors with stainless steel square handlers.

Built in wardrobes with sliding white doors and soft closing system.



# Specifications



## Interior Flooring

Top quality 75x75 porcelain tiles interior flooring.

## Exterior flooring

Porches, terraces and solarium with 75x75 C3 porcelain stoneware.

## Solarium (penthouses)

The penthouses include pre-installation of a kitchen: water supply, faucet, drainage, and socket.

## Exterior flooring

Porches, terraces and solarium with 75x75 C3 porcelain stoneware.

## Domotic home system



The homes are equipped with electrical and telecommunications outlets required by the Low Voltage Electrotechnical Regulations.

Intercom for communication between the home and the main entrance.

Home automation system: blind control, alarm, lighting control (living room and kitchen).

Legrand Valena Next series mechanisms that can be connected to the home automation system.

## Additional qualities

-  Pre-installation of central hot and cold air conditioning.
-  Fully fitted alarm system with one sensor by room, touch panel and siren.



#### PATRIMI SALES OFFICE

Calle Fausto, 8 Orihuela Costa  
(Alicante) - info@patrimi.com

#### Patrimi Resorts

Patrimi Resorts is a real estate developer with over 10 years in the market, specializing in the development of projects in golf and beach environments for international clients. With a youthful and innovative spirit, it originates from the Quara Real Estate Group, a company that led the real estate sector and the residential tourism industry for 40 years, representing a guarantee of experience for the team currently comprising Patrimi Resort.

Patrimi Resort has released over 60 developments for sale in Algorfa, Villamartín and Finestrat, and for 2023, it will conclude with 3 new developments, all on its own land and with its own resources.

This company, based in Orihuela, is part of Patrimi Group, a conglomerate of companies from various sectors, pioneering in the south of Alicante in the development of promotions and real estate, tourist and agricultural exploitation, and with a growing presence in the fashion industry.

For more information:

[www.patrimi.com](http://www.patrimi.com)





**PATRIMI**  
BUILDING YOUR TIME

[www.patrimi.com](http://www.patrimi.com)