

**SUN BEACH LA TORRE**  
TORRE DE LA HORADADA – COSTA BLANCA

**EXCLUSIVE  
VILLAS**

- 4 beds
- Private garden & pool
- Individual garaje





PLAYA DEL CONDE



PLAYA DEL JESUITAS



PLAYA DEL PUERTO



400 m





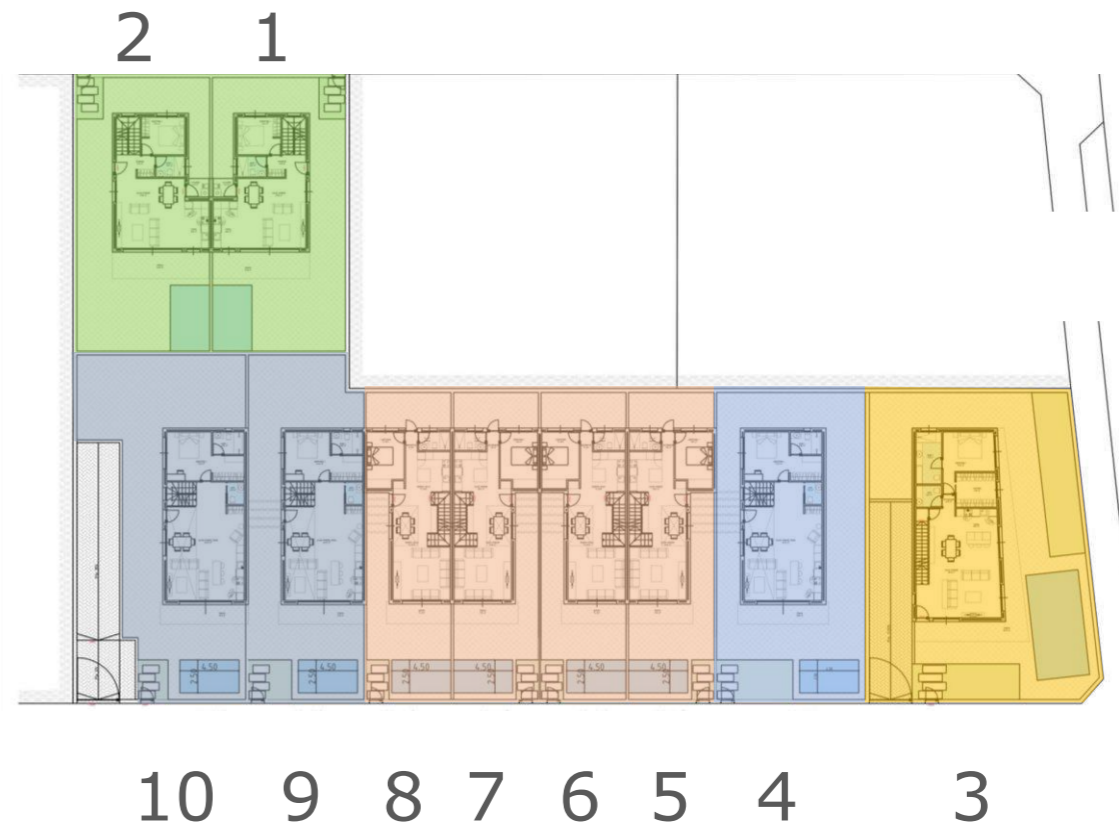
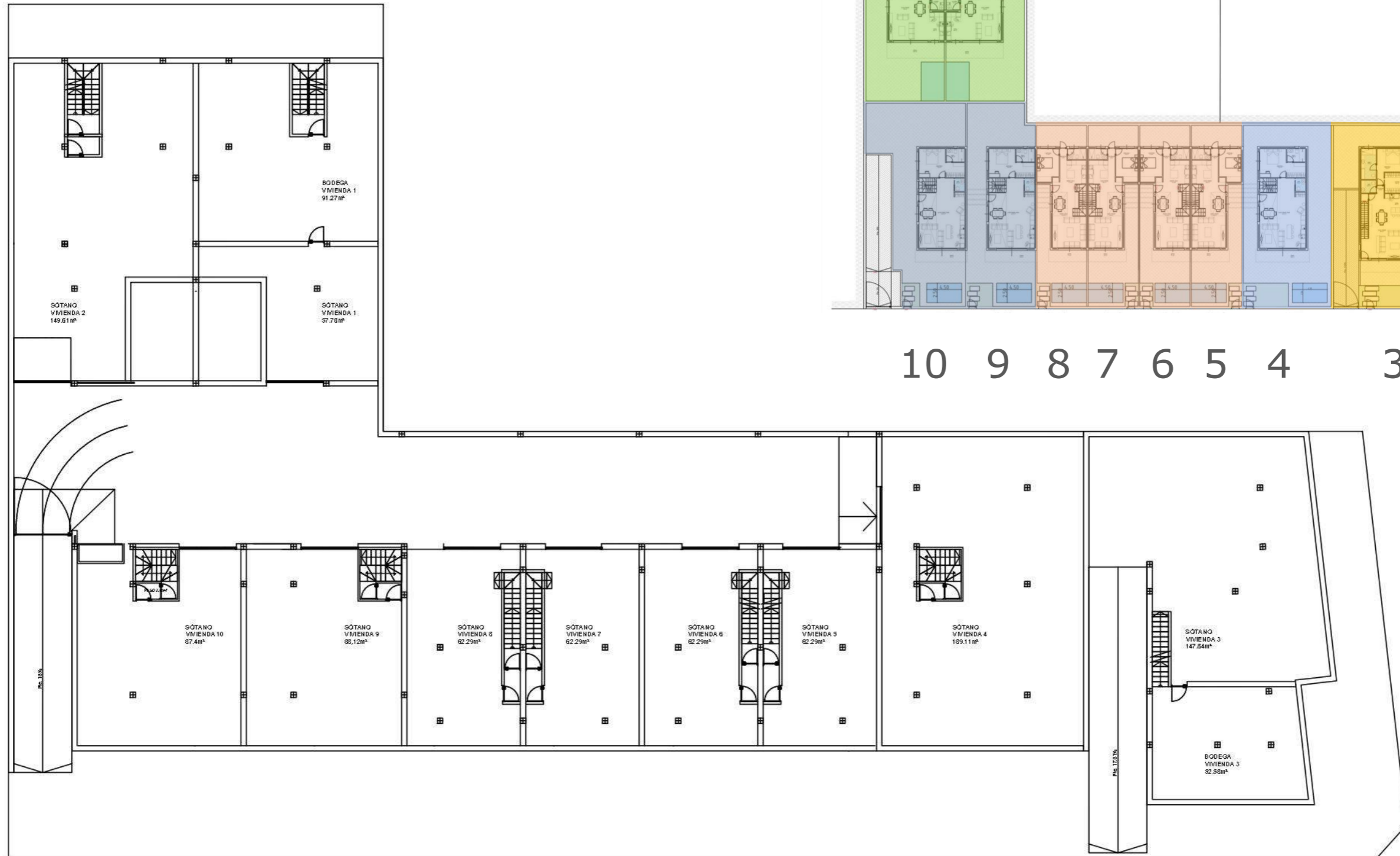
## The Surrounding Area

- Plaza Nueva
  - Beaches
  - Park Antonio Gálvez
  - Supermarket
  - Marina
  - Golf course
- Alicante airport 50km
  - Murcia airport 30km
  - Lo Romero 7,5km
  - Campoamor 12km
  - Las Ramblas 13km
  - Colinas 14km







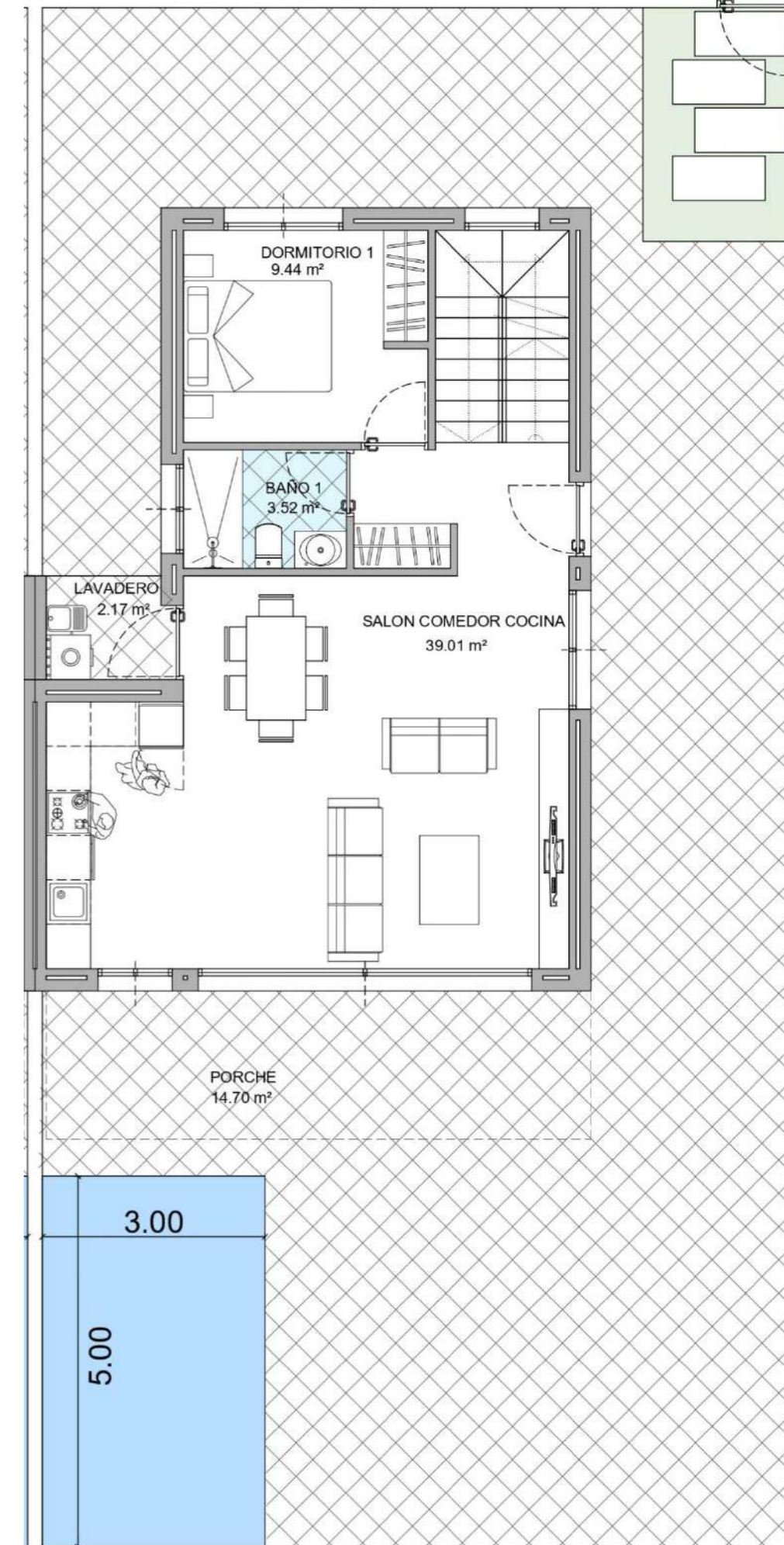
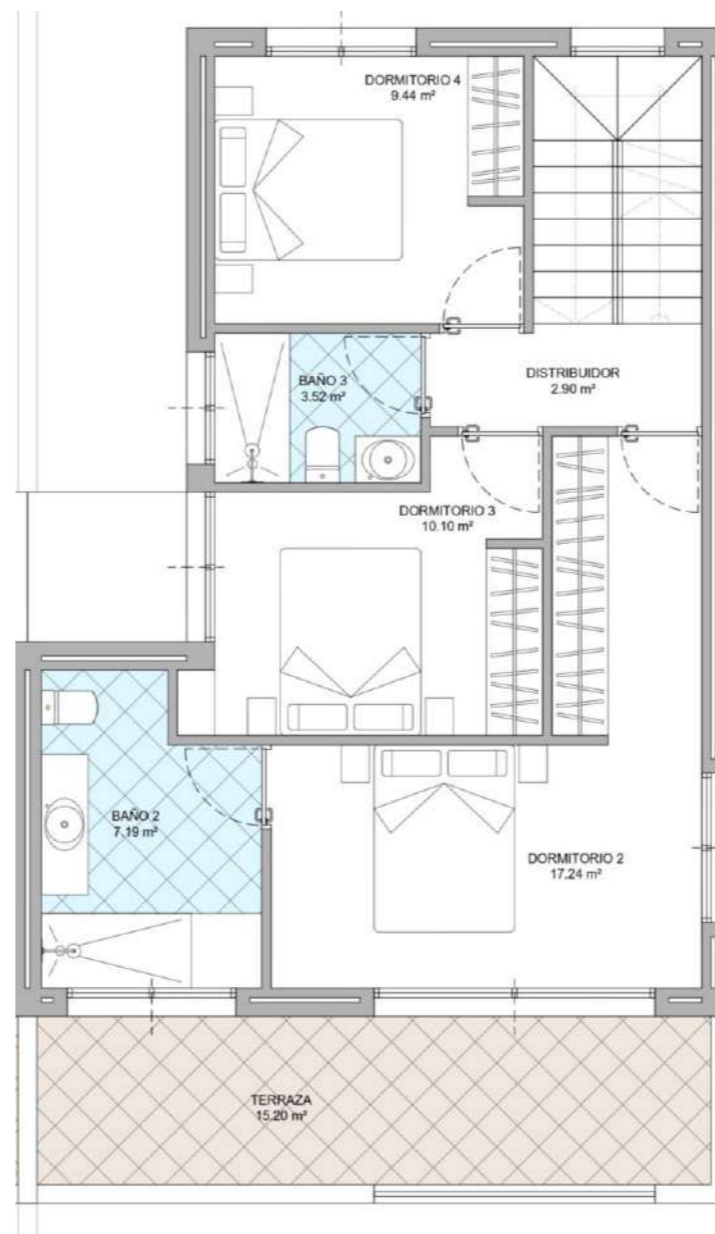
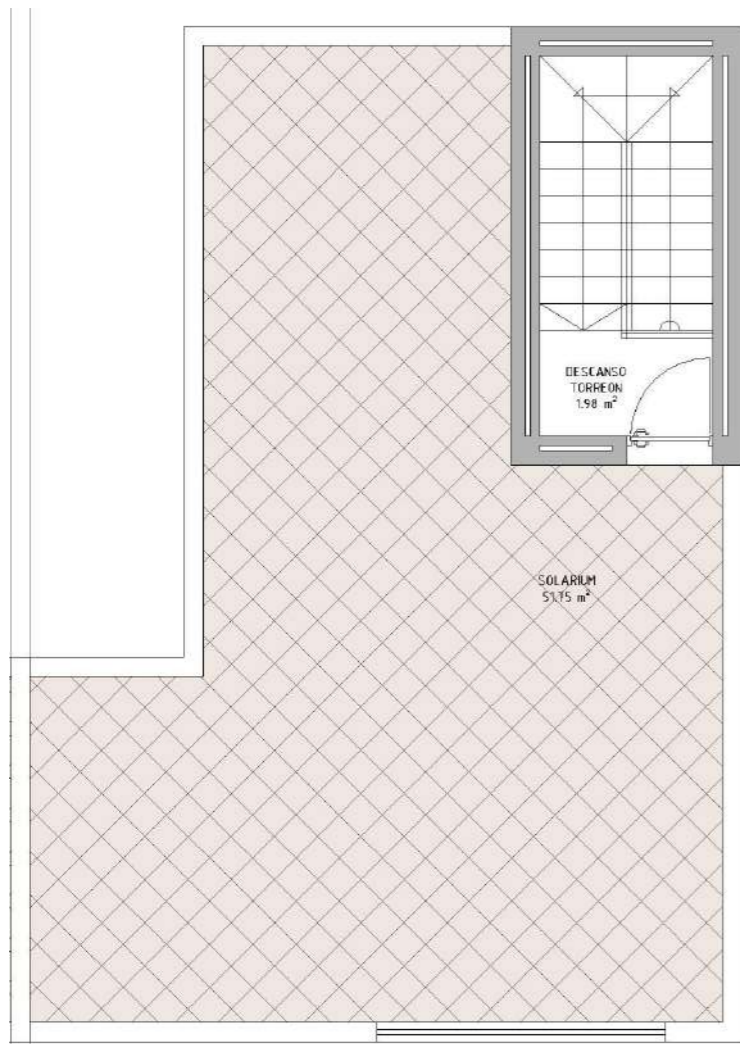






6 Villa model A





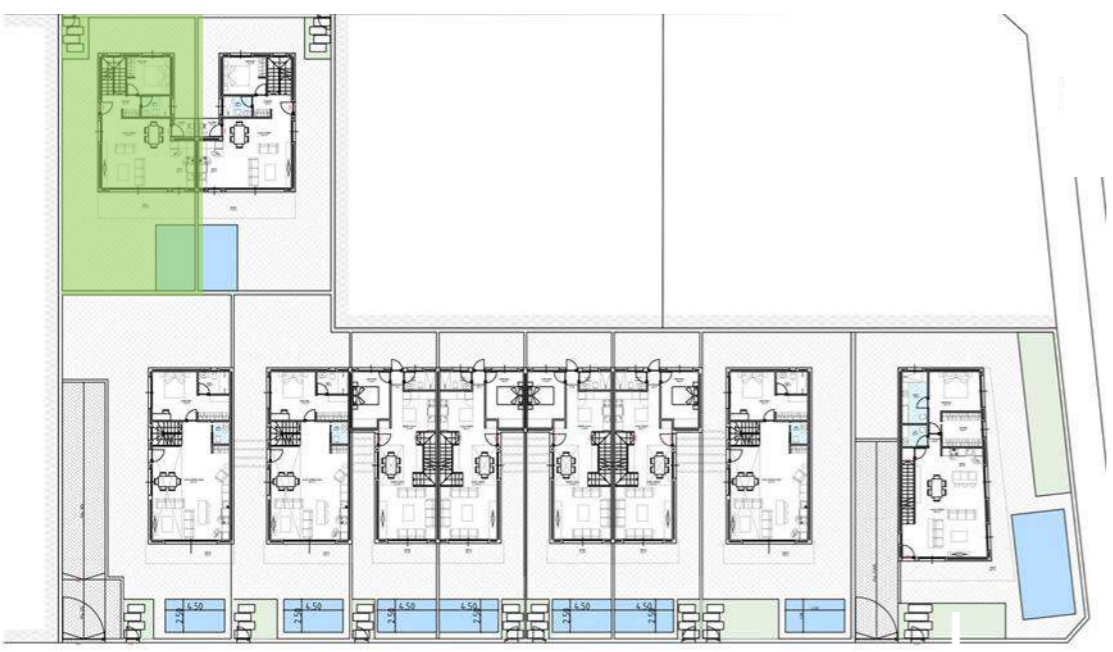
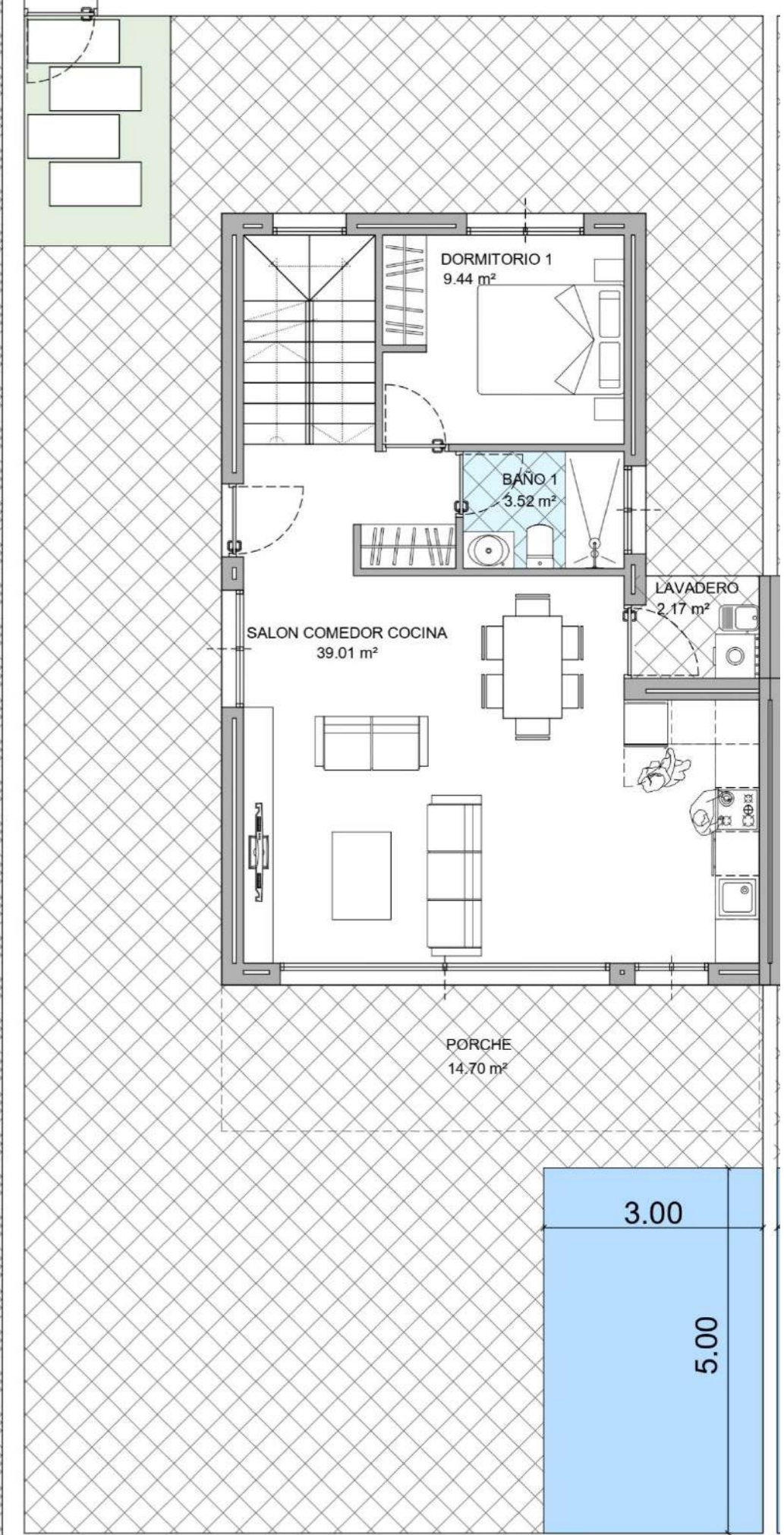
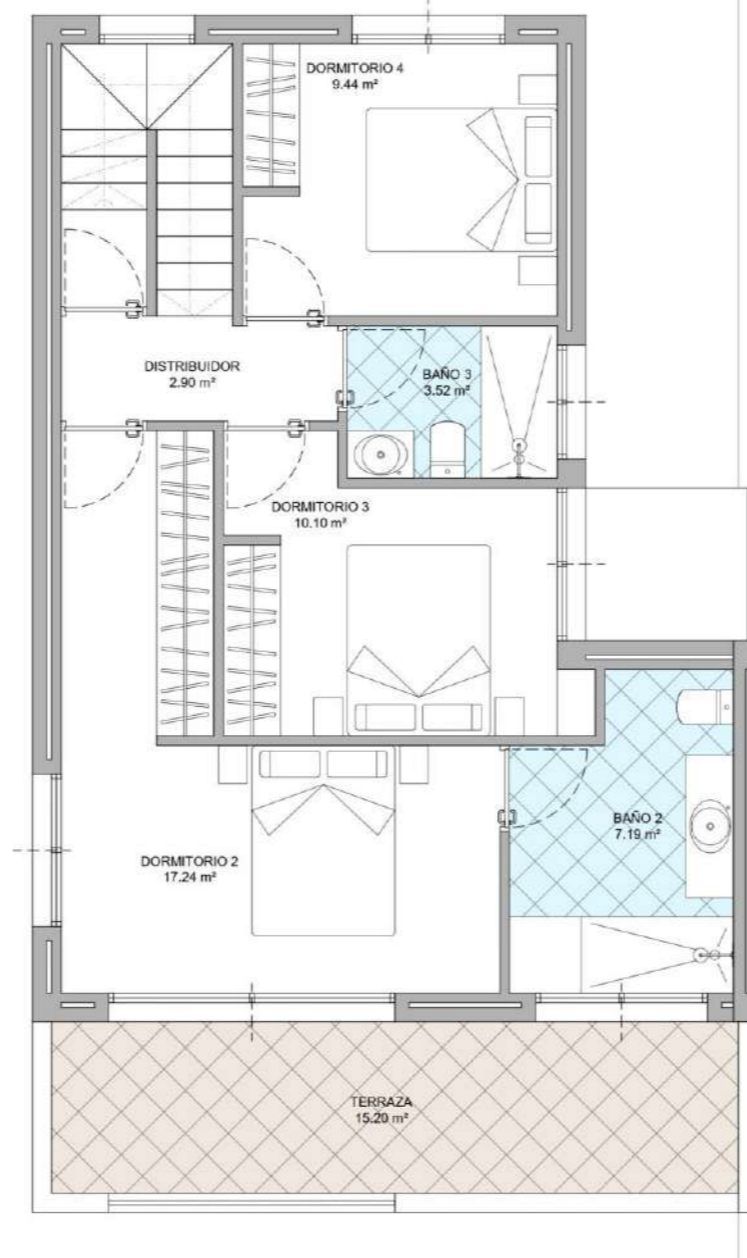
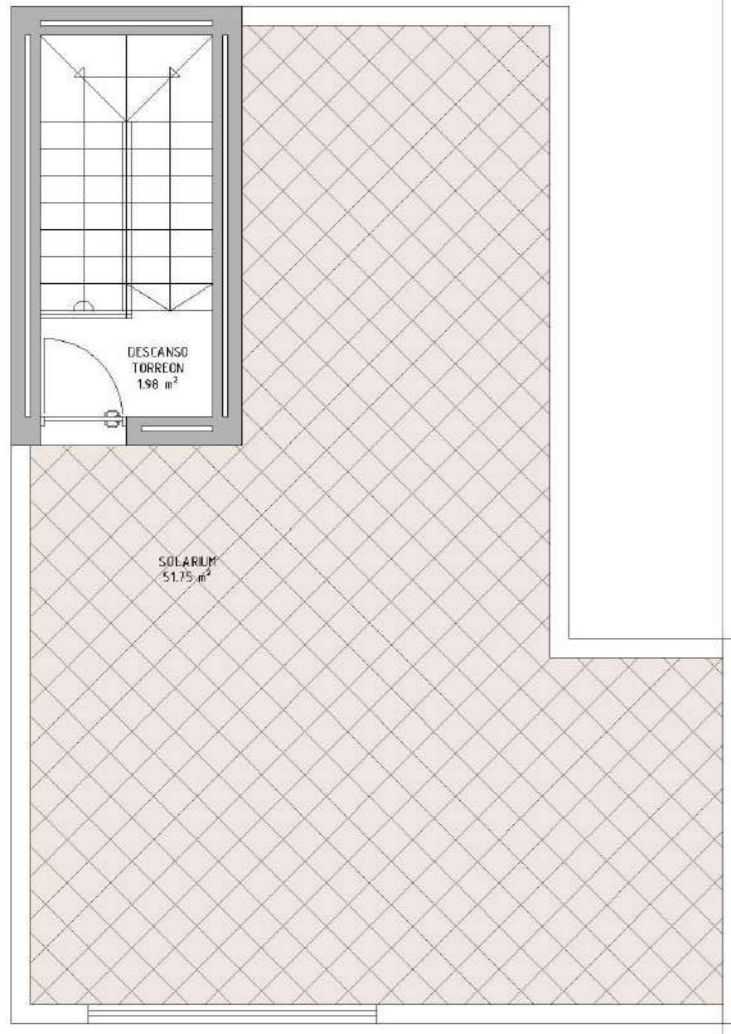
Plot 220m<sup>2</sup>

Villa

- 147m<sup>2</sup> house
- 176m<sup>2</sup> basement
- 51,70m<sup>2</sup> solarium

Villa 1 model A<sup>7</sup>





8 Plot 220m<sup>2</sup>

Villa

- 147m<sup>2</sup> house
- 176m<sup>2</sup> basement
- 51,70m<sup>2</sup> solarium

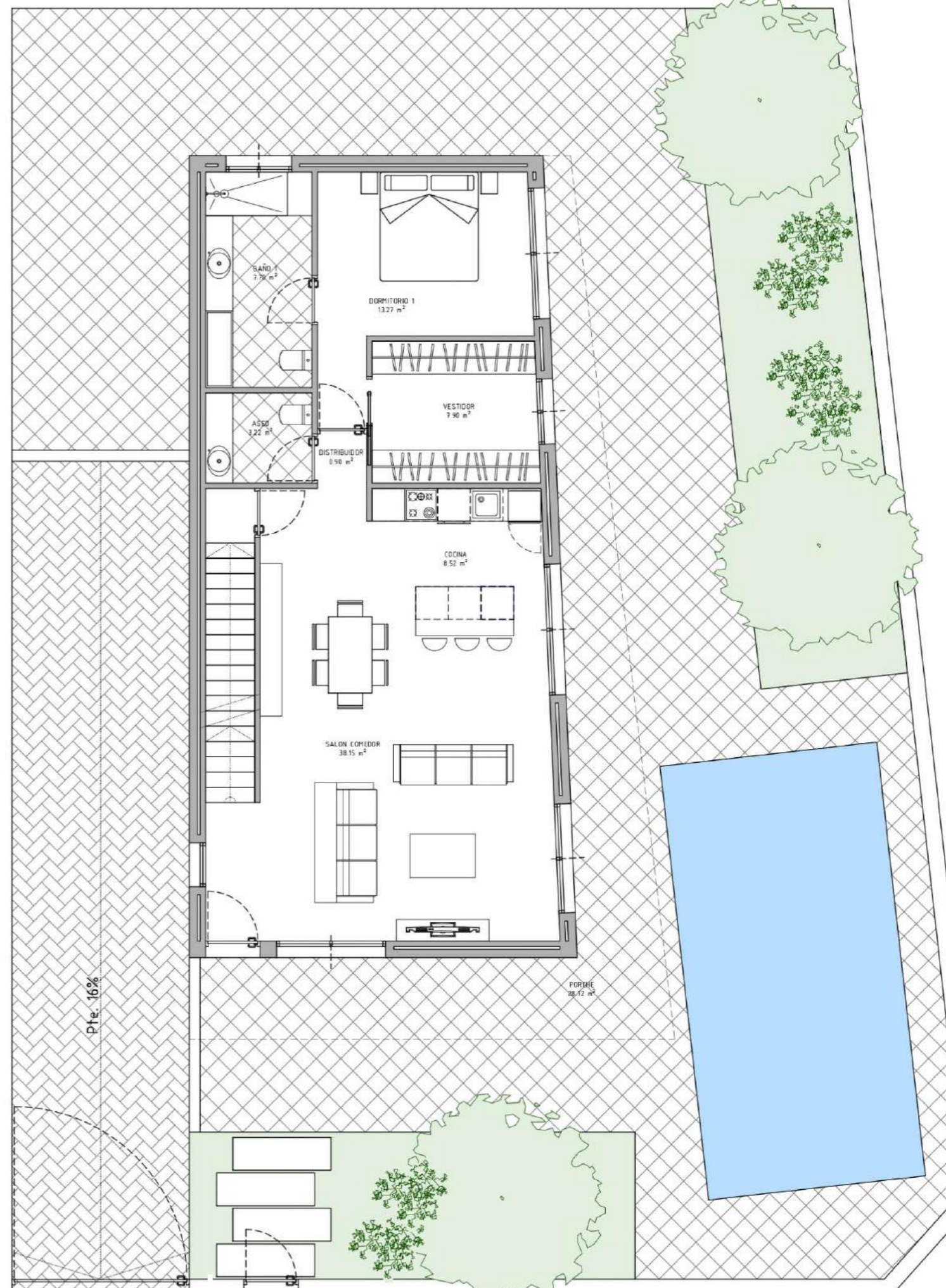
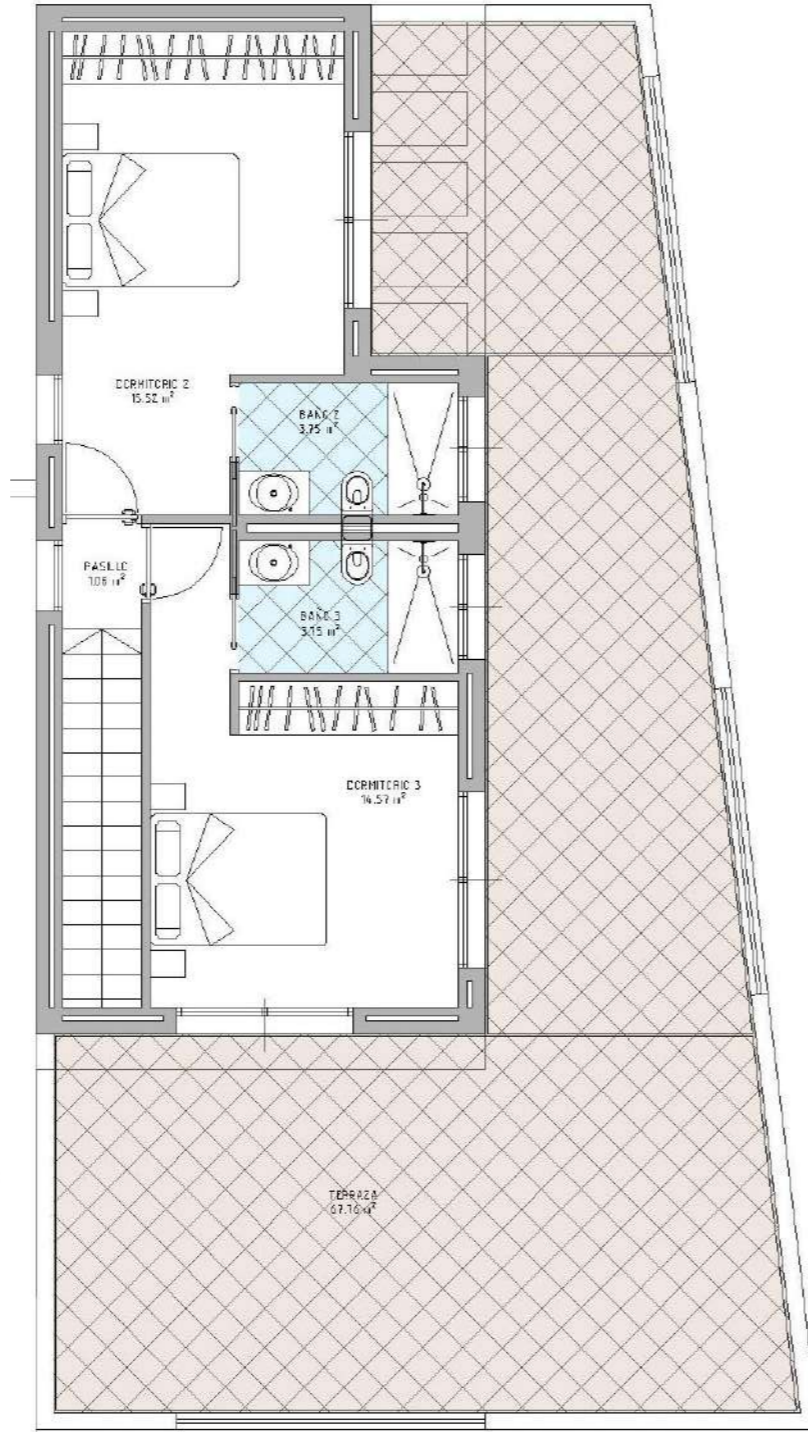
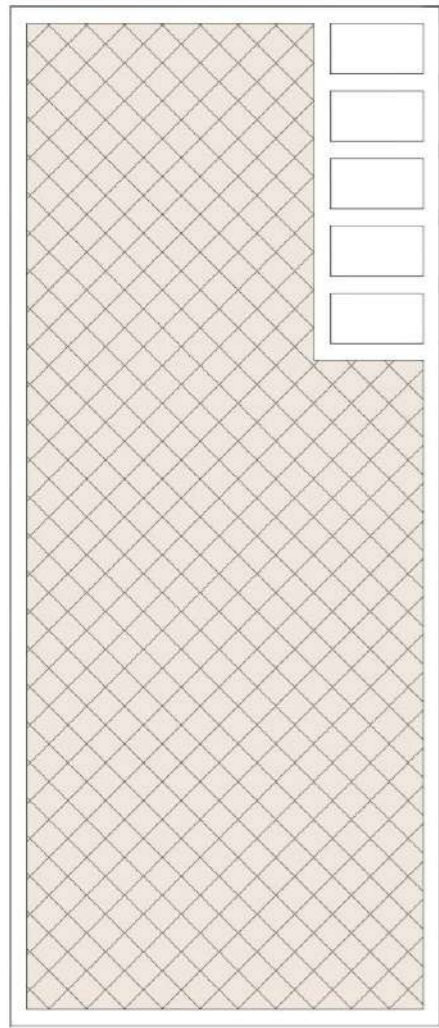
Villa 2 model A





Villa model A<sup>9</sup>





10 Plot 400m<sup>2</sup>

Villa - 164,54m<sup>2</sup> house  
 - 225,82m<sup>2</sup> basement  
 - 67,76m<sup>2</sup> solarium

Villa 3 model B









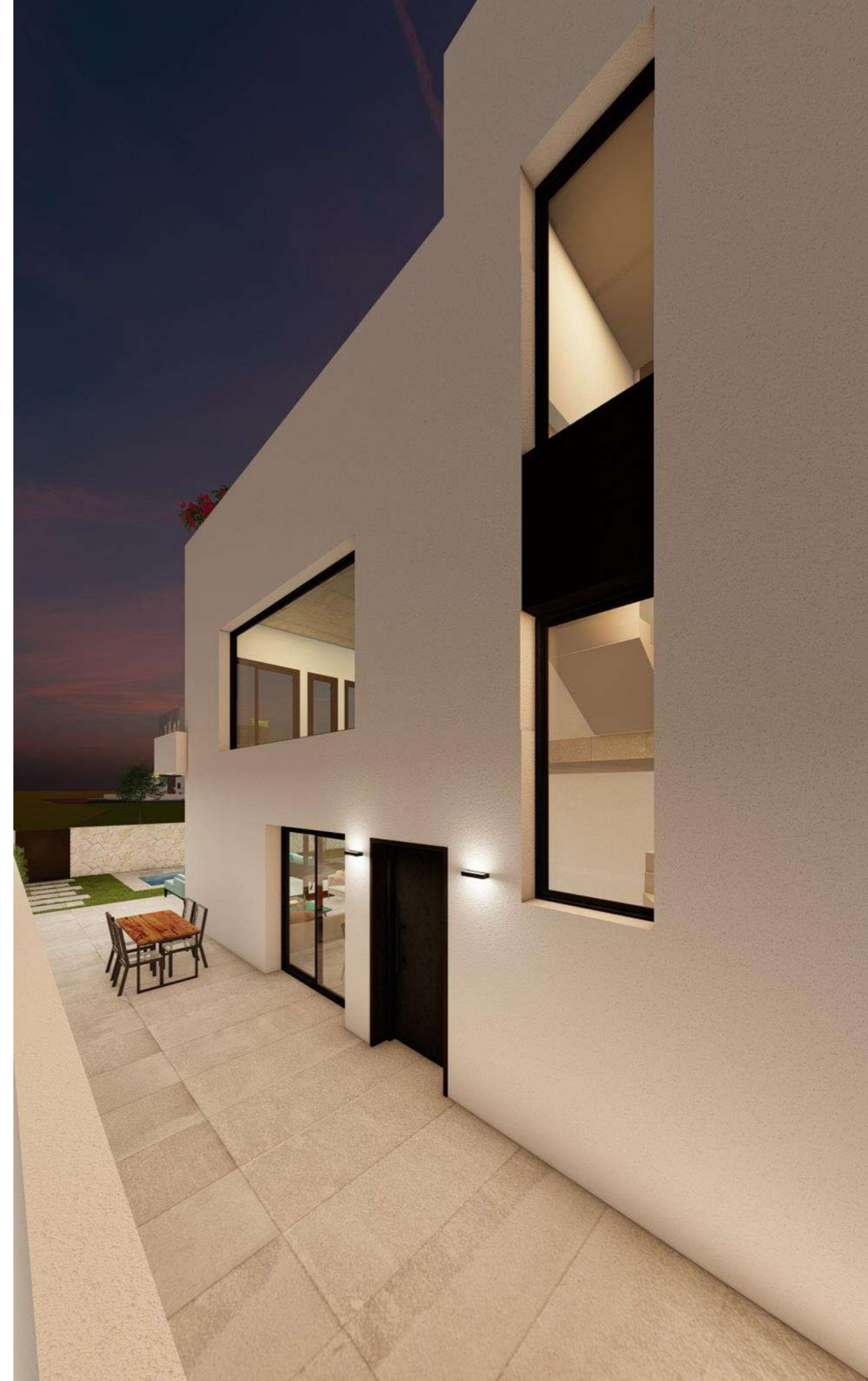








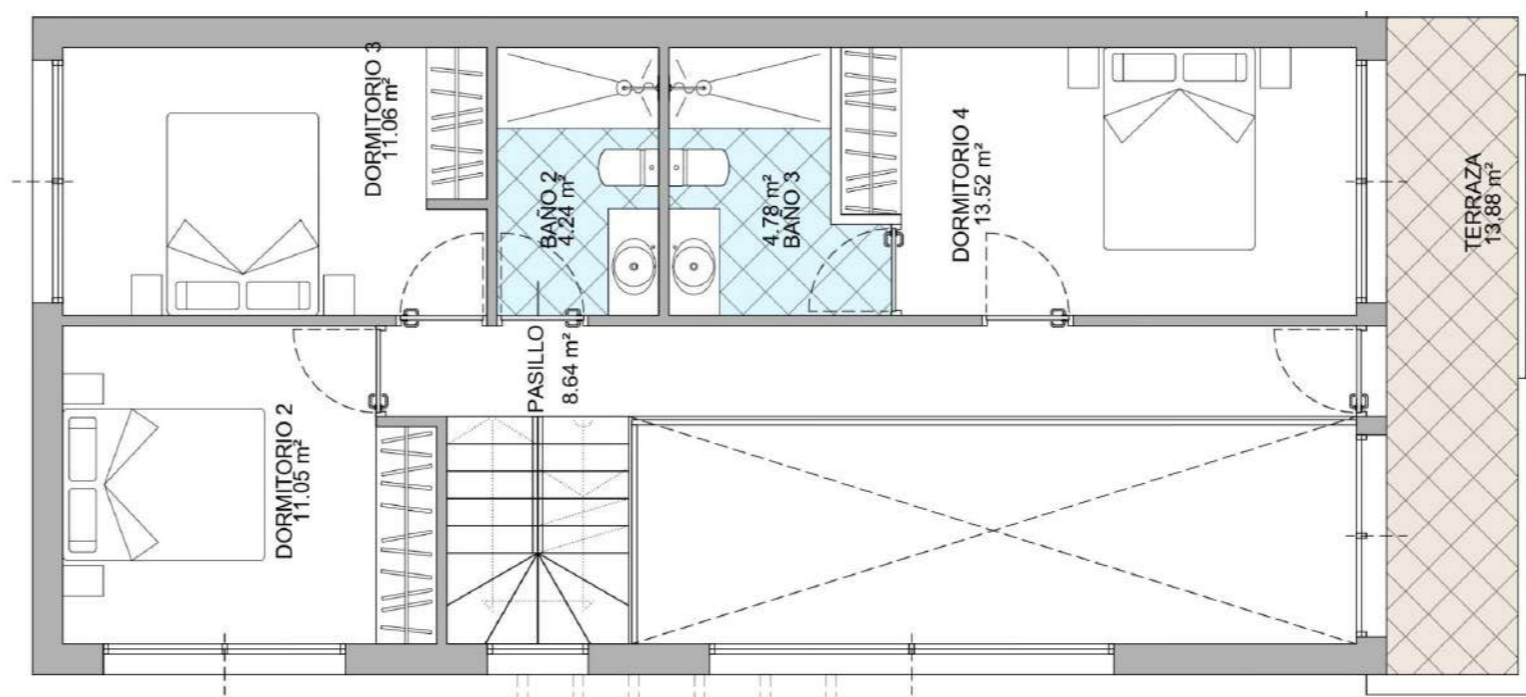
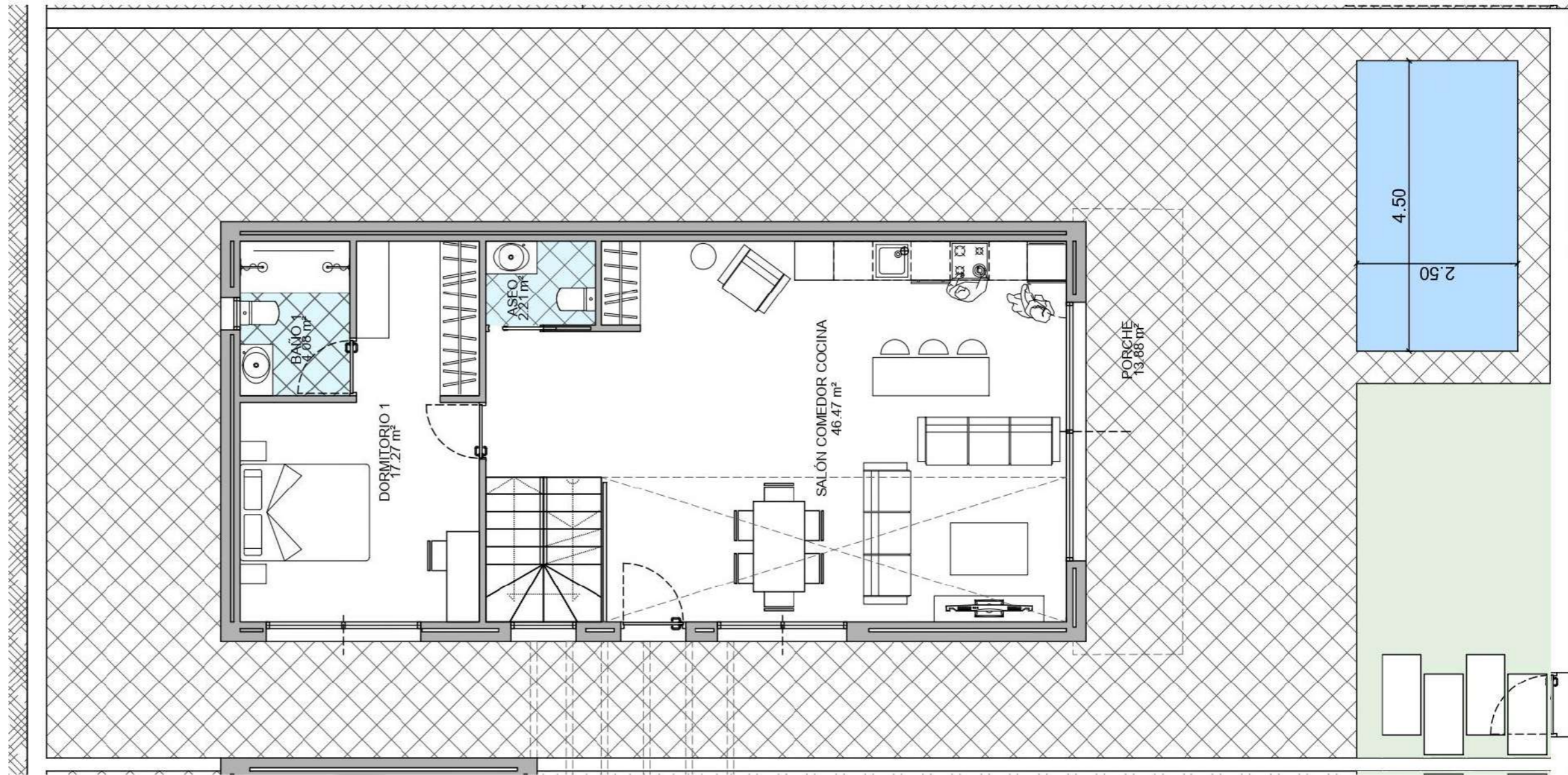












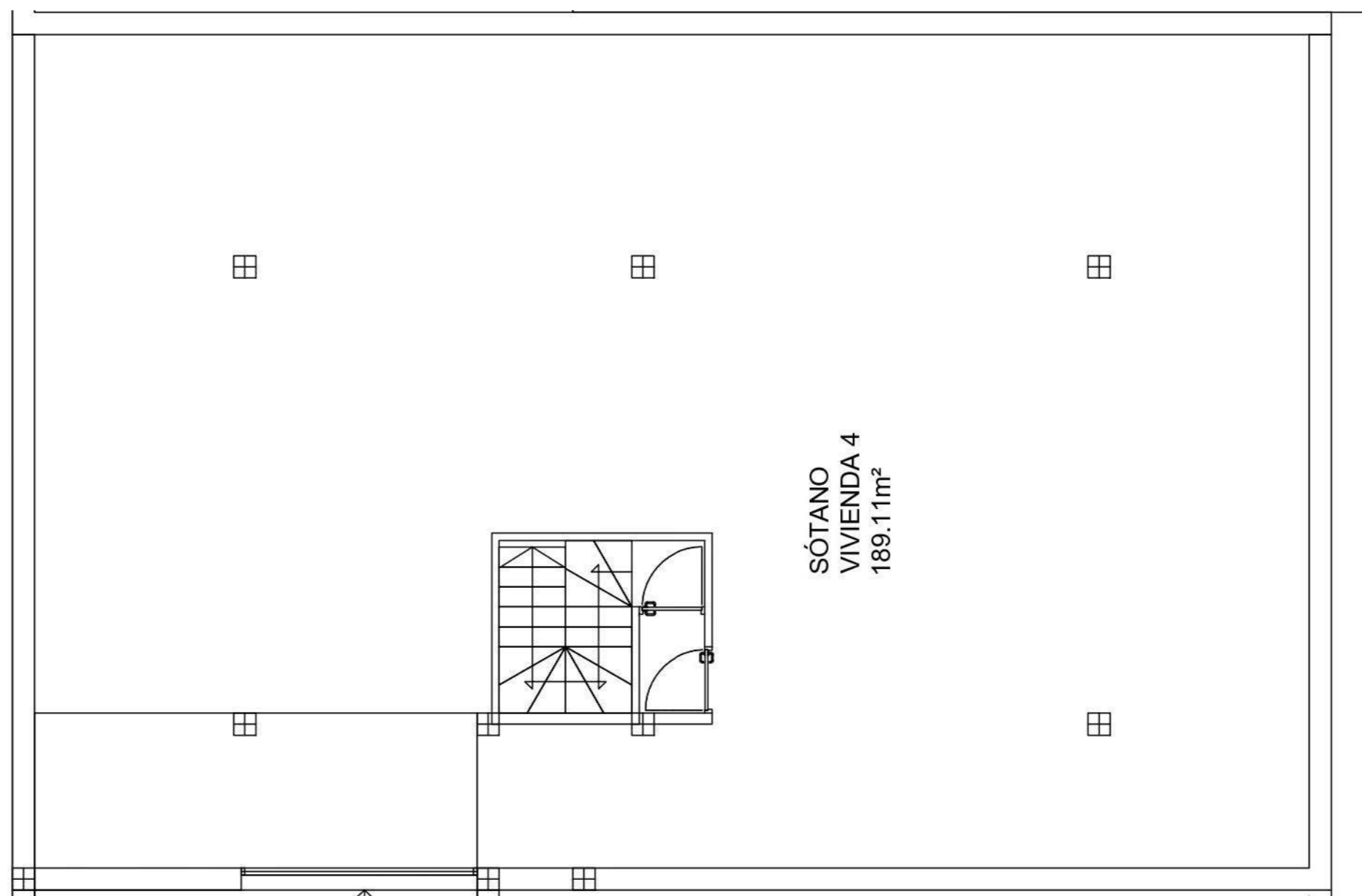
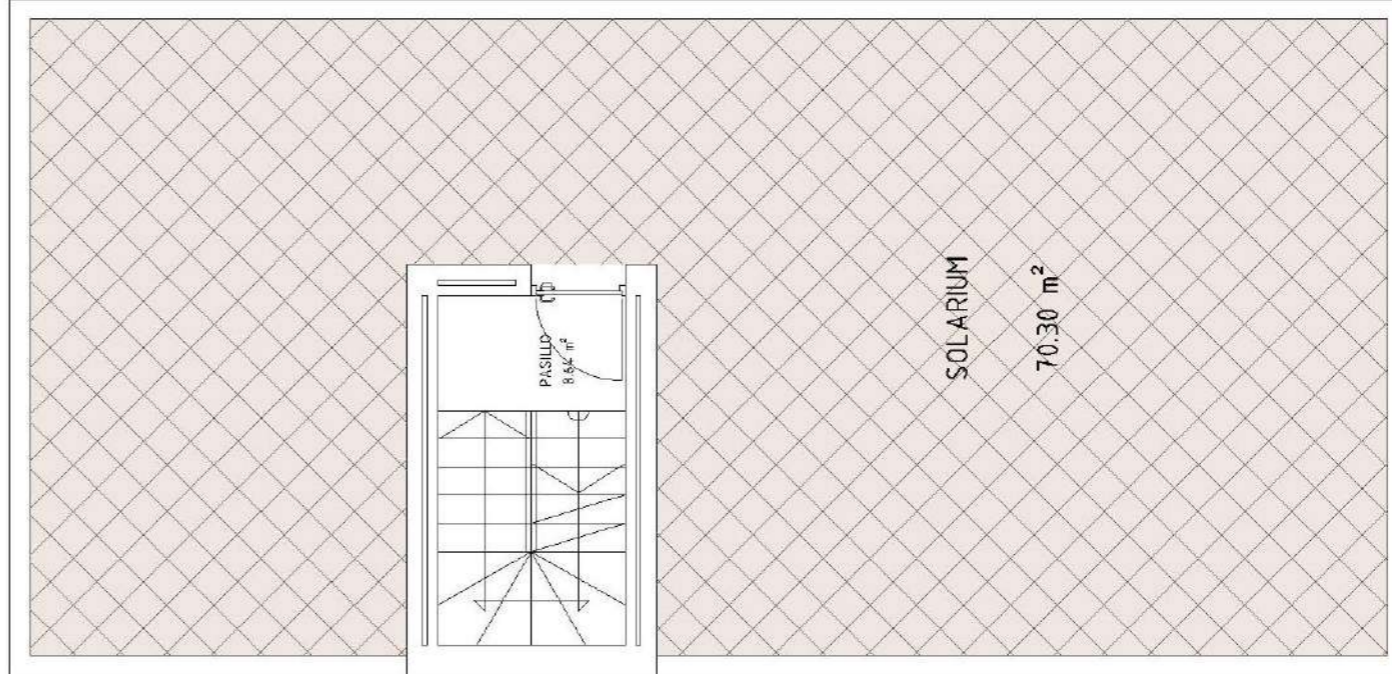
Plot 273m<sup>2</sup>

Villa

- 166m<sup>2</sup> house
- 189,40m<sup>2</sup> basement
- 70,30m<sup>2</sup> solarium

Villa 4 model C<sup>17</sup>



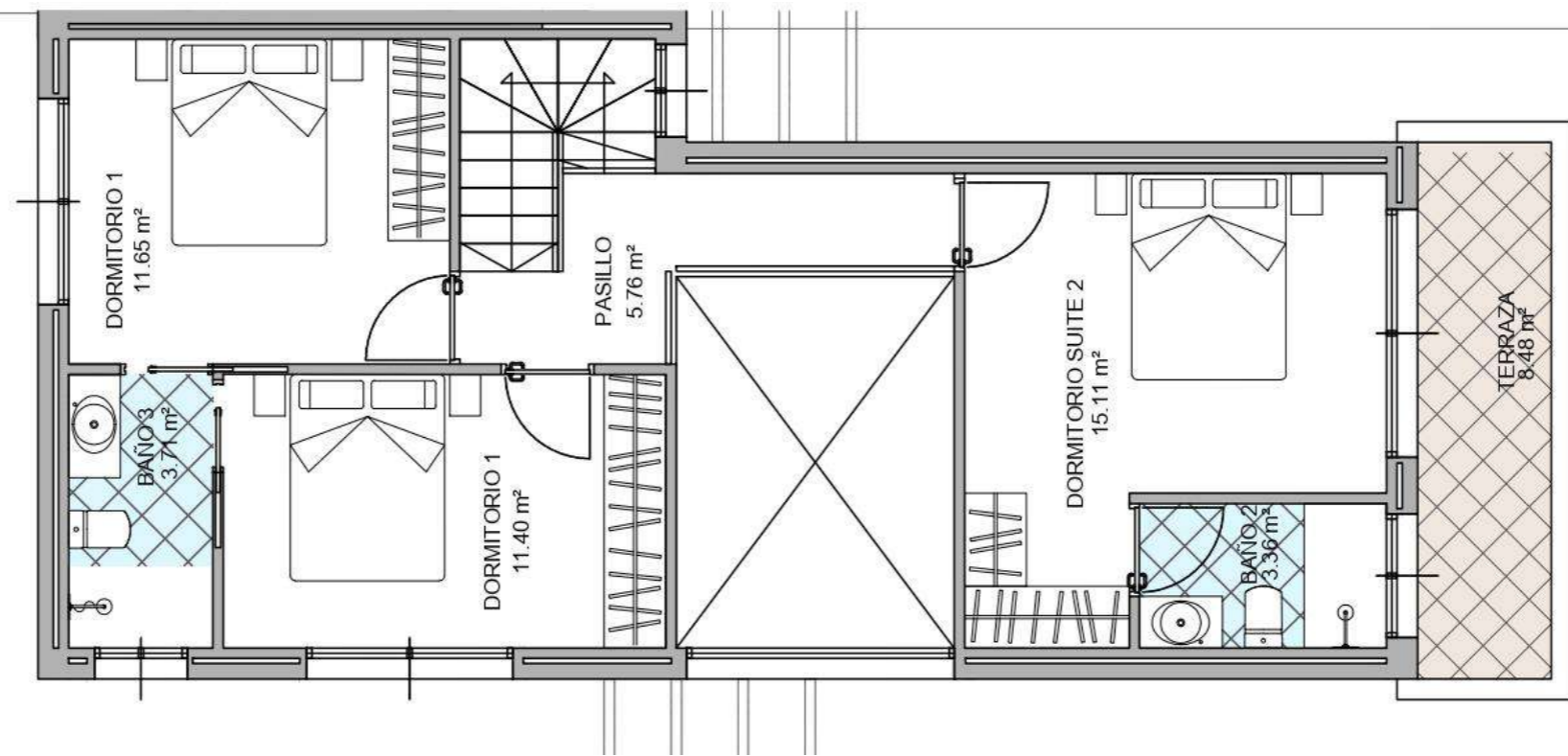
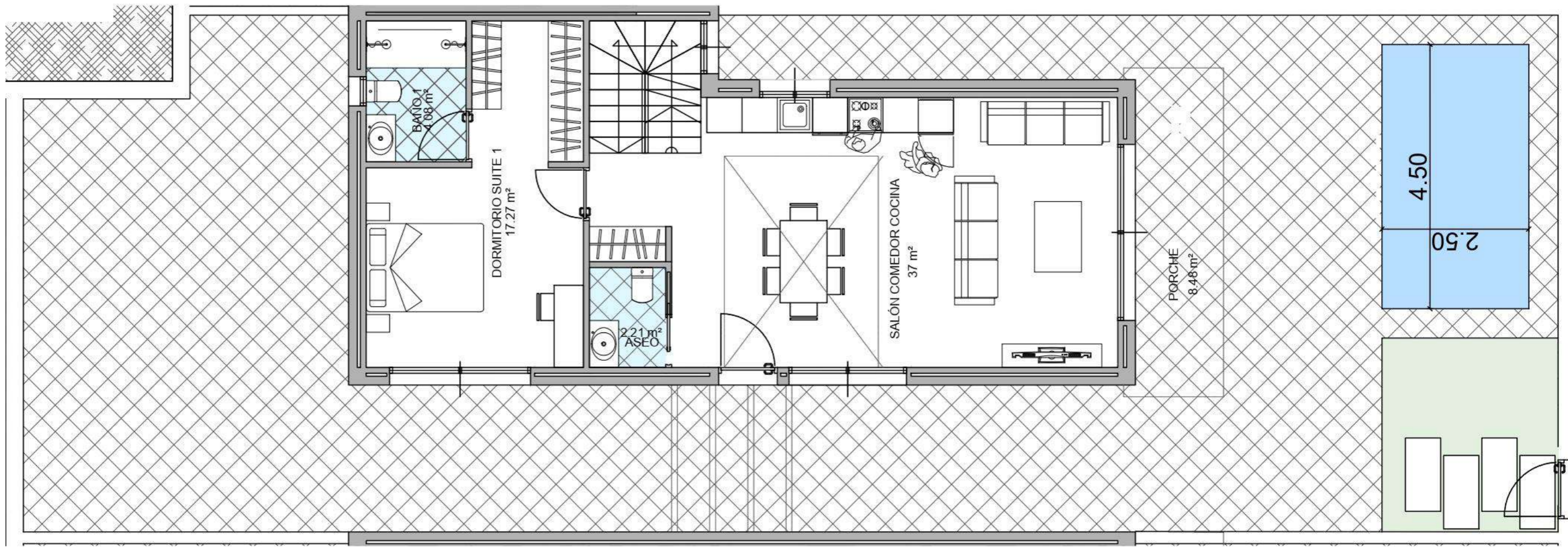


18Plot 273m<sup>2</sup>

- Villa
- 166m<sup>2</sup> house
  - 189,40m<sup>2</sup> basement
  - 70,30m<sup>2</sup> solarium

Villa 4 model C





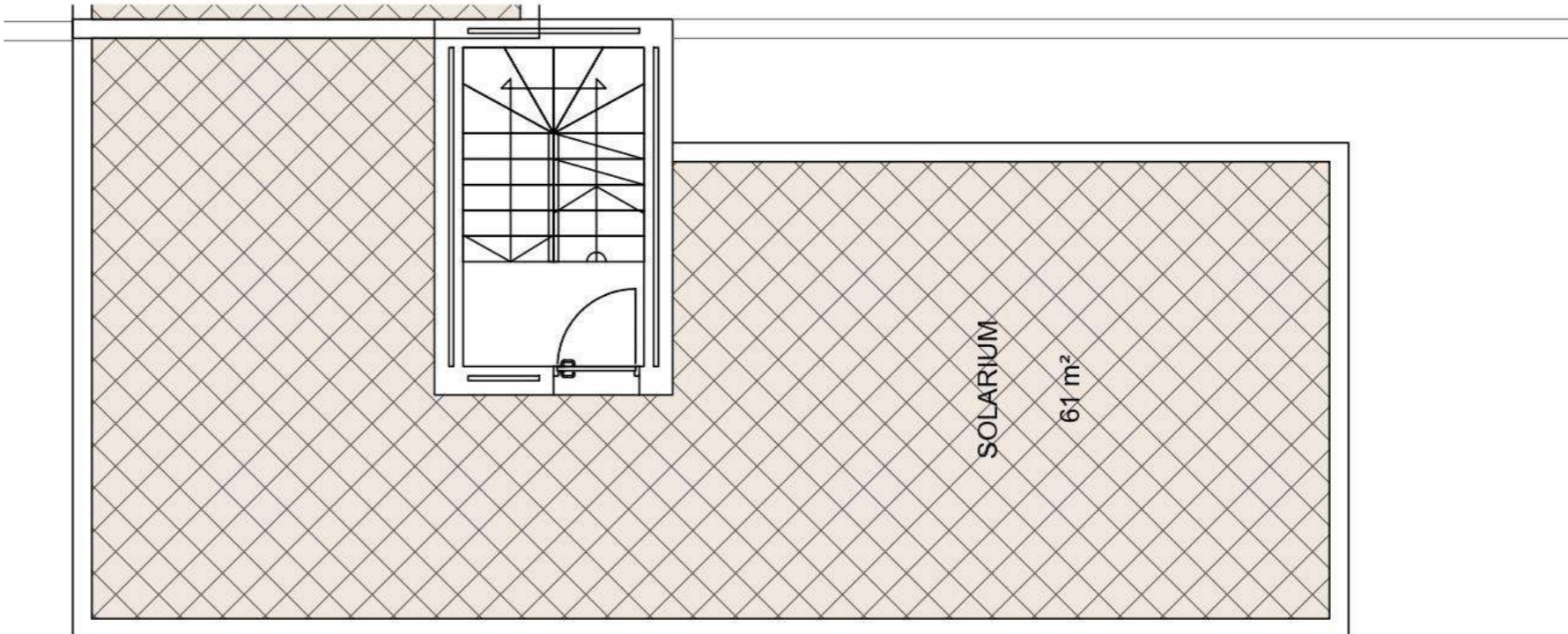
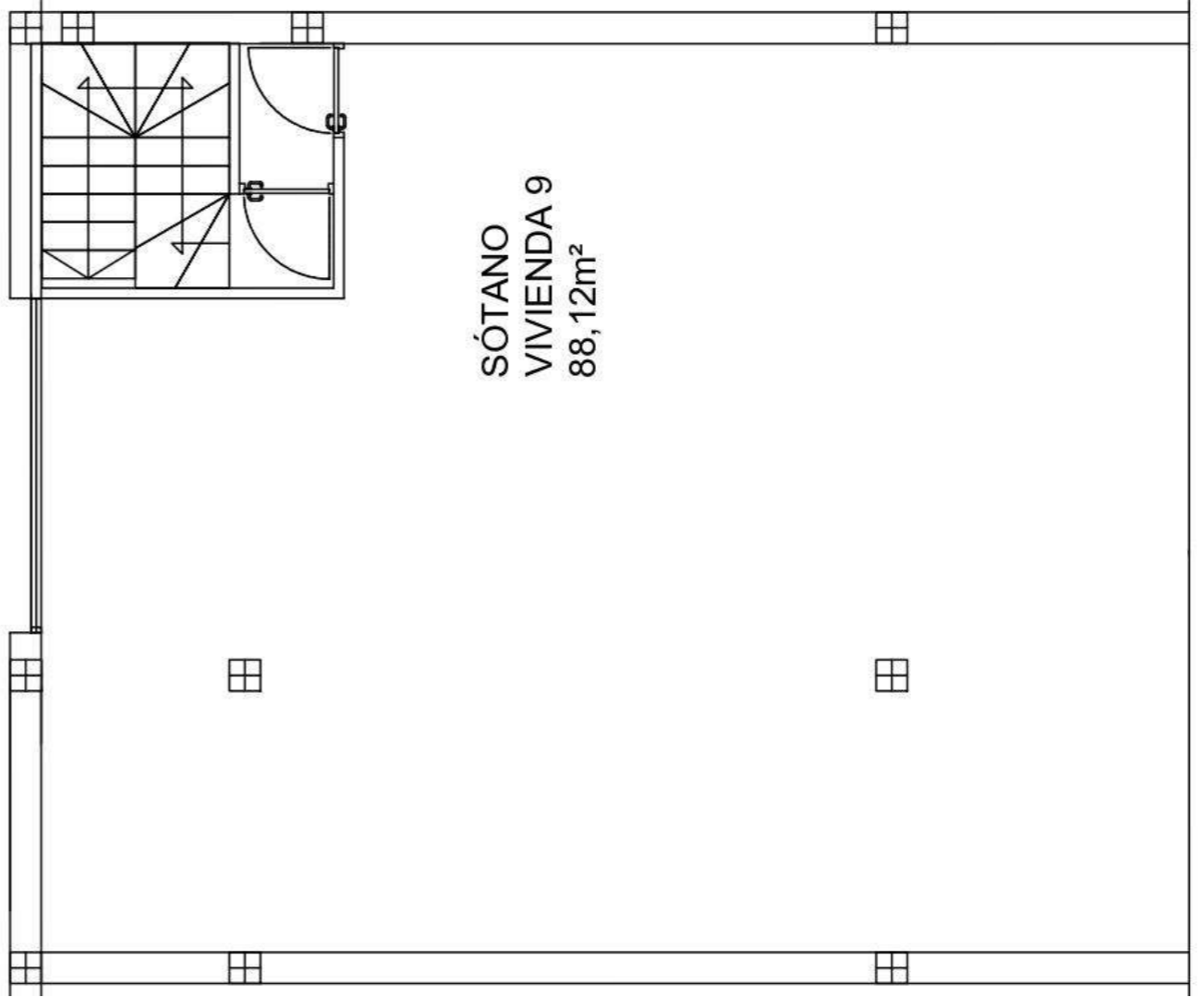
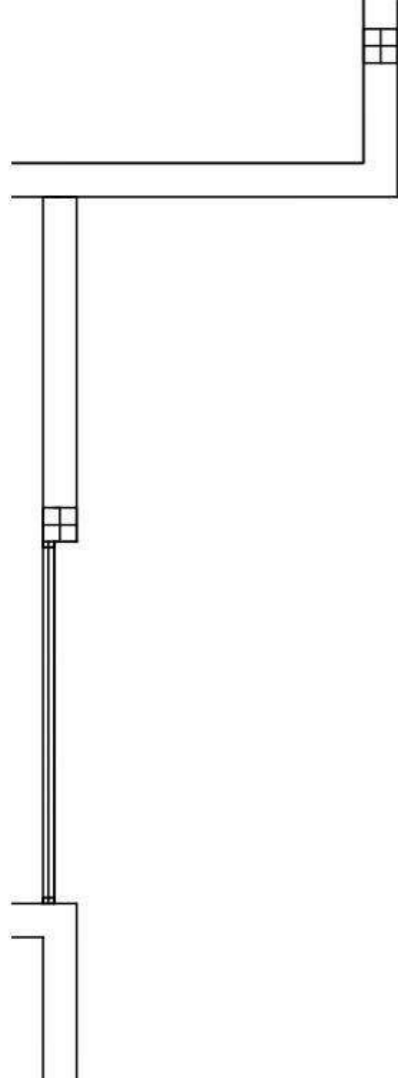
Plot 232m<sup>2</sup>

Villa

- 151,05m<sup>2</sup> house
- 85,61m<sup>2</sup> basement
- 61m<sup>2</sup> solarium

Villa 9 model C<sup>19</sup>





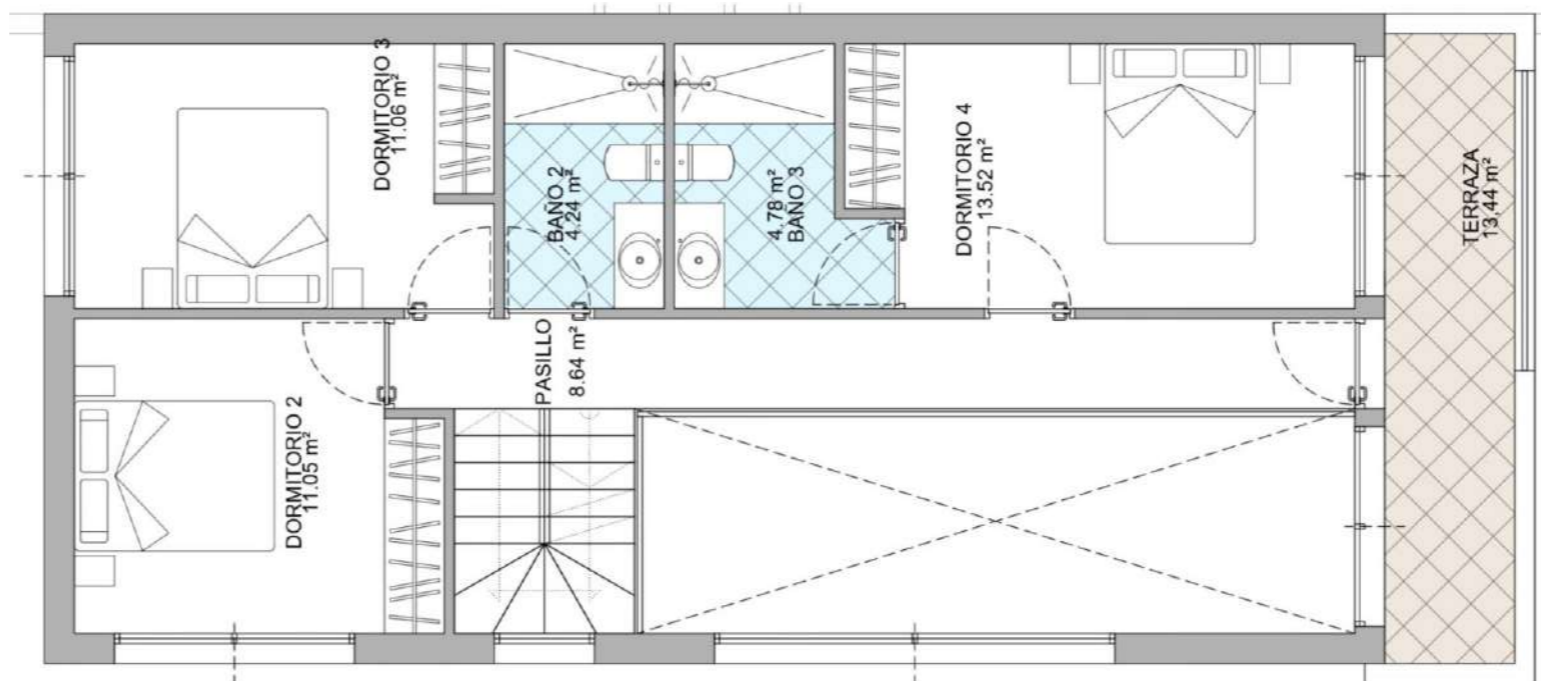
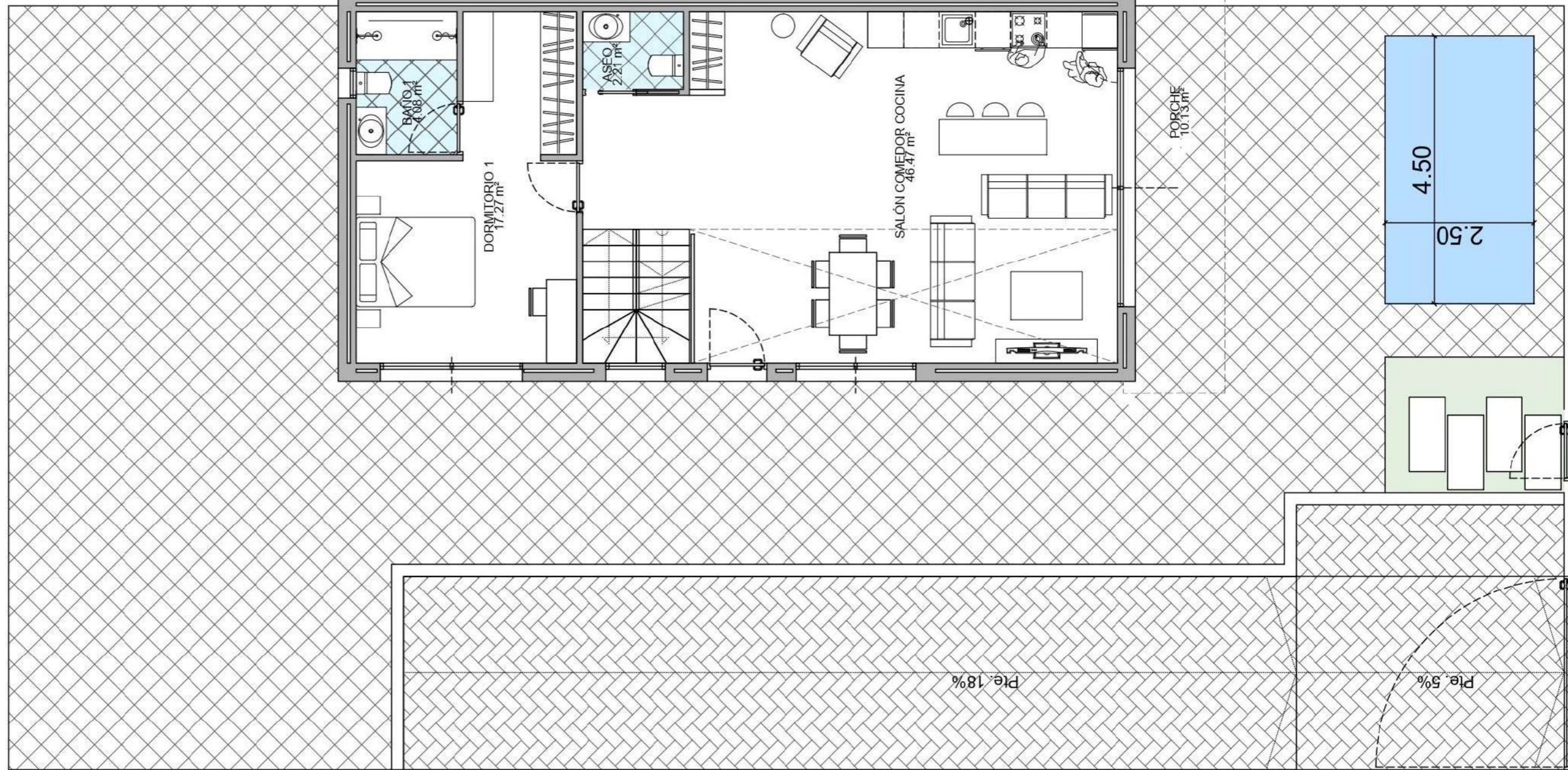
20 Plot 232m<sup>2</sup>

Villa

- 151,05m<sup>2</sup> house
- 85,61m<sup>2</sup> basement
- 61m<sup>2</sup> solarium

Villa 9 model C





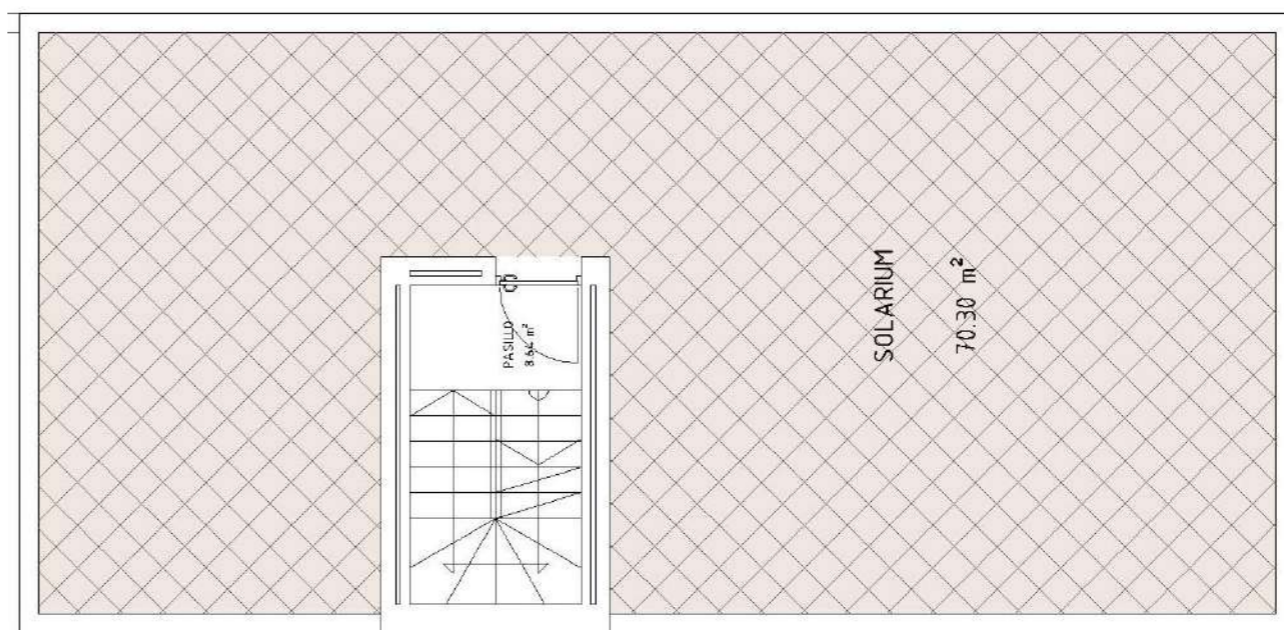
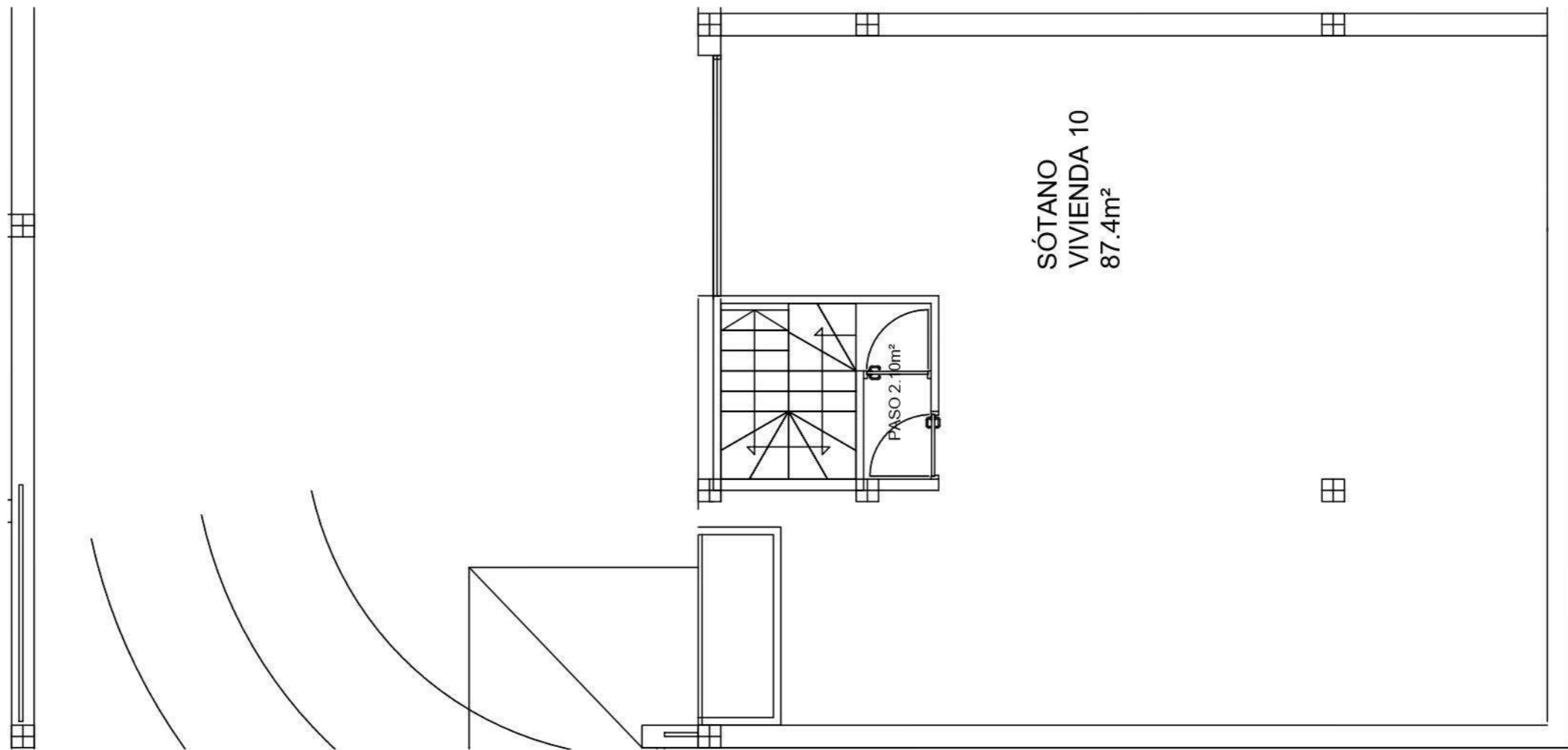
Plot 275m<sup>2</sup>

Villa

- 166m<sup>2</sup> house
- 86,41m<sup>2</sup> basement
- 70,30m<sup>2</sup> solarium

Villa 10 model C <sup>21</sup>





22Plot 275m<sup>2</sup>

Villa

- 166m<sup>2</sup> house
- 86,41m<sup>2</sup> basement
- 70,30m<sup>2</sup> solarium

Villa 10 model C





Villa model D





106

104





106

104





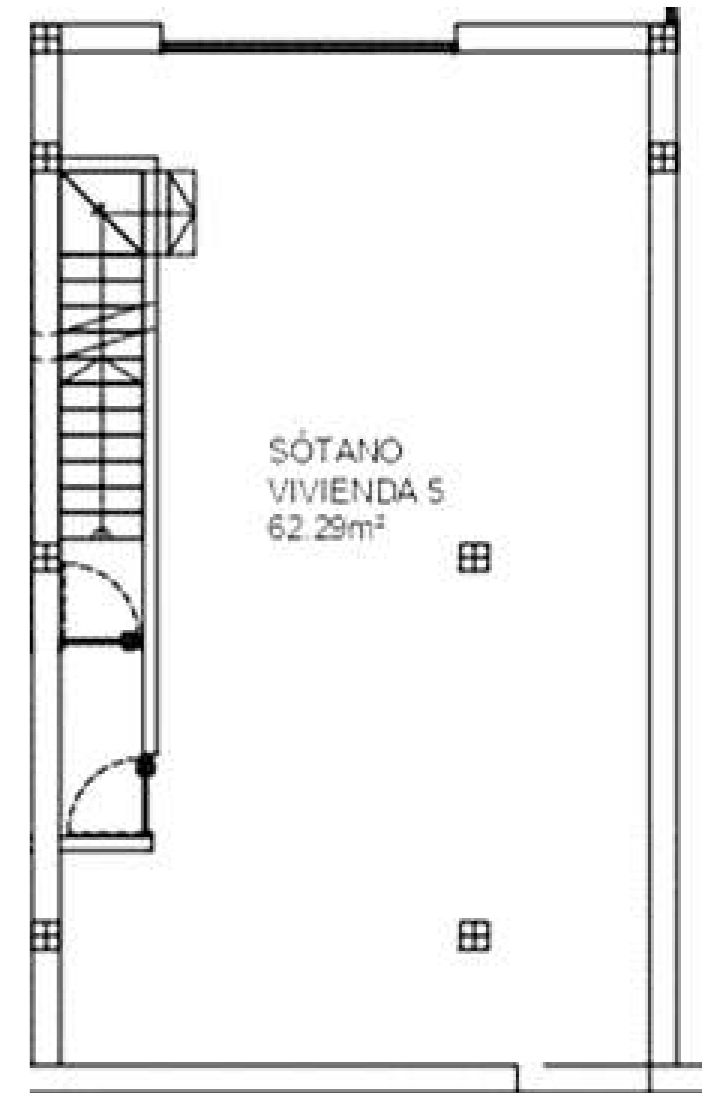
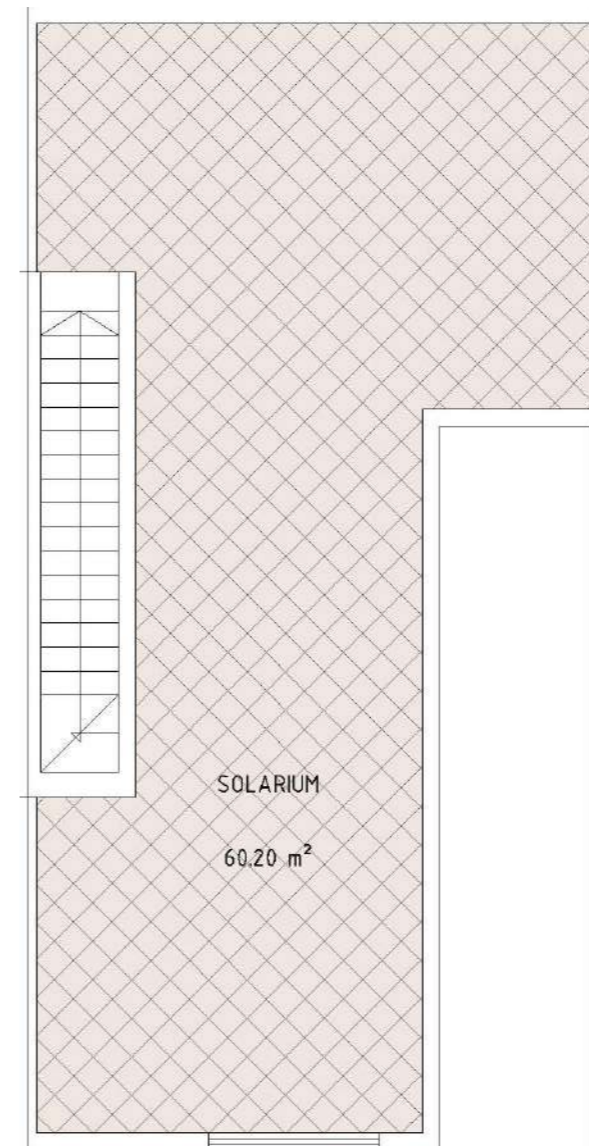
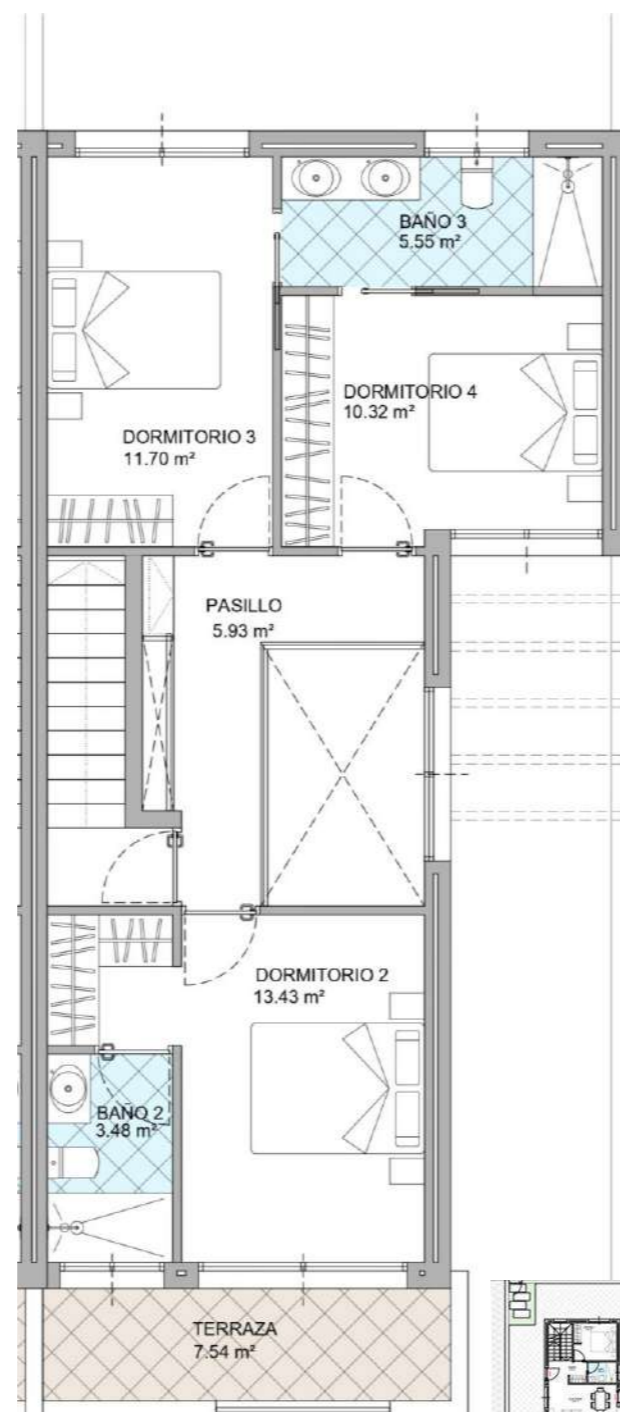
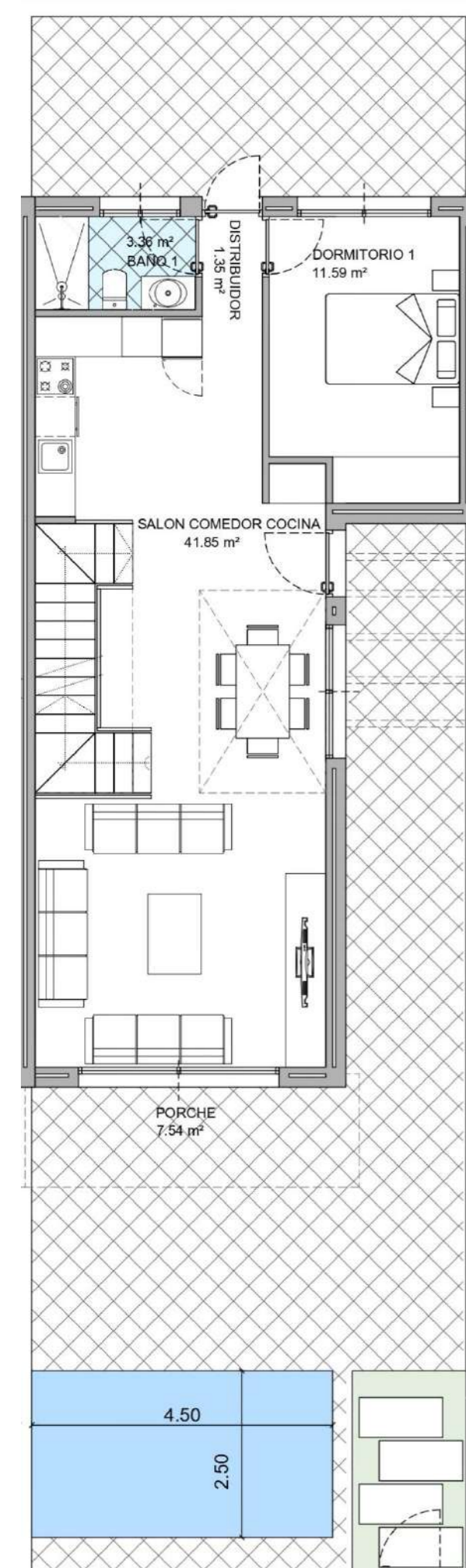












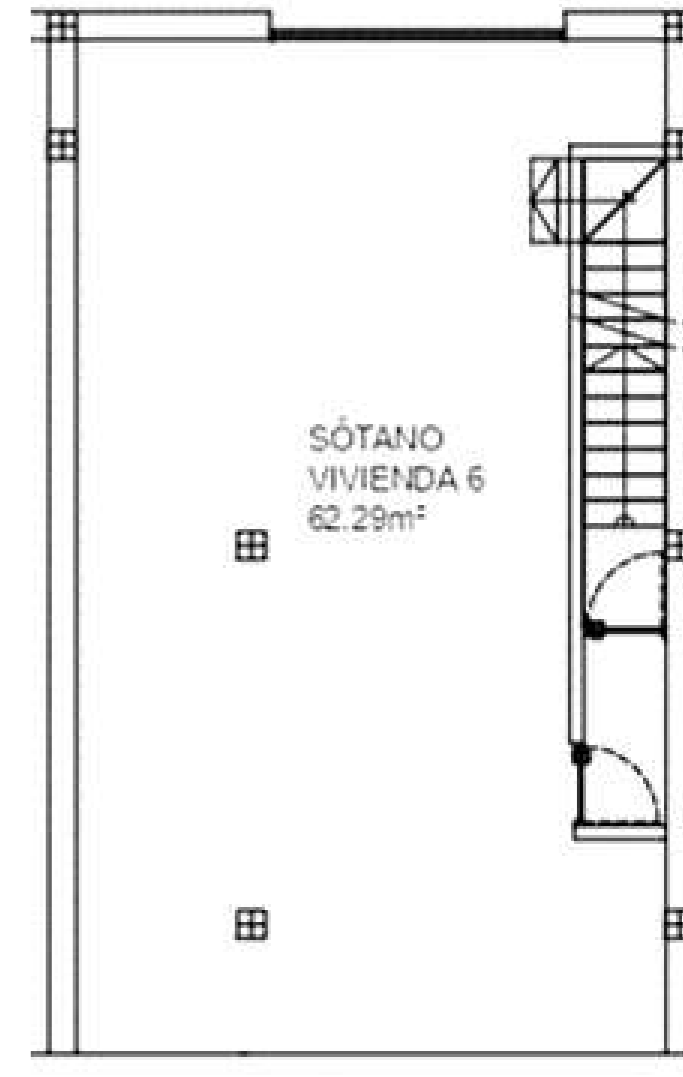
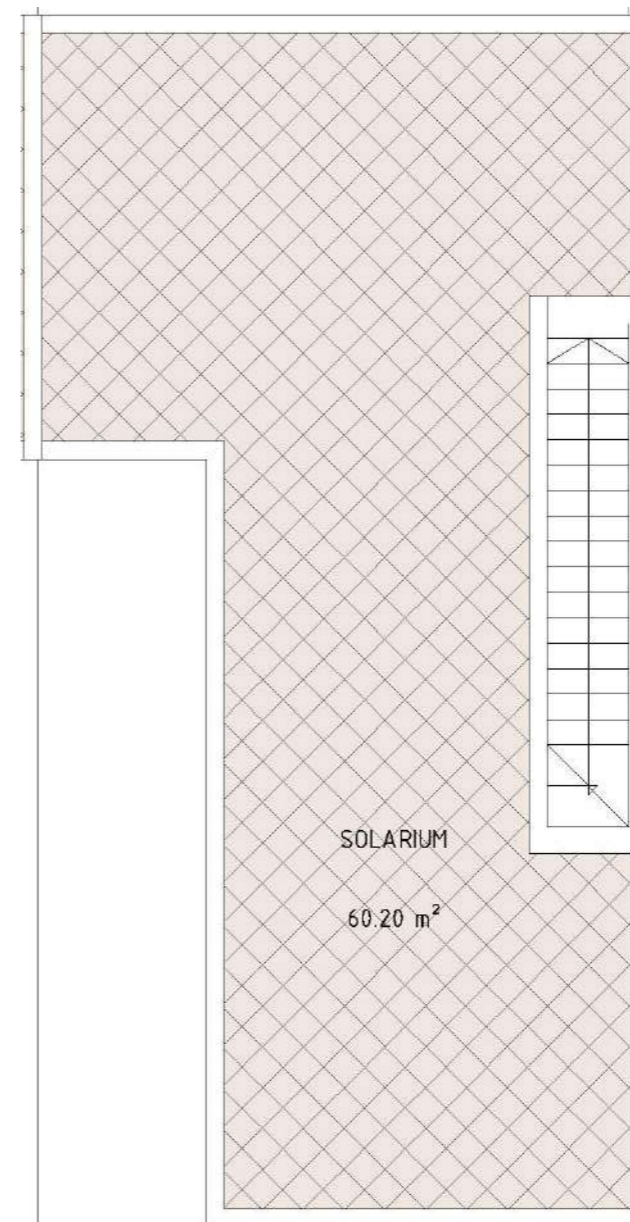
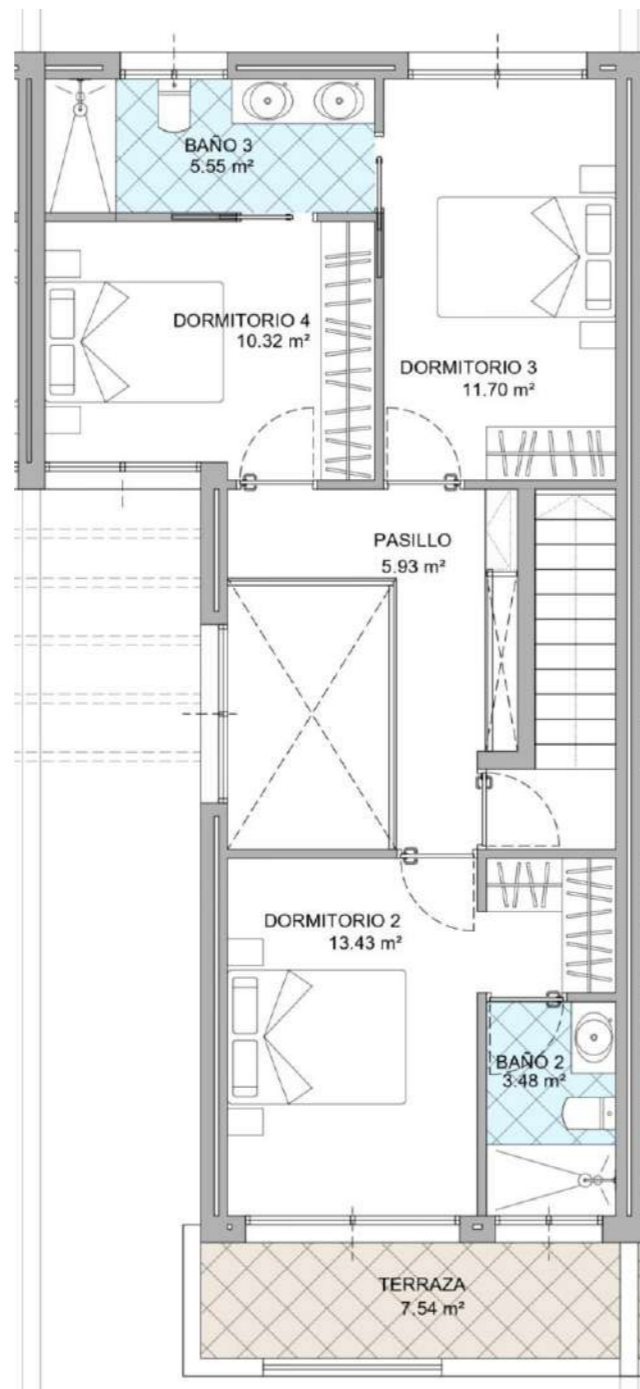
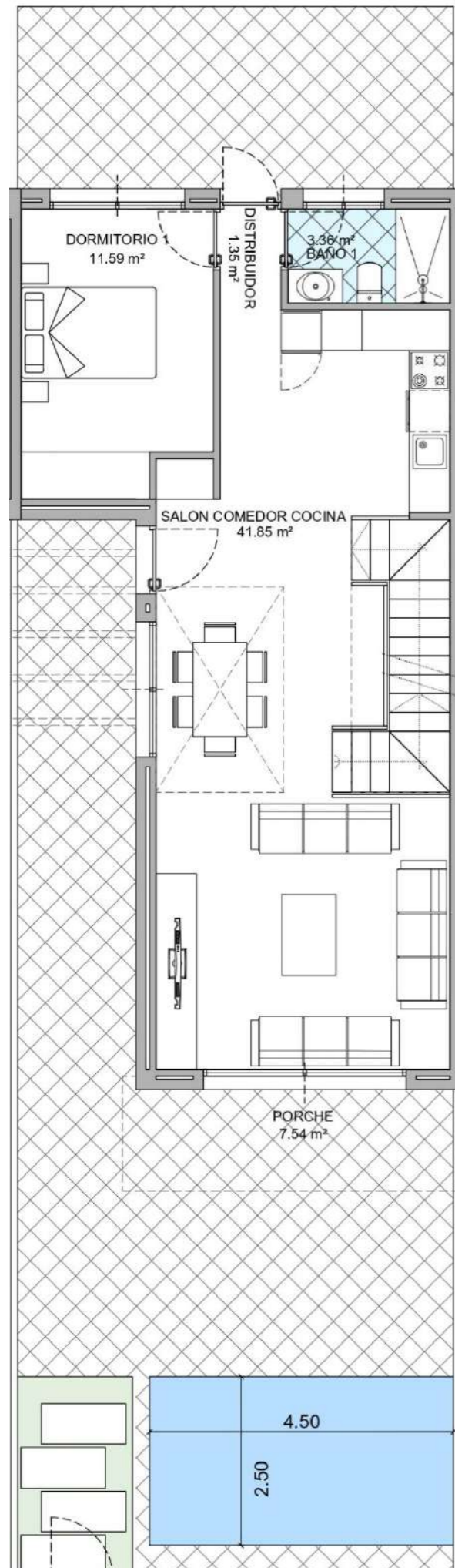
Plot 159m<sup>2</sup>

Villa

- 132,50m<sup>2</sup> house
- 61,55m<sup>2</sup> basement
- 60,20m<sup>2</sup> solarium

Villa 5 model D <sup>29</sup>





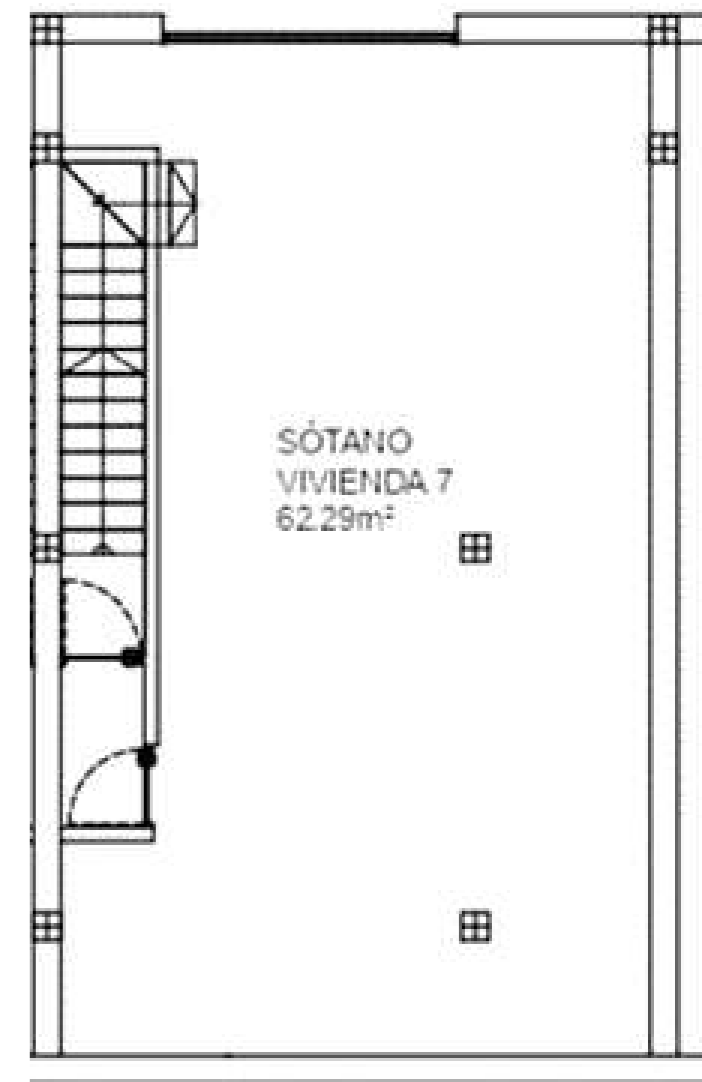
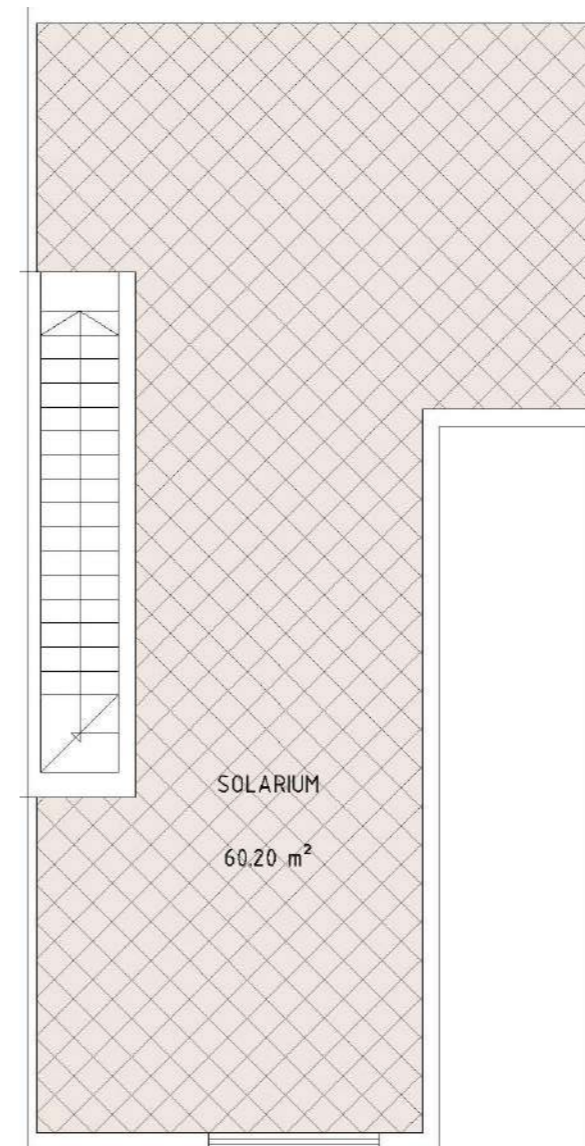
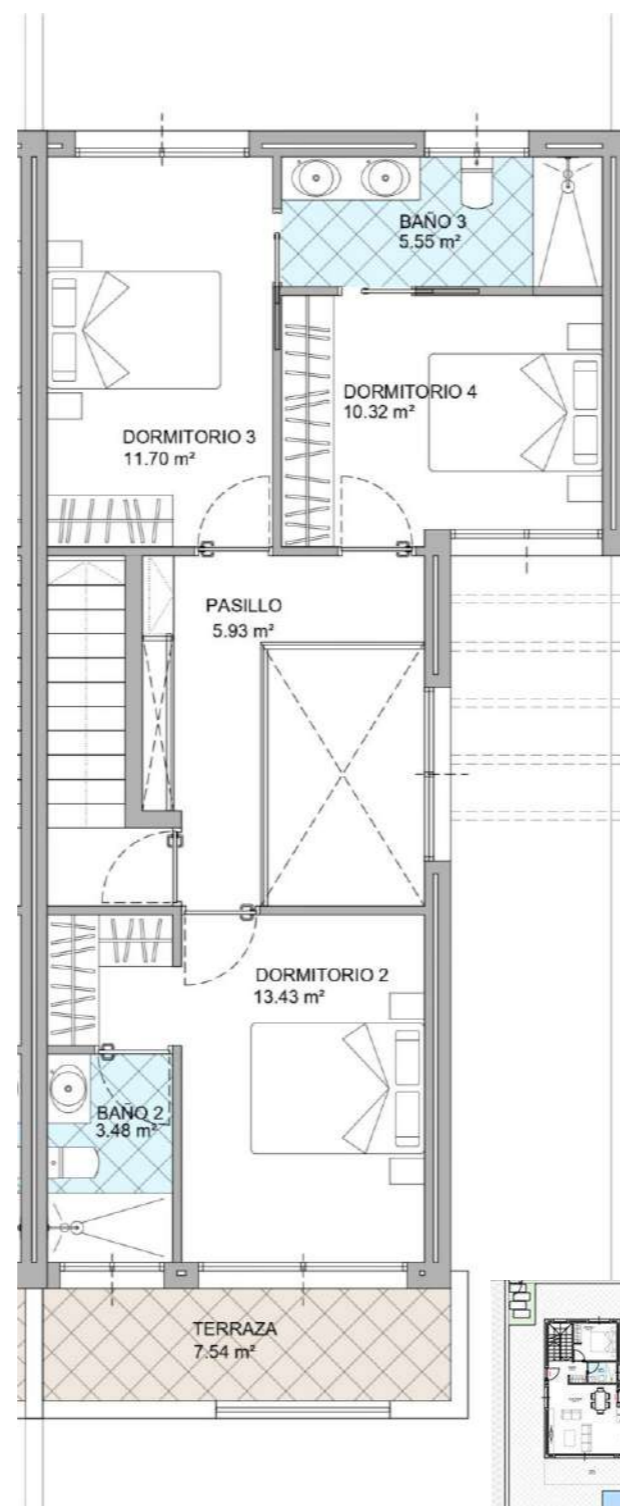
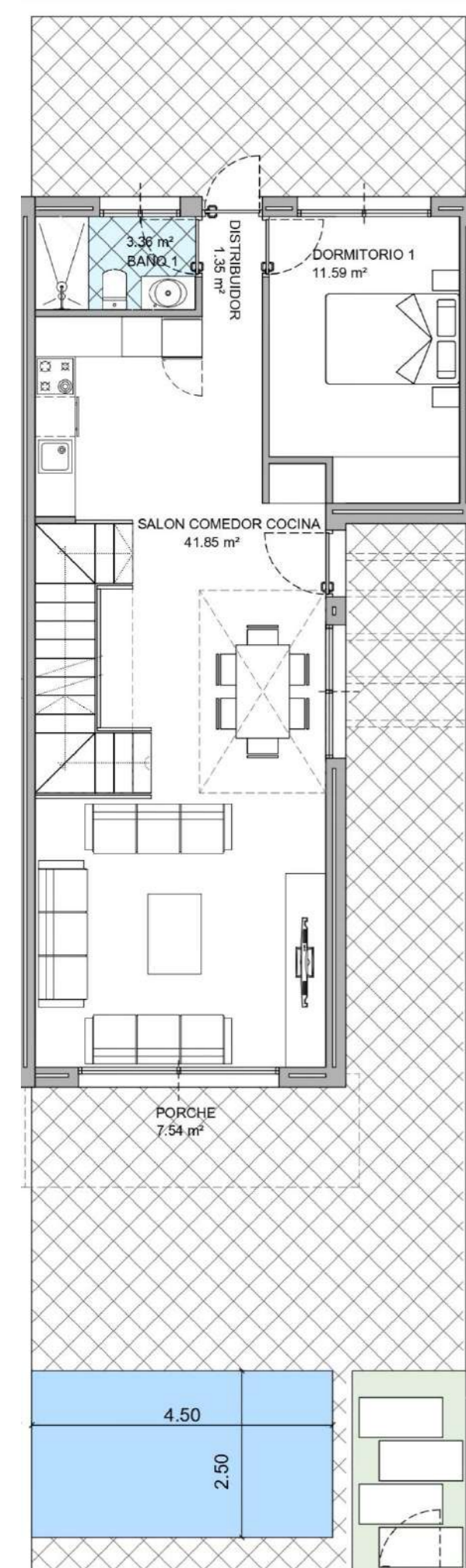
30 Plot 159m<sup>2</sup>

Villa

- 132,50m<sup>2</sup> house
- 61,55m<sup>2</sup> basement
- 60,20m<sup>2</sup> solarium

Villa 6 model D





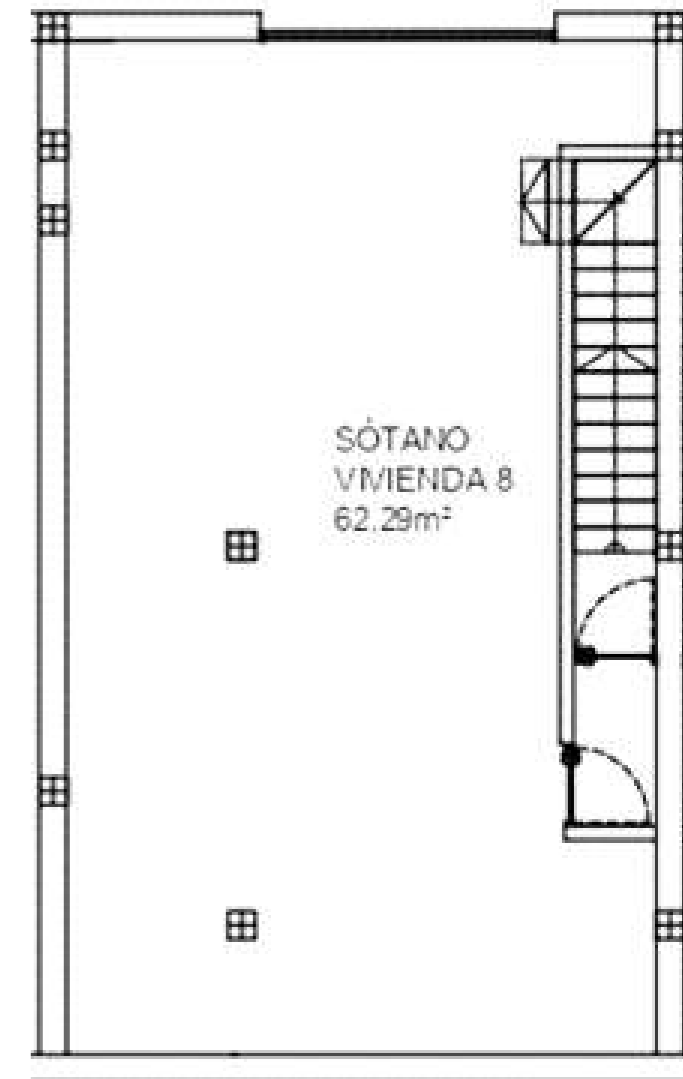
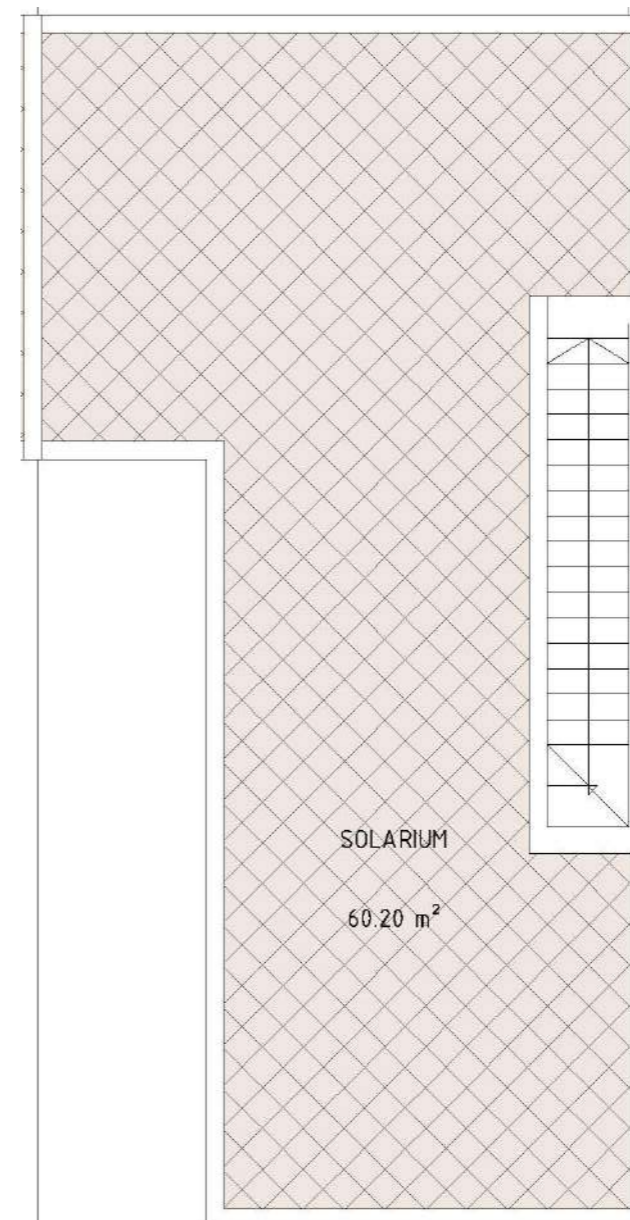
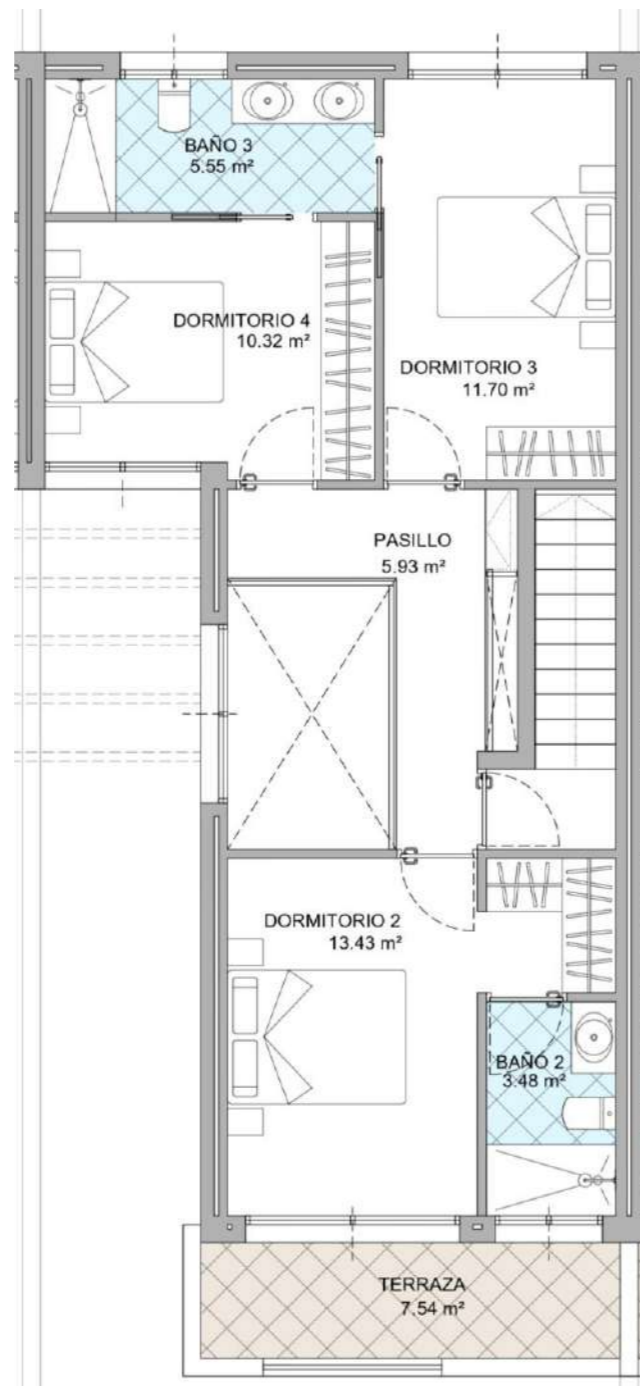
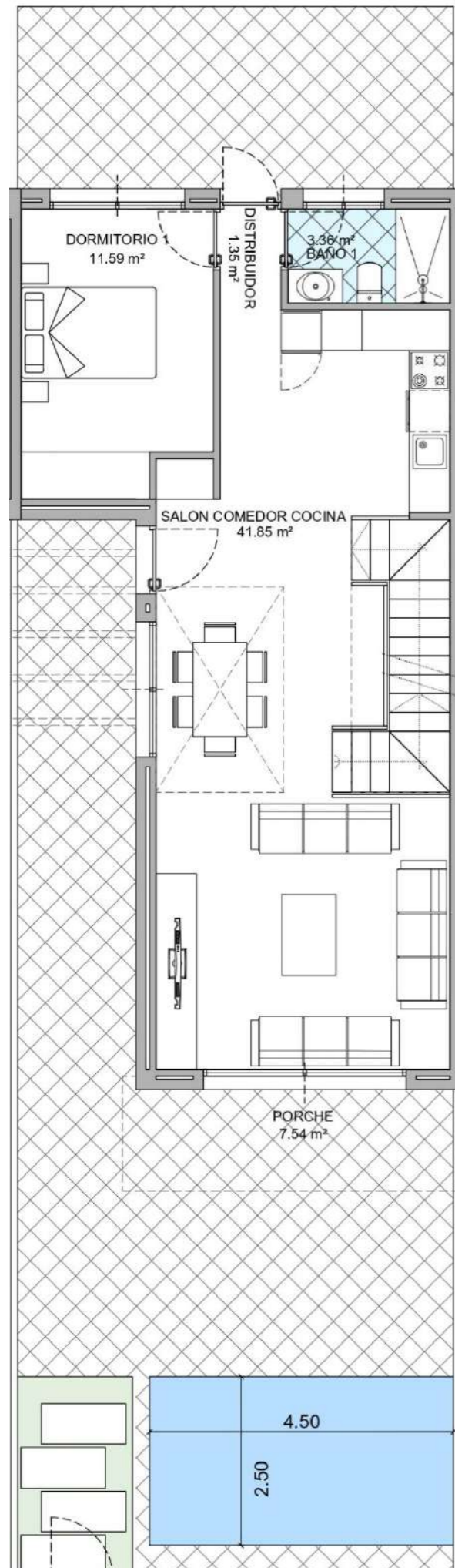
Plot 159m<sup>2</sup>

Villa

- 132,50m<sup>2</sup> house
- 61,55m<sup>2</sup> basement
- 60,20m<sup>2</sup> solarium

Villa 7 model D <sup>31</sup>





32 Plot 159m<sup>2</sup>

Villa - 132,50m<sup>2</sup> house  
 - 61,55m<sup>2</sup> basement  
 - 60,20m<sup>2</sup> solarium

Villa 8 model D



**Structure:**

- Structure with reinforced concrete columns and beams, and reticular stay-in-place forms.

**Roofs**

- Roofs are flat walk-on roofs finished in low-slip stoneware ceramics for use around the solarium.

**Specifications**

- The façade is formed of a two-leaf wall enclosure with cavity insulation: exterior cladding with painted mortar as per design on brick wall with interior water-repellent render; cavity thermal insulation in accordance with regulatory specifications
- Inner divisions using ceramic brick
- Lowered ceiling throughout in laminated plaster finished with plastic paint, openable in the bathrooms for installation and access to air conditioning installation for maintenance.
- Interior floor, premium quality stoneware wall tiles in all homes.
- Exterior floor, stoneware tiles with slip-resistant finish.
- Bathrooms have wall tiles in all wet areas, with smooth paint on other surfaces. Kitchens have wall tiles along worktop front, with other surfaces in smooth paint.
- Indoor doors lacquered, smooth in white.
- Built-in wardrobes, fully-fitted, with sliding doors in same finish as indoor doors.
- Exterior joinery of the entire property in premium aluminum in brown.
- All shutters are finished in the same colour as the joinery
- and are motorised.

- Climalit or similar brand double-glazing with air chamber
- TV sockets in living room, all bedrooms
- Indoor plastic-pipe plumbing with approved tubing material.
- Sanitary Hot Water (SHW) is produced by the aerothermal heat pump hot water accumulator.
- Electric radiant underfloor heating in bathrooms.
- Premium quality sanitaryware and mixer taps.
- Resin shower trays with a finish similar to the colour of the bathroom floor tiles or in white, with a glass screen
- Water tap in solariums and gardens
- Bathroom furniture with mirror.
- Installed air-conditioning (hot/cold), duct type, with outdoor unit or heat pump located on roof. Indoor unit located in bathroom ceilings on each floor. Thermostat in the lounge/dining room.
- Armoured security front door, with structure and pre-frame in steel, blocking mechanism, double security lock and anti-crowbar hinges.
- Totally fitted with upper and lower kitchen units to ceiling (personalisation options),
- Indoor and outdoor lighting pack included(non-decorative). Basements lights included.
- Shower in pool.

*The selling company reserves the right to make modifications that are officially imposed or those motivated by technical, juridical or commercial reasons on the construction work. This document is not contractual.*