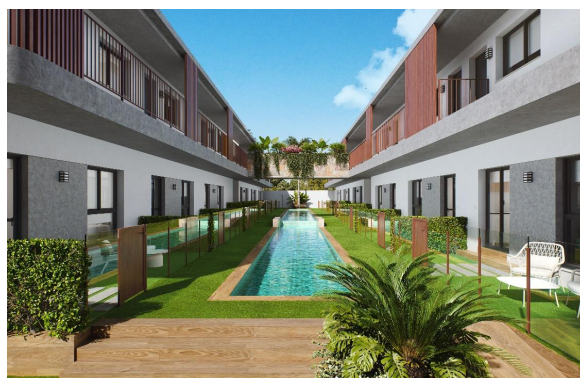


PRECIOS AGENCIA / AGENCY PRICES
DISPONIBILIDAD / AVAILABILITY LIST

24/6/2024

RESIDENCIAL "BENOA THAI", Pilar de la Horadada



| HOUSE Nº | FLOOR | BEDS / BATH | M2 | FRONT TERRACE | REAR TERRACE / SOLARIUM | GARAGE Nº | PRICE/€ | AVAILABILITY |
|-------------|--------|-------------|-------|---------------|-------------------------|-----------|-----------|---------------------|
| Bj-A (59) | GROUND | 3/2 | 87.27 | 64.66 | 19.96 | 59 | | RESERVED |
| Bj-B (61) | GROUND | 2/2 | 70.03 | 34.23 | 15.18 | 61 | | RESERVED |
| Bj-C (63) | GROUND | 2/2 | 71.56 | 34.40 | 15.51 | 63 | 224,900 € | AVAILABLE |
| Bj-D (77) | GROUND | 2/2 | 71.56 | 32.22 | 15.51 | 77 | 249,900 € | SHOW HOUSE NOW OPEN |
| Bj-E (79) | GROUND | 2/2 | 70.04 | 37.94 | 15.18 | 79 | | RESERVED |
| Bj-F (81) | GROUND | 2/2 | 71.56 | 69.00 | 20.31 | 81 | | RESERVED |
| Bj-G (58) | GROUND | 2/2 | 71.56 | 34.55 | 15.51 | 58 | | RESERVED |
| Bj-H (60) | GROUND | 2/2 | 70.03 | 33.81 | 15.23 | 60 | | RESERVED |
| Bj-I (62) | GROUND | 3/2 | 86.58 | 43.98 | 14.96 | 62 | | RESERVED |
| Bj-J (76) | GROUND | 2/2 | 71.56 | 34.13 | 15.51 | 76 | | RESERVED |
| Bj-K (78) | GROUND | 2/2 | 70.03 | 33.81 | 15.18 | 78 | | RESERVED |
| Bj-L (80) | GROUND | 3/2 | 87.27 | 75.93 | 21.93 | 80 | | RESERVED |
| 1º-A (65) | FIRST | 3/2 | 87.27 | 13.44 | 80.74 | 4 | | RESERVED |
| 1º-B (67) | FIRST | 2/2 | 70.04 | 8.81 | 64.03 | 5 | | RESERVED |
| 1º-C (69) | FIRST | 2/2 | 71.56 | 8.81 | 64.39 | 2 | | RESERVED |
| 1º-D (71) | FIRST | 2/2 | 71.56 | 9.07 | 65.88 | 1 | | RESERVED |
| 1º-E (73) | FIRST | 2/2 | 70.04 | 8.81 | 64.03 | 6 | | RESERVED |
| 1º-F (75) | FIRST | 3/2 | 87.77 | 13.69 | 81.31 | 3 | | RESERVED |
| 1º-G (64) | FIRST | 2/2 | 71.56 | 8.81 | 65.63 | 10 | | RESERVED |
| 1º-H (66) | FIRST | 2/2 | 70.03 | 8.81 | 64.03 | 9 | | RESERVED |
| 1º-I (68) | FIRST | 3/2 | 86.58 | 12.62 | 80.74 | 11 | | RESERVED |
| 1º-J (70) | FIRST | 2/2 | 71.56 | 9.12 | 65.88 | 8 | | RESERVED |
| 1º-K (72) | FIRST | 2/2 | 70.03 | 8.81 | 64.03 | 7 | | RESERVED |
| 1º-L (74) | FIRST | 3/2 | 87.27 | 12.62 | 80.74 | 12 | | RESERVED |