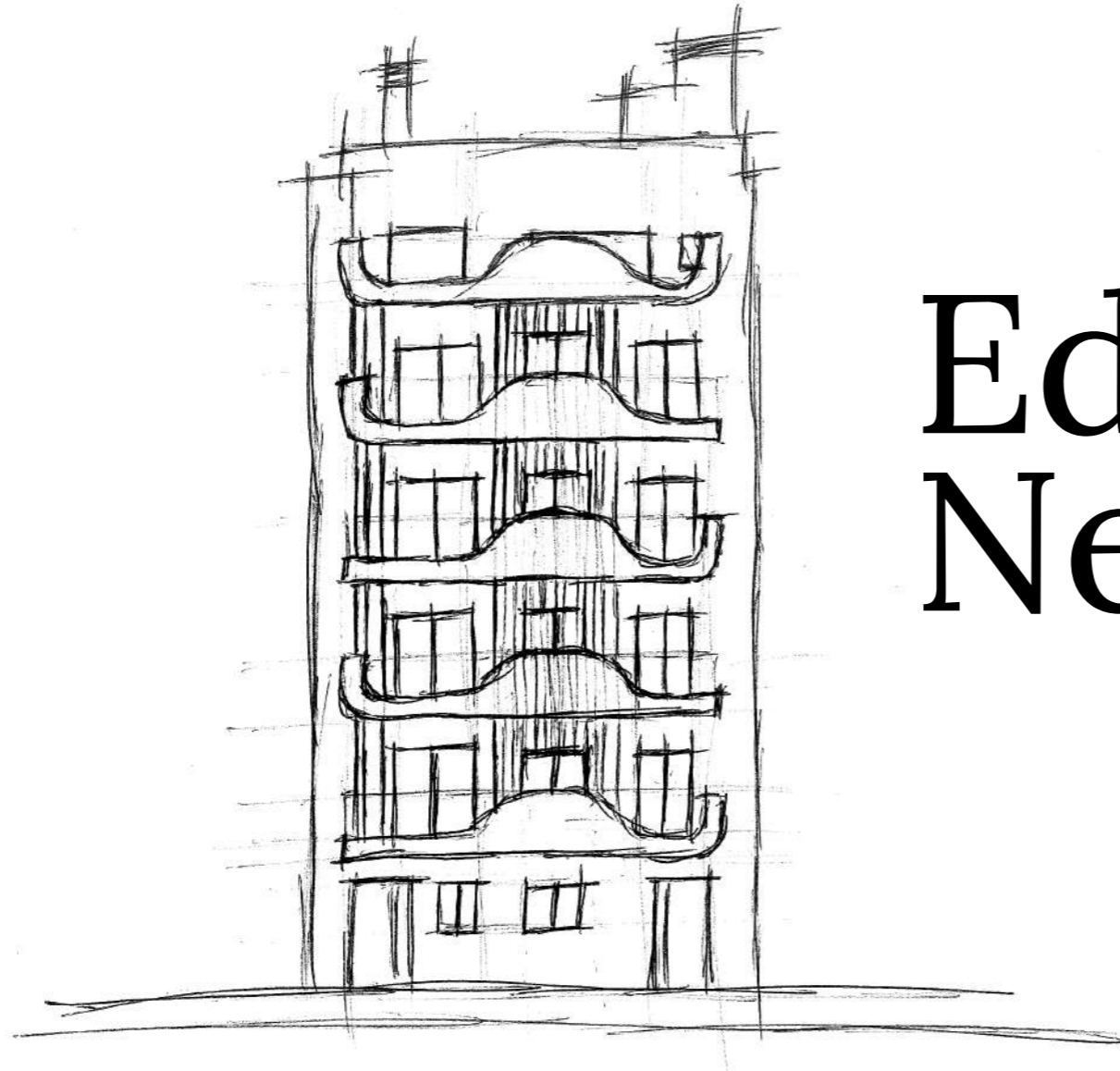


SINCE 2010

AGENCY



Edificio Neptuno

by COSTA BLANCA
bolig

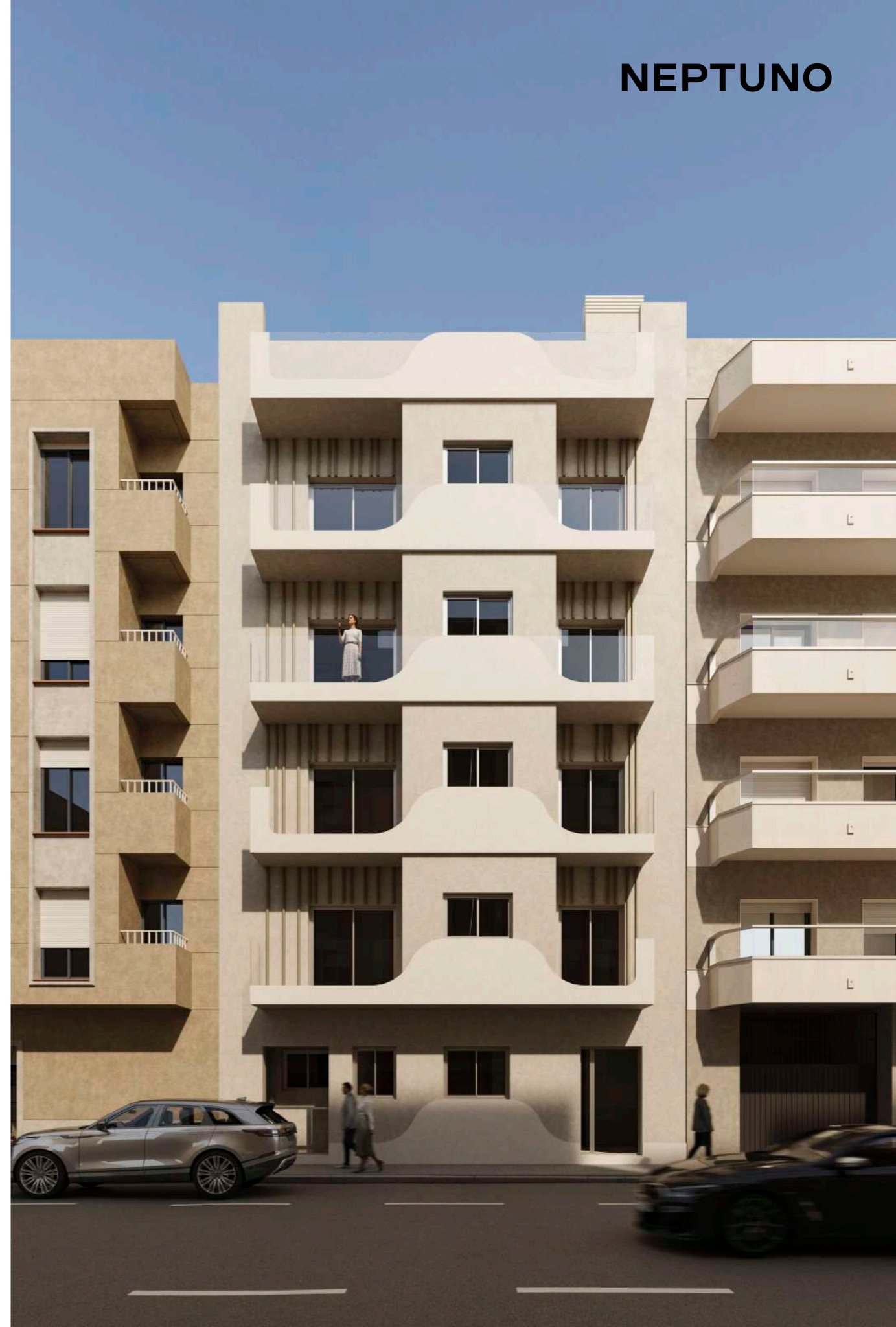
EDIFICIO

NEPTUNO

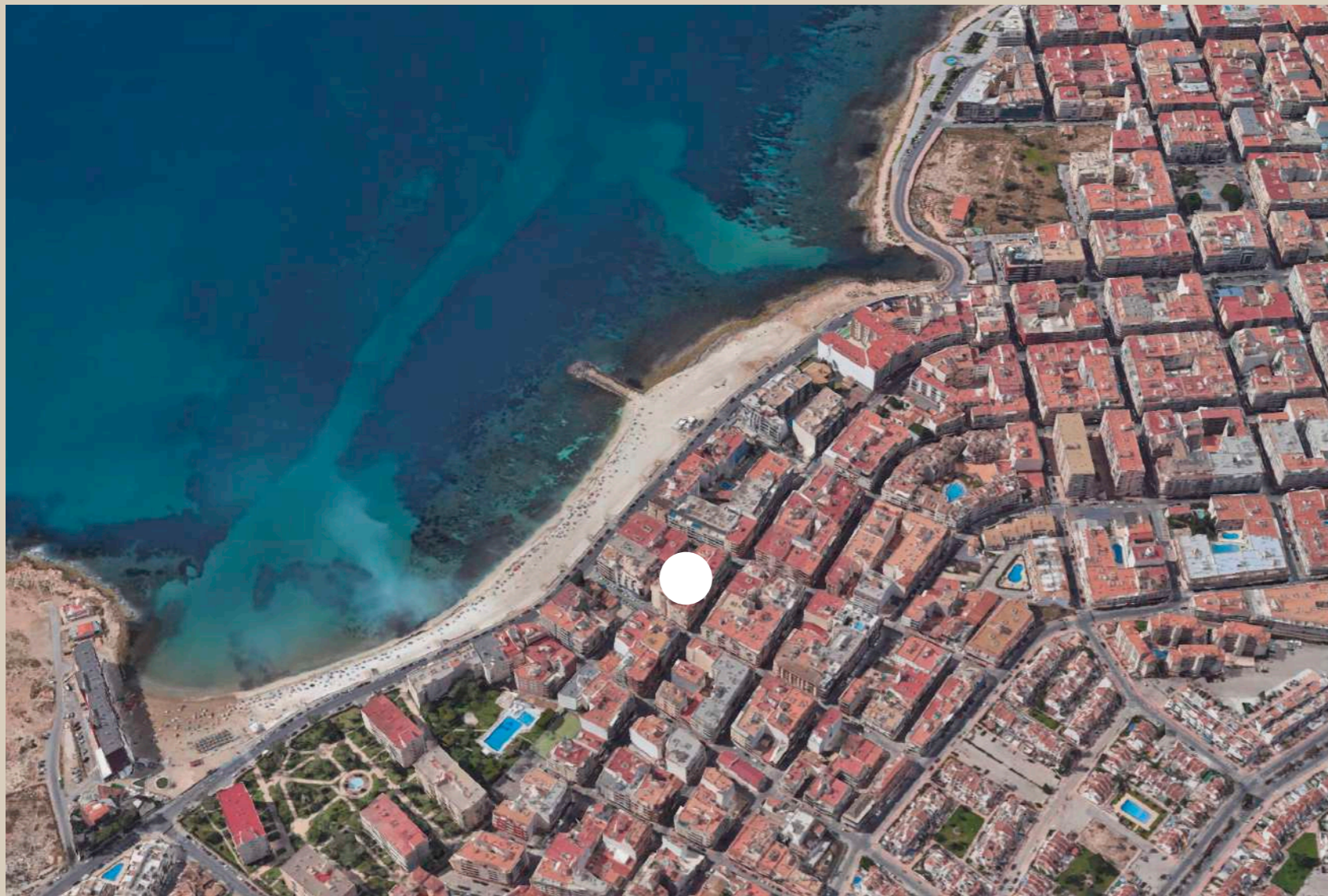
1-2 Bedroom Apartments in Torrevieja

Costa Blanca Bolig, real estate agency in Costa Blanca, has for several years work with sales of both new builds and resales on behalf of builders and private persons.

We are extremely happy to now present our exclusive new build projects. We are adding Edificio Neptuno to this adventure: a carefully designed apartment building with community pool and just 150m. away from the sea.



Where is Edificio Neptuno located?



The project is located in the central Calle Mar Báltico, in Torrevieja. Really close to all amenities and services.

The plot has a north west orientation.

The closest beach, Playa de los Locos in Torrevieja, is just 150m. away, a really short walk.

Edificio Neptuno benefits from a convenient location close to all amenities and, at the same time, the calmness of the beach.

[Check the location on Google Maps](#)



Penthouse

270.000€

BUILD
61,35M2

TERRACE
31,13M2

BEDROOMS
2

BATHROOMS
1

COMMUNITY
POOL

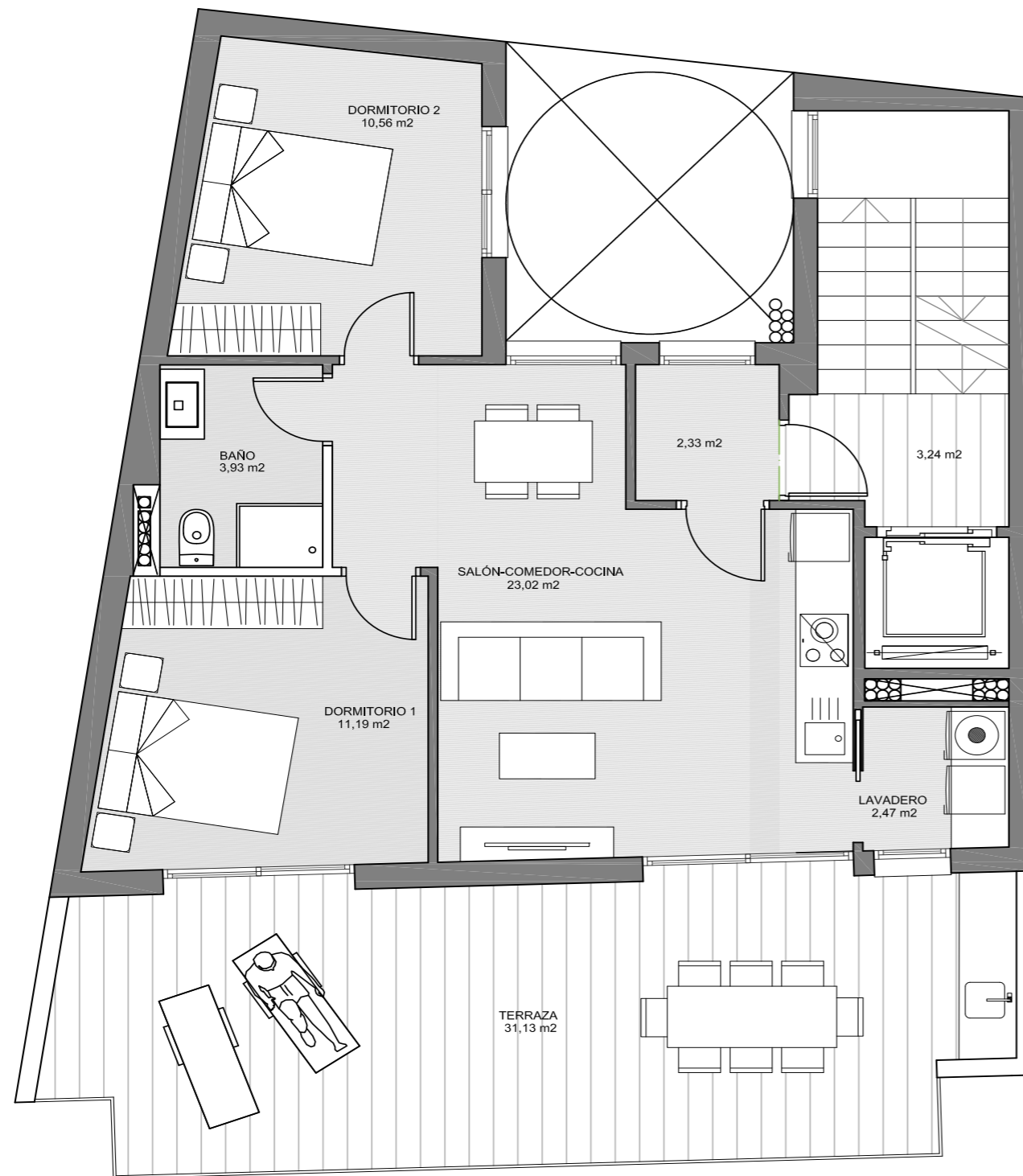
COMPLETION DATE: 9/25

The penthouse features a modern minimalist style, characterized by clean lines, elegance, and a light, neutral color scheme. It features 2 bedrooms, 1 bathroom and a spacious terrace.

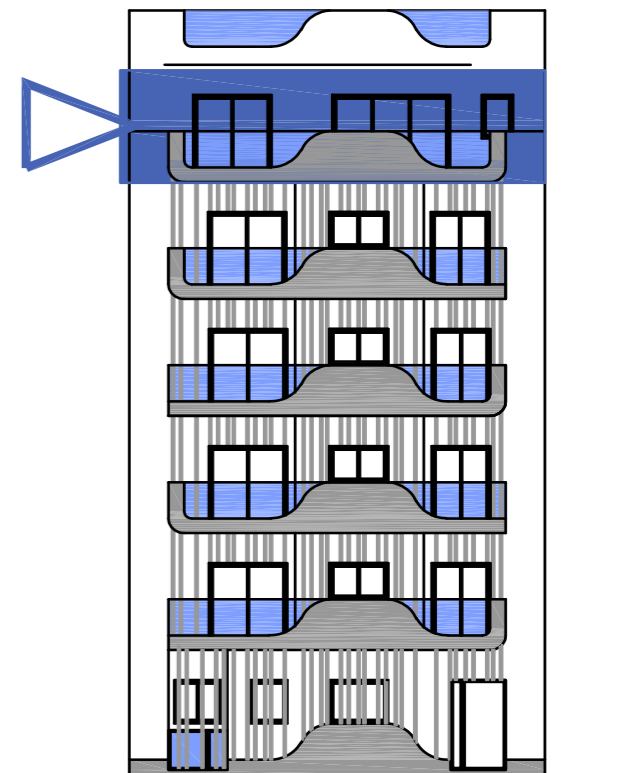
The bedrooms include built-in wardrobes and the master room has access to the terrace. The living room has an open plan and is connected to the elegant kitchen. There is also access to the terrace from the living room. Next to the kitchen, you'll find a laundry room.

The spacious terrace, with a 31,13sqm surface, highlights openness and harmony with the outdoor environment.

PENTHOUSE



C/ Mar Báltico



*The floorplans and images displayed on this document are purely informational and have no contractual value.

EDIFICIO

NEPTUNO

6

Penthouse →



**BUILD
64,68M2****TERRACE
1,80M2****PATIO
9,57M2****BEDROOMS
2****BATHROOMS
1****COMMUNITY
POOL****COMPLETION DATE: 9/25**

Ground Floor

199.000€

The ground floor apartment features a modern minimalist style, characterized by clean lines, elegance, and a light, neutral color scheme. It features 2 bedrooms, 1 bathroom and a spacious terrace.

The bedrooms include built-in wardrobes and the master room has access to the patio. The living room features an open plan design and is connected to the spacious kitchen.

The ground floor units has its own access from the street, with an storage room located in the entrance.

EDIFICIO

NEPTUNO



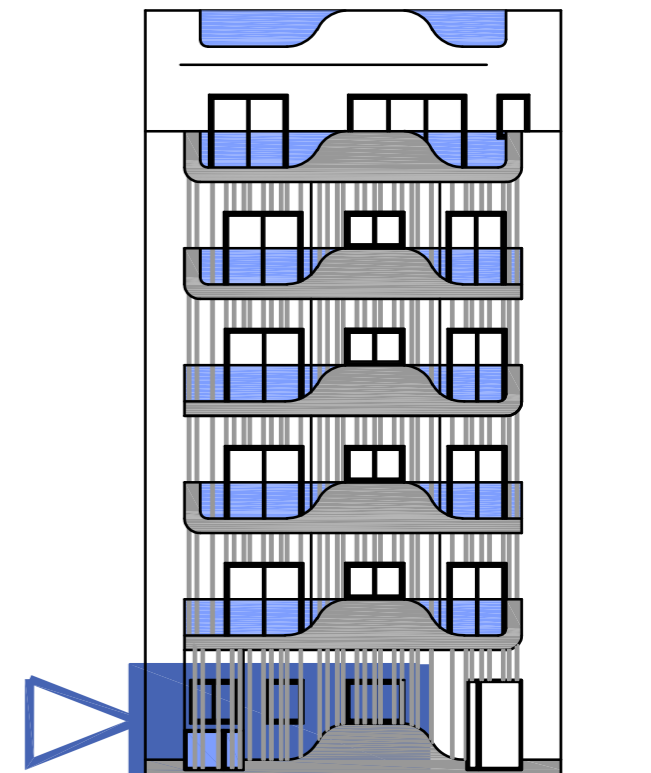
8

← Ground Floor Apartment

GROUND FLOOR



C/ Mar Báltico



*The floorplans and images displayed on this document are purely informational and have no contractual value.

EDIFICIO

NEPTUNO

Apartment Type A

From 166.100€

BUILD
47,10M2

TERRACE
2,90M2

BEDROOMS
1

BATHROOMS
1

COMMUNITY
POOL

COMPLETION DATE: 9/25

The Type A apartments feature a modern minimalist style, characterized by clean lines, elegance, and a light, neutral color scheme. They feature 1 bedroom, 1 bathroom and a balcony.

The bedroom includes a built-in wardrobe. The living room features an open plan design and is connected to the spacious kitchen. There is also access to the balcony from the living room.

There are 4 Type A units in Edificio Neptuno, in floors 1 to 4. Starting at 166.100€ and up to 172.200,00€.

EDIFICIO

NEPTUNO



↑ Type A Apartment

TYPE A



*The floorplans and images displayed on this document are purely informational and have no contractual value.

EDIFICIO

NEPTUNO

Apartment Type B

From 162.000€

BUILD

59,87M2

TERRACE

1,88M2

BEDROOMS

1

BATHROOMS

1

COMMUNITY

POOL

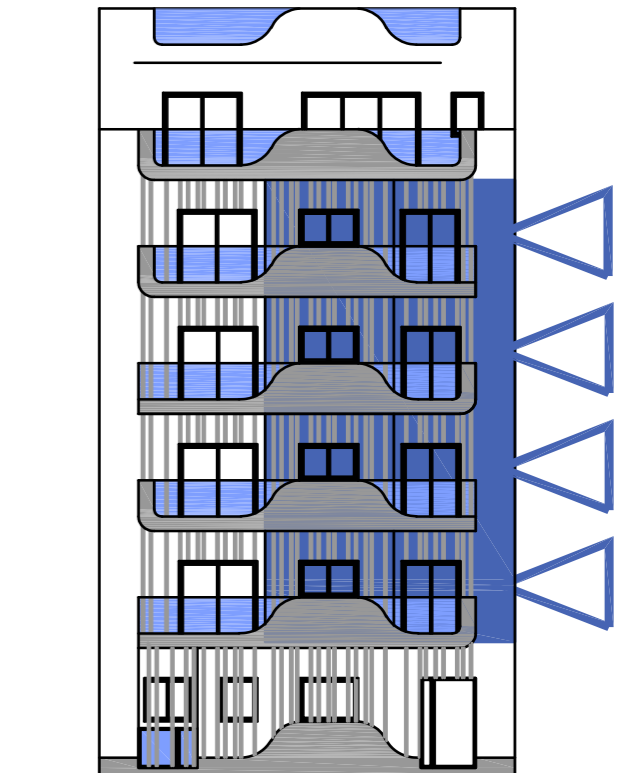
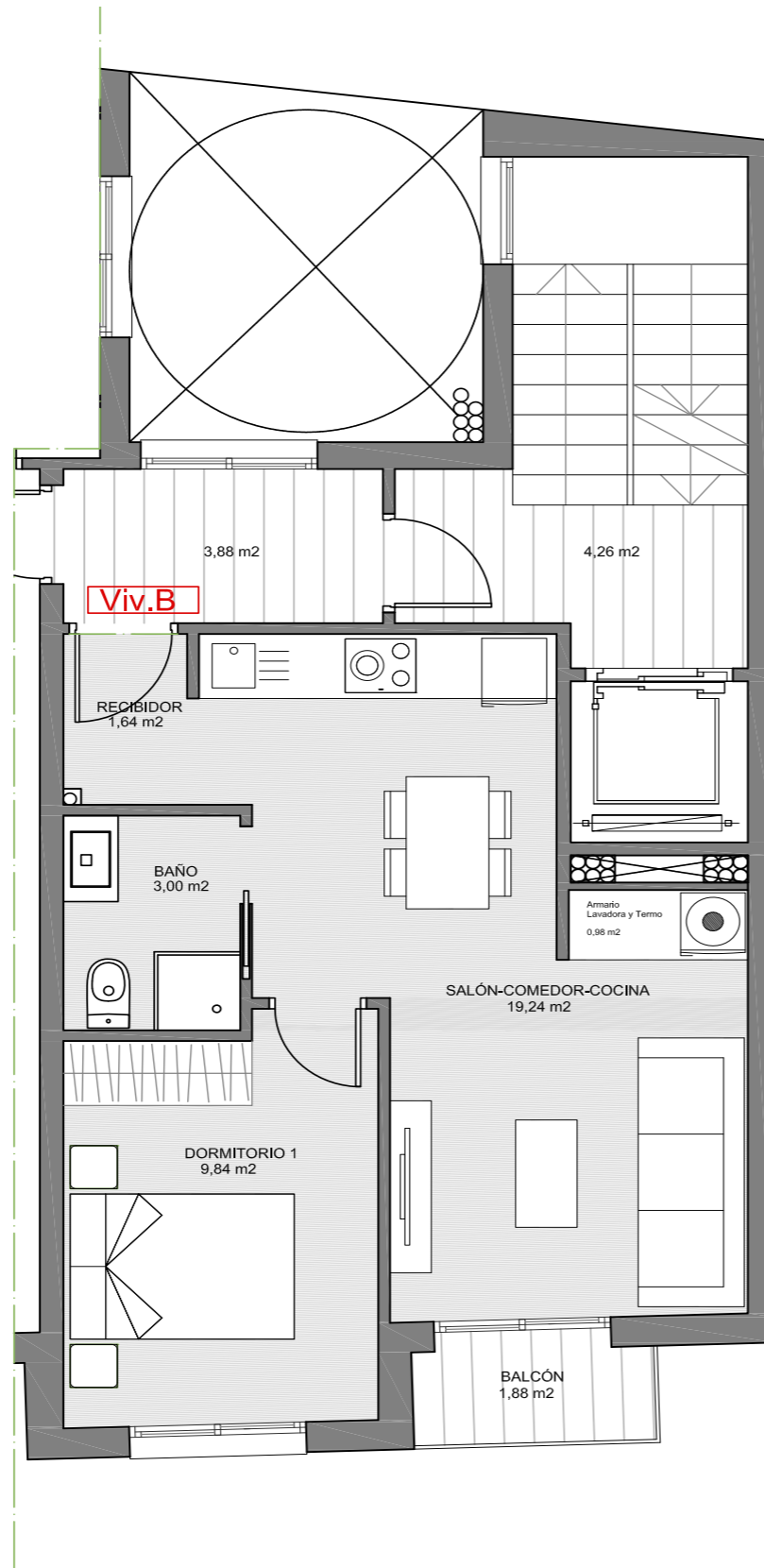
COMPLETION DATE: 9/25

The Type B apartments feature a modern minimalist style, characterized by clean lines, elegance, and a light, neutral color scheme. They feature 1 bedroom, 1 bathroom and a balcony.

The bedroom includes a built-in wardrobe. The living room features an open plan design and is connected to the spacious kitchen. There is also access to the balcony from the living room.

There are 4 Type B units in Edificio Neptuno, in floors 1 to 4. Starting at 162.000€ and up to 168.100,00€.

TYPE B



*The floorplans and images displayed on this document are purely informational and have no contractual value.



EDIFICIO

NEPTUNO

