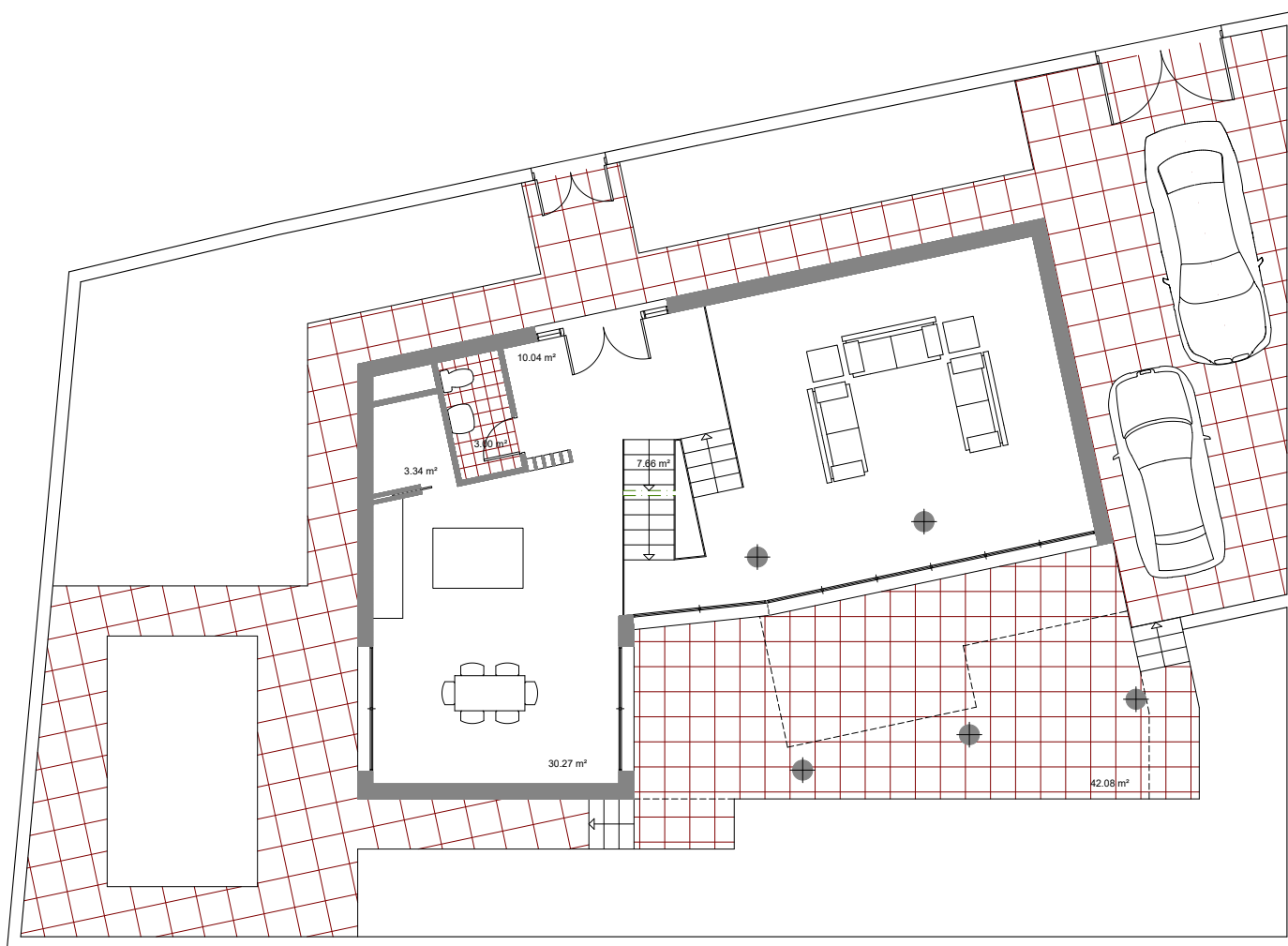


VILLAS EN ESTEPONA
PARCELA 34 - ESTEPONA GOLF
VIVIENDA 01

PLANTA SÓTANO

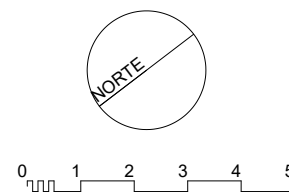
SUPERFICIE COMPUTABLE = 0.00 m²
 SUPERFICIE OCUPADA = 152.68 m²
 SUPERFICIE ÚTIL CERRADA = 138.23 m²
 SUPERFICIE TERRAZA = 0.00 m²

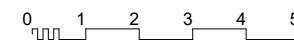
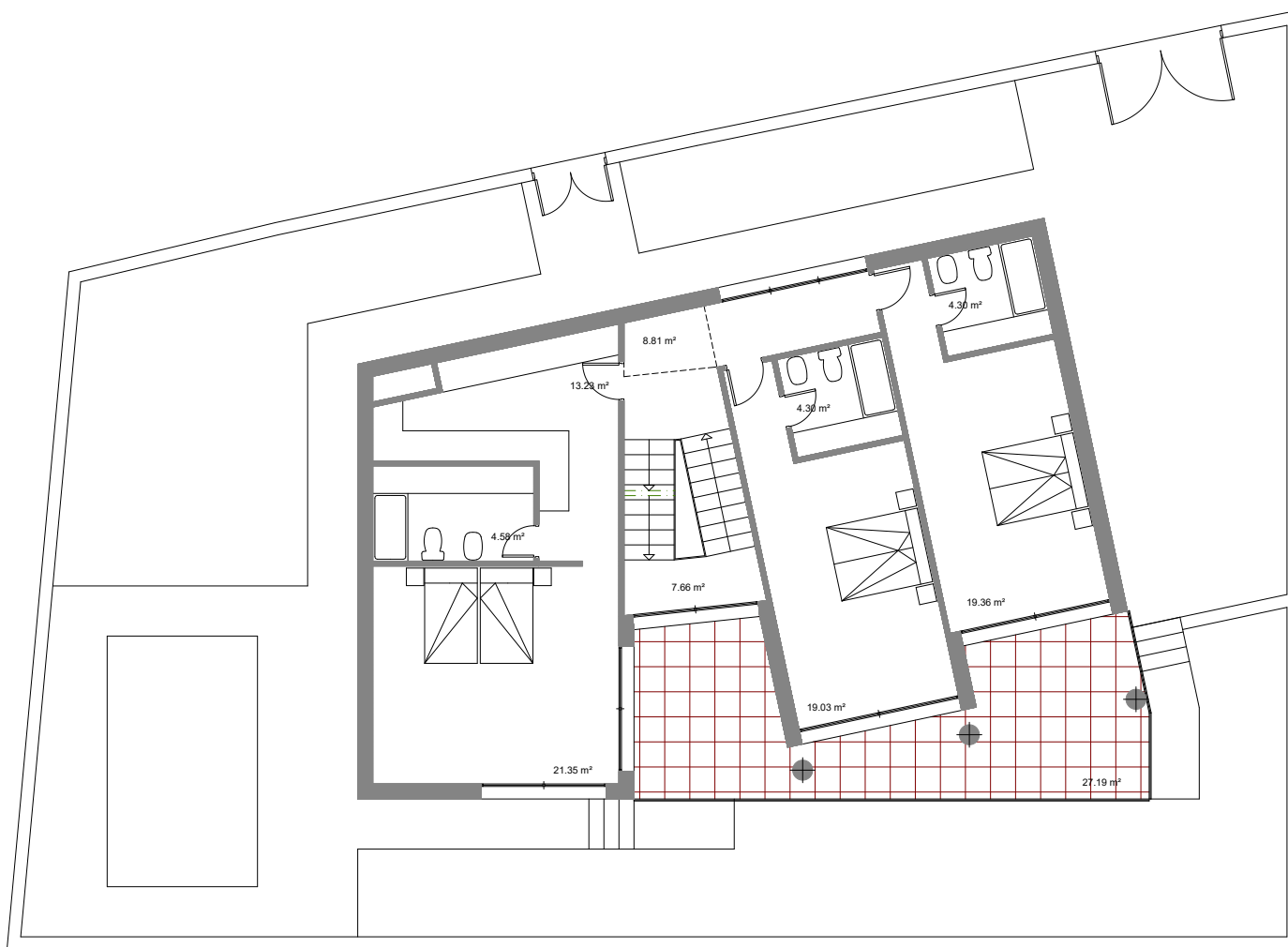


VILLAS EN ESTEPONA
PARCELA 34 - ESTEPONA GOLF
VIVIENDA 01

PLANTA BAJA

SUPERFICIE COMPUTABLE = 110.60 m²
 SUPERFICIE OCUPADA = 152.68 m²
 SUPERFICIE ÚTIL CERRADA = 98.64 m²
 SUPERFICIE TERRAZA = 42.08 m²





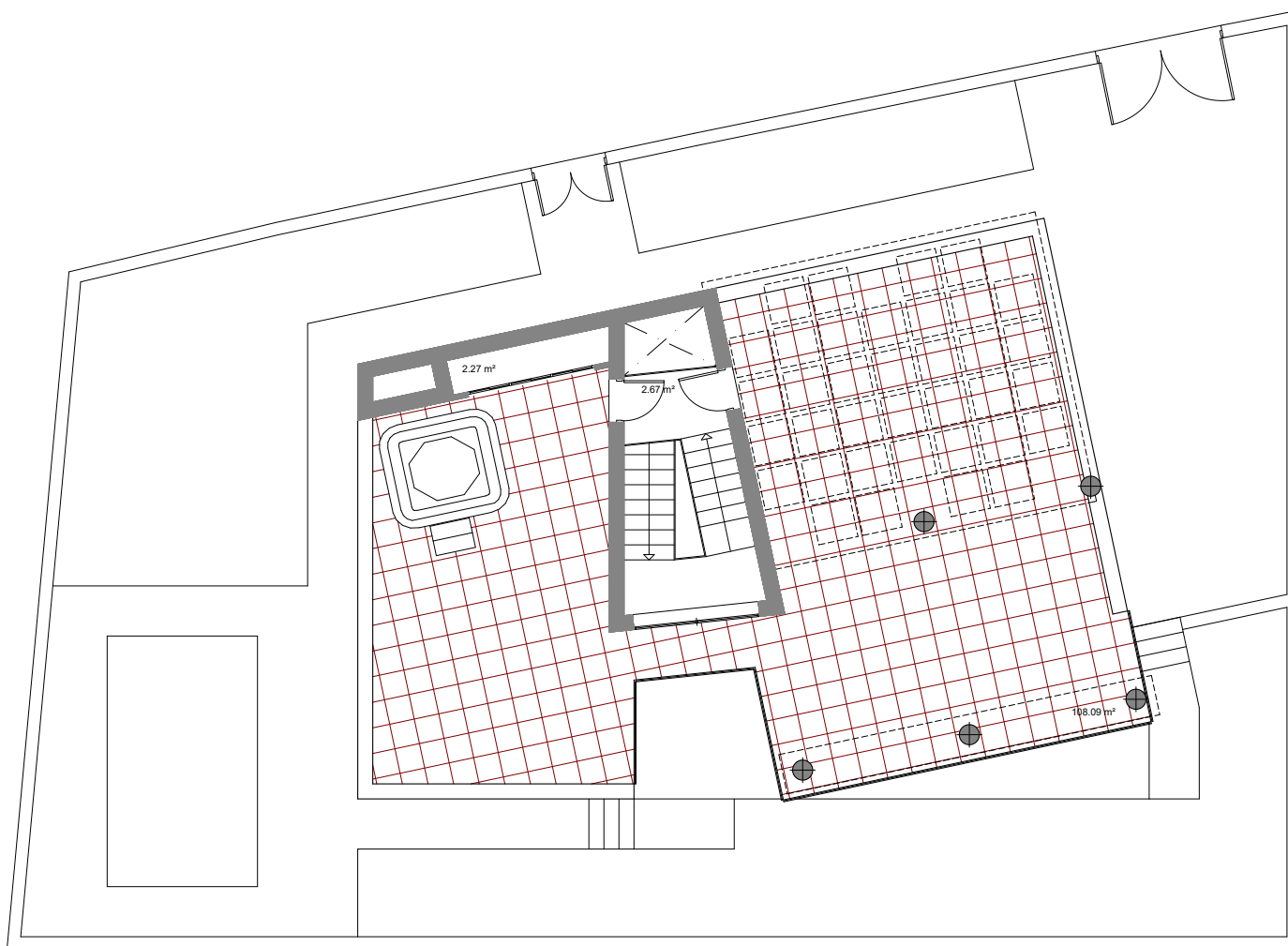
VILLAS EN ESTEPONA

PARCELA 34 - ESTEPONA GOLF

VIVIENDA 01

PLANTA ALTA

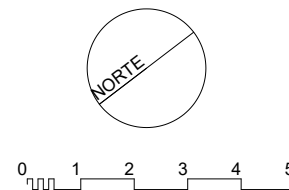
SUPERFICIE COMPUTABLE = 125.49 m²
 SUPERFICIE OCUPADA = 152.68 m²
 SUPERFICIE ÚTIL CERRADA = 102.62 m²
 SUPERFICIE TERRAZA = 27.19 m²

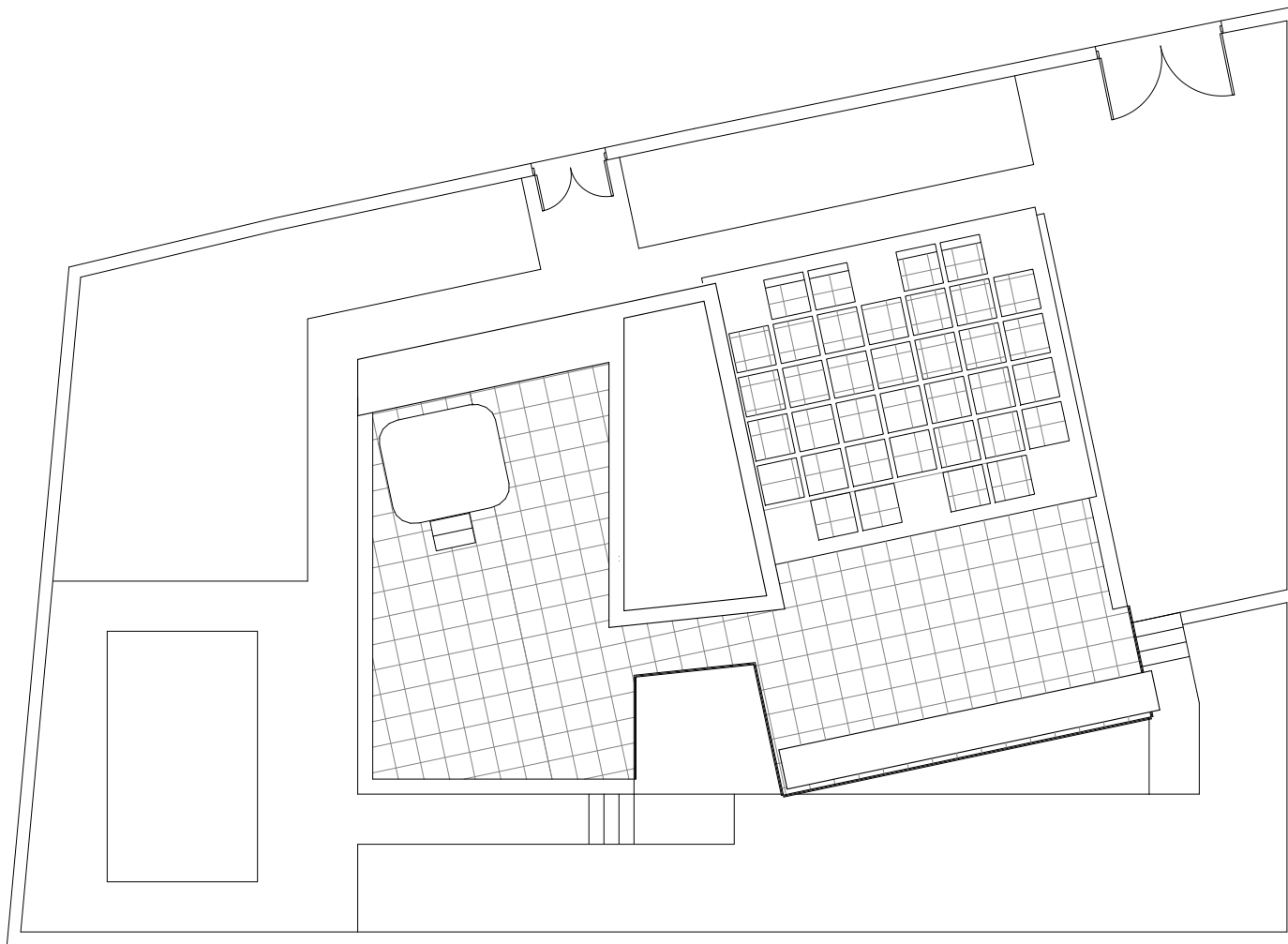


VILLAS EN ESTEPONA
PARCELA 34 - ESTEPONA GOLF
VIVIENDA 01

"SOLARIUM"

SUPERFICIE COMPUTABLE = 22.40 m²
 SUPERFICIE OCUPADA = 0.00 m²
 SUPERFICIE ÚTIL CERRADA = 4.94 m²
 SUPERFICIE TERRAZA = 108.09 m²



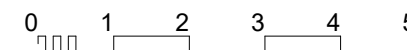
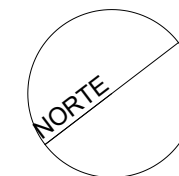
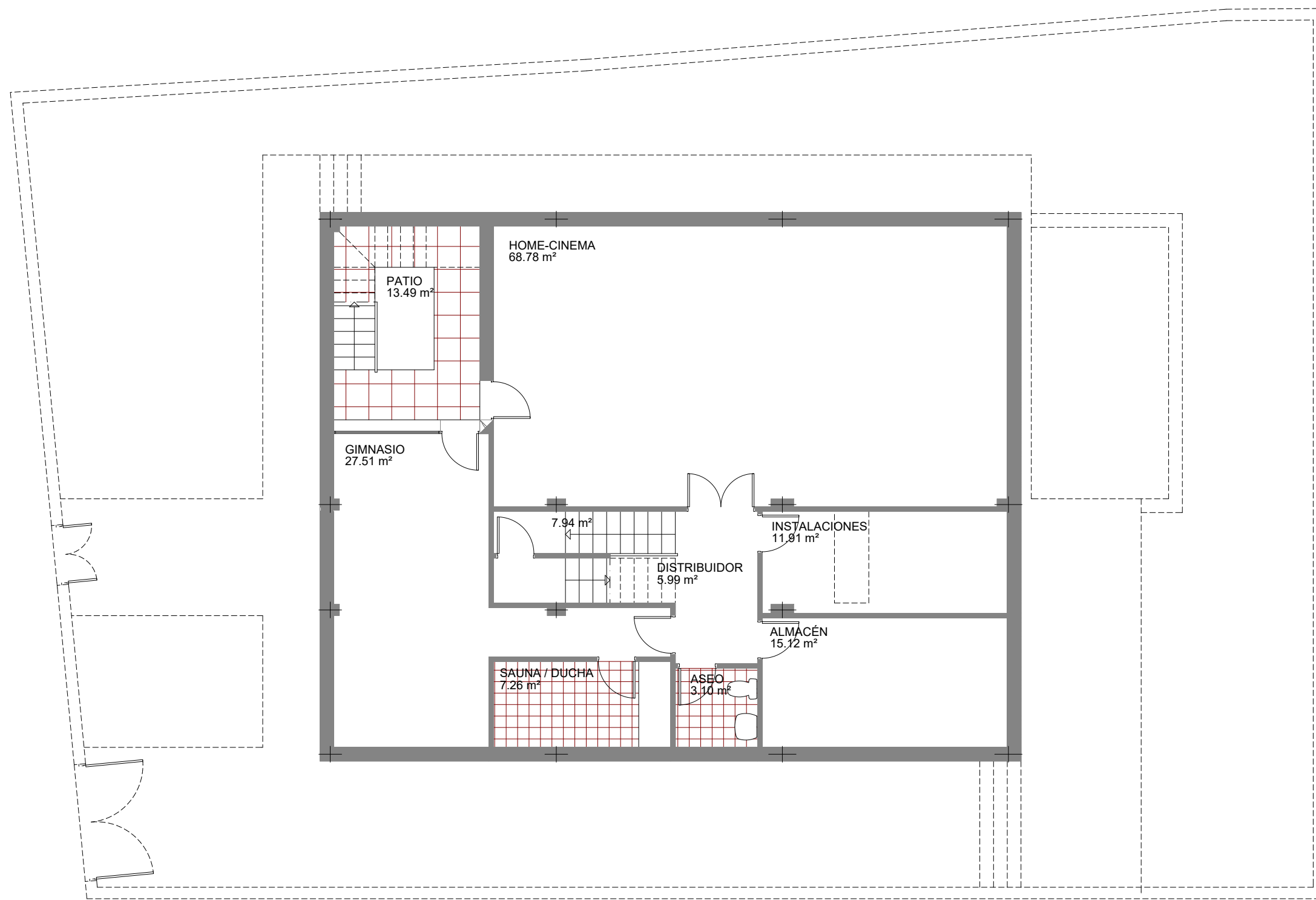


VILLAS EN ESTEPONA
PARCELA 34 - ESTEPONA GOLF
VIVIENDA 01

CUBIERTA

SUPERFICIE COMPUTABLE = 0.00 m²
SUPERFICIE OCUPADA = 0.00 m²
SUPERFICIE ÚTIL CERRADA = 0.00 m²
SUPERFICIE TERRAZA = 0.00 m²



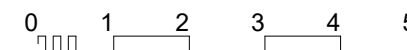
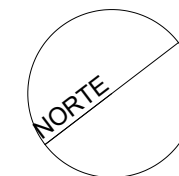
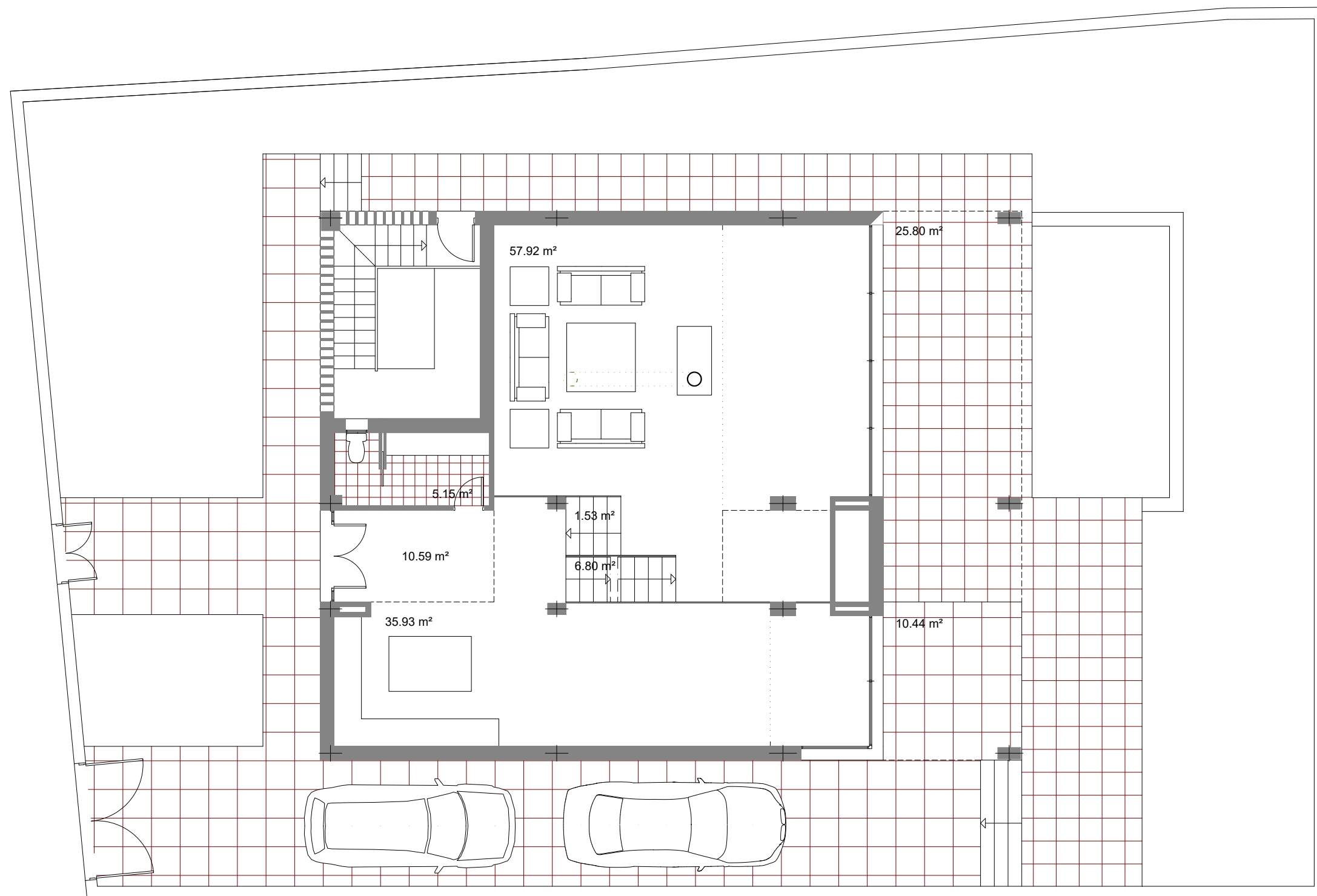


VILLAS EN ESTEPONA
PARCELA 34 - ESTEPONA GOLF
VIVIENDA 05

PLANTA SÓTANO

SUPERFICIE CONSTRUIDA = 183.47 m²

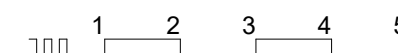
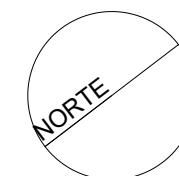
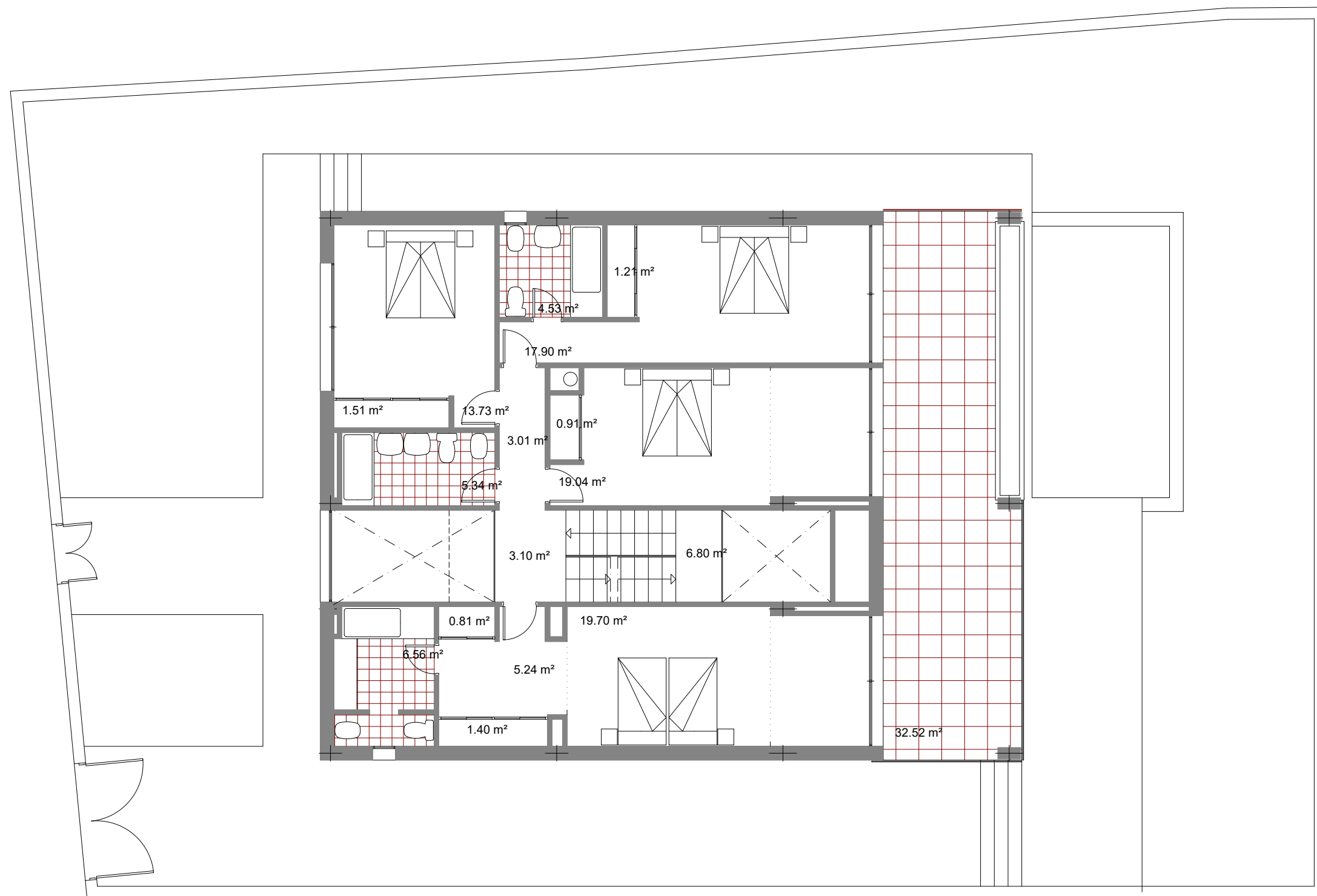
SUPERFICIE ÚTIL CERRADA = 147.61 m²
 SUPERFICIE PORCHE / PATIO = 13.49 m²



VILLAS EN ESTEPONA
PARCELA 34 - ESTEPONA GOLF
VIVIENDA 05

PLANTA BAJA

SUPERFICIE CONSTRUIDA = 131.41 m²
 SUPERFICIE OCUPADA = 183.47 m²
 SUPERFICIE ÚTIL CERRADA = 110.47 m²
 SUPERFICIE PORCHE / PATIO = 36.24 m²

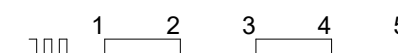
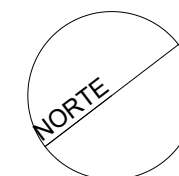
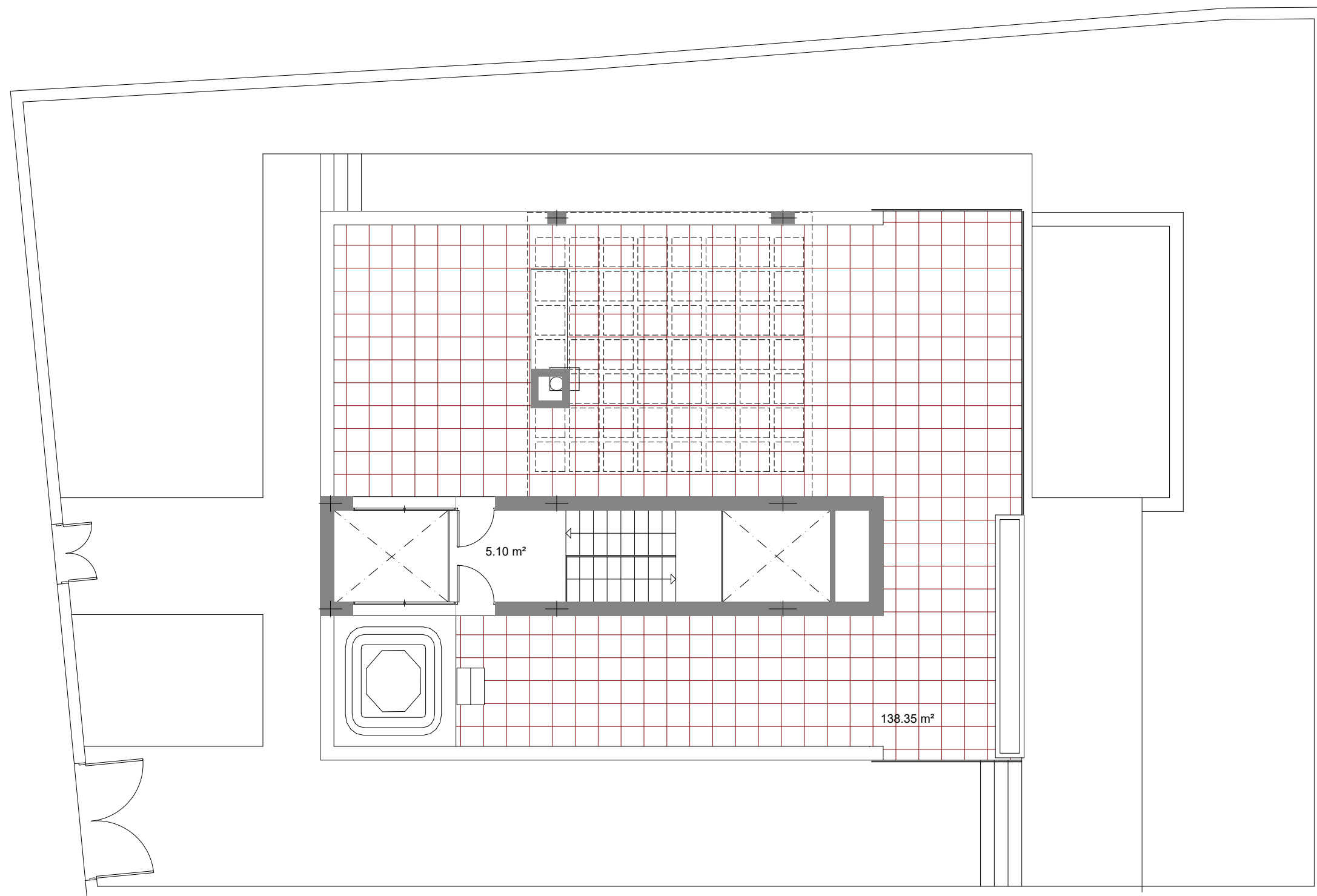


VILLAS EN ESTEPONA
PARCELA 34 - ESTEPONA GOLF
VIVIENDA 05

PLANTA ALTA

SUPERFICIE COMPUTABLE = 140.24 m²

SUPERFICIE ÚTIL CERRADA = 110.79 m²
 SUPERFICIE PORCHE / PATIO = 32.55 m²



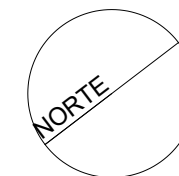
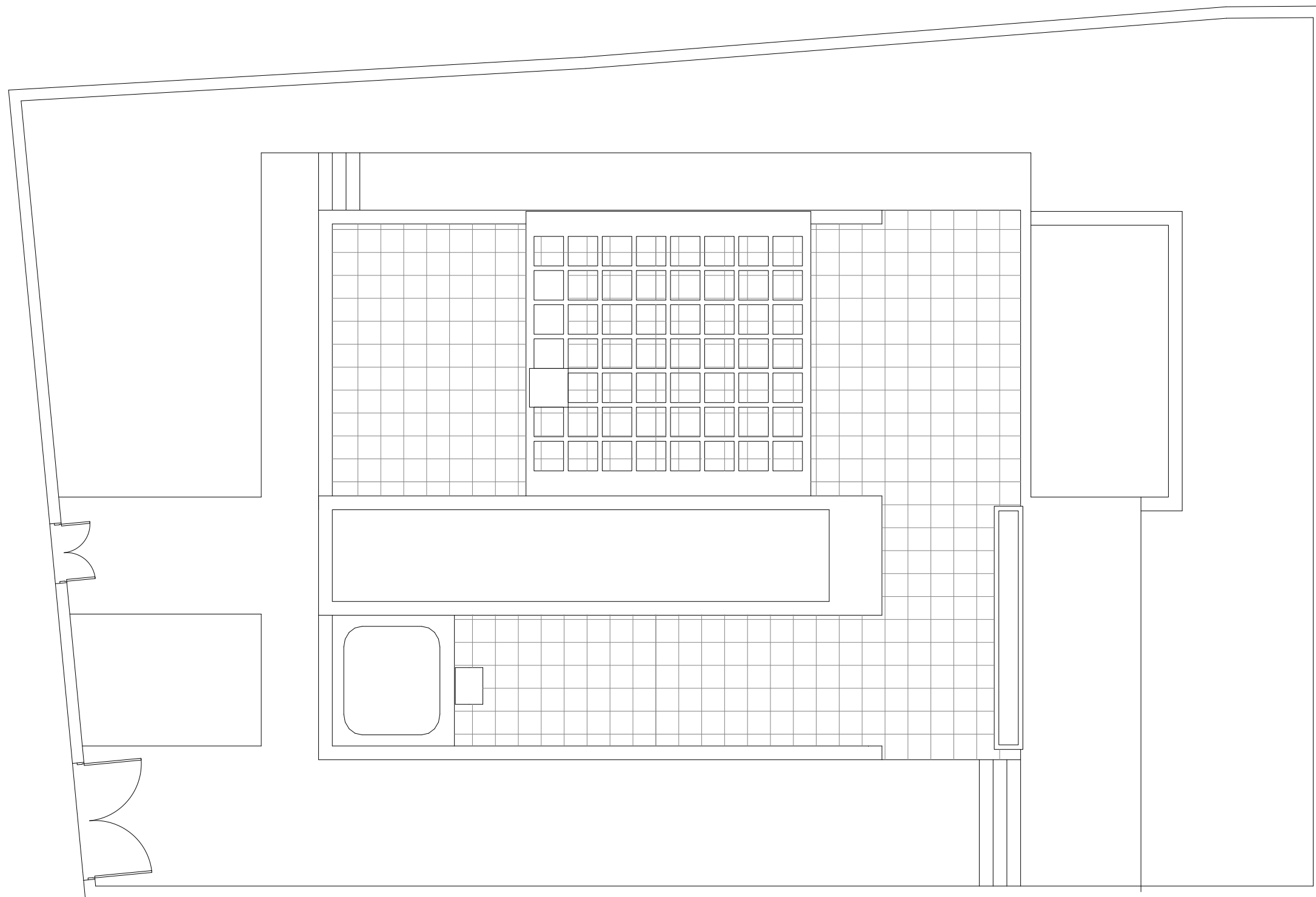
VILLAS EN ESTEPONA
PARCELA 34 - ESTEPONA GOLF
VIVIENDA 05

PLANTA ALTA

SUPERFICIE COMPUTABLE = 22.24 m²

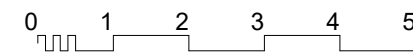
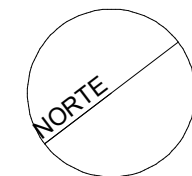
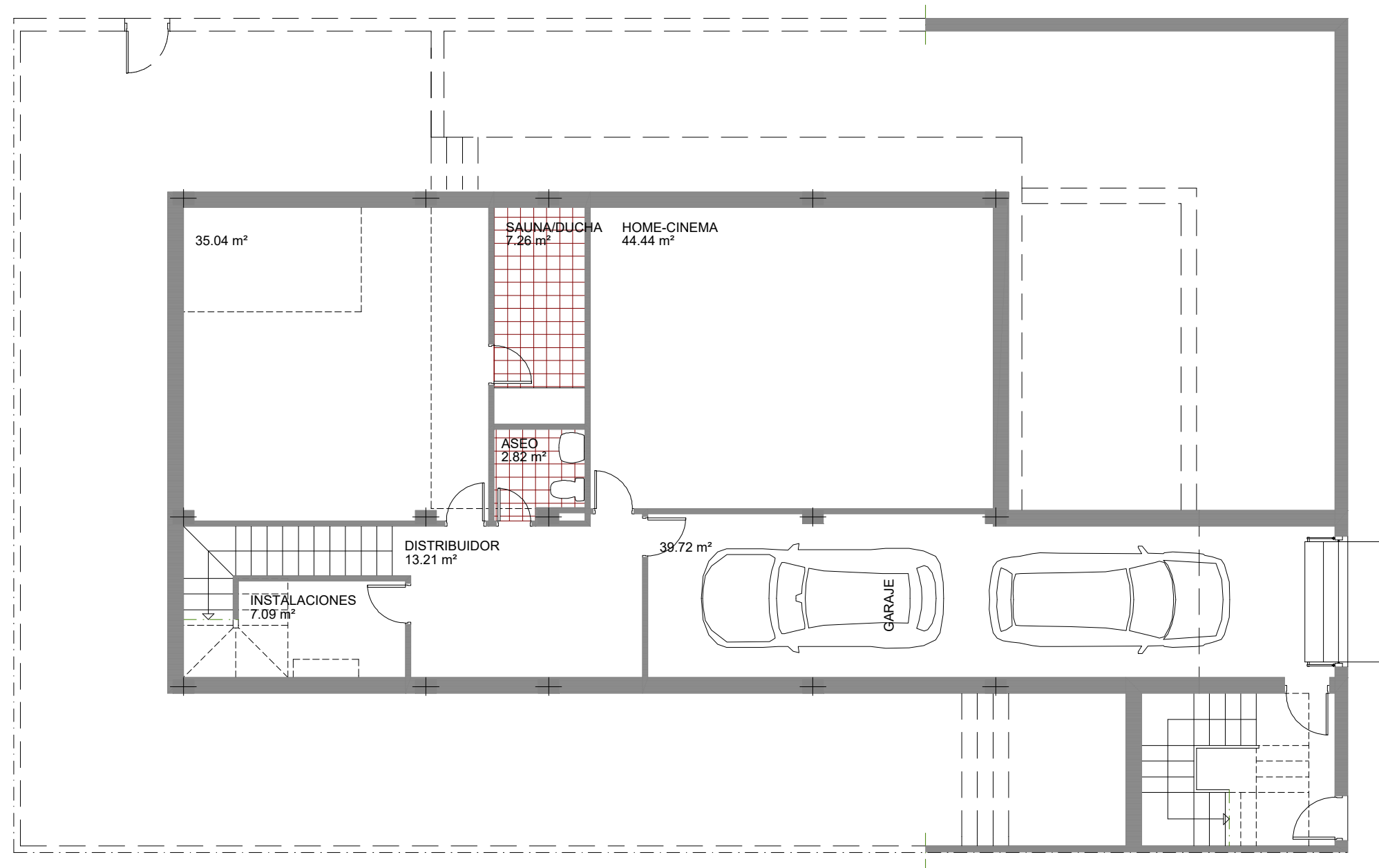
SUPERFICIE ÚTIL CERRADA = 5.10 m²

SUPERFICIE PORCHE / TERRAZA = 138.35 m²



VILLAS EN ESTEPONA
PARCELA 34 - ESTEPONA GOLF
VIVIENDA 05

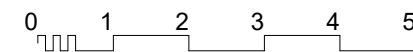
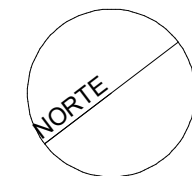
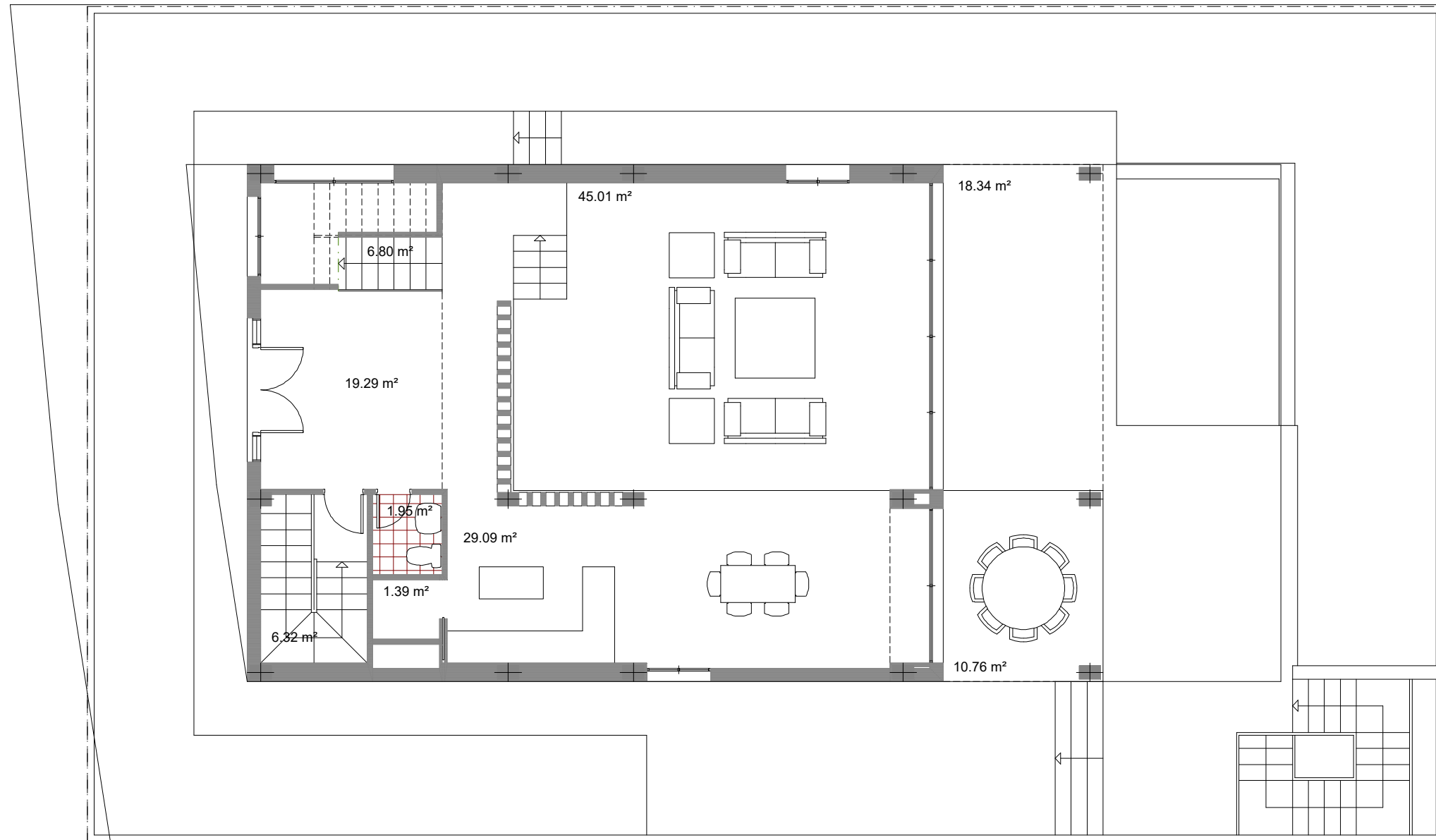
CUBIERTA



VILLAS EN ESTEPONA
PARCELA 34 - ESTEPONA GOLF
VIVIENDAS 07-08-09

PLANTA SÓTANO

SUPERFICIE COMPUTABLE = 0.00 m²
 SUPERFICIE OCUPADA = 177.30 m²
 SUPERFICIE ÚTIL CERRADA = 149.58 m²
 SUPERFICIE PORCHE / PATIO = 0.00 m²



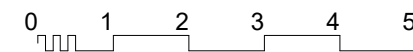
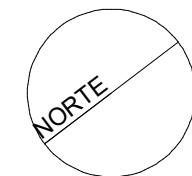
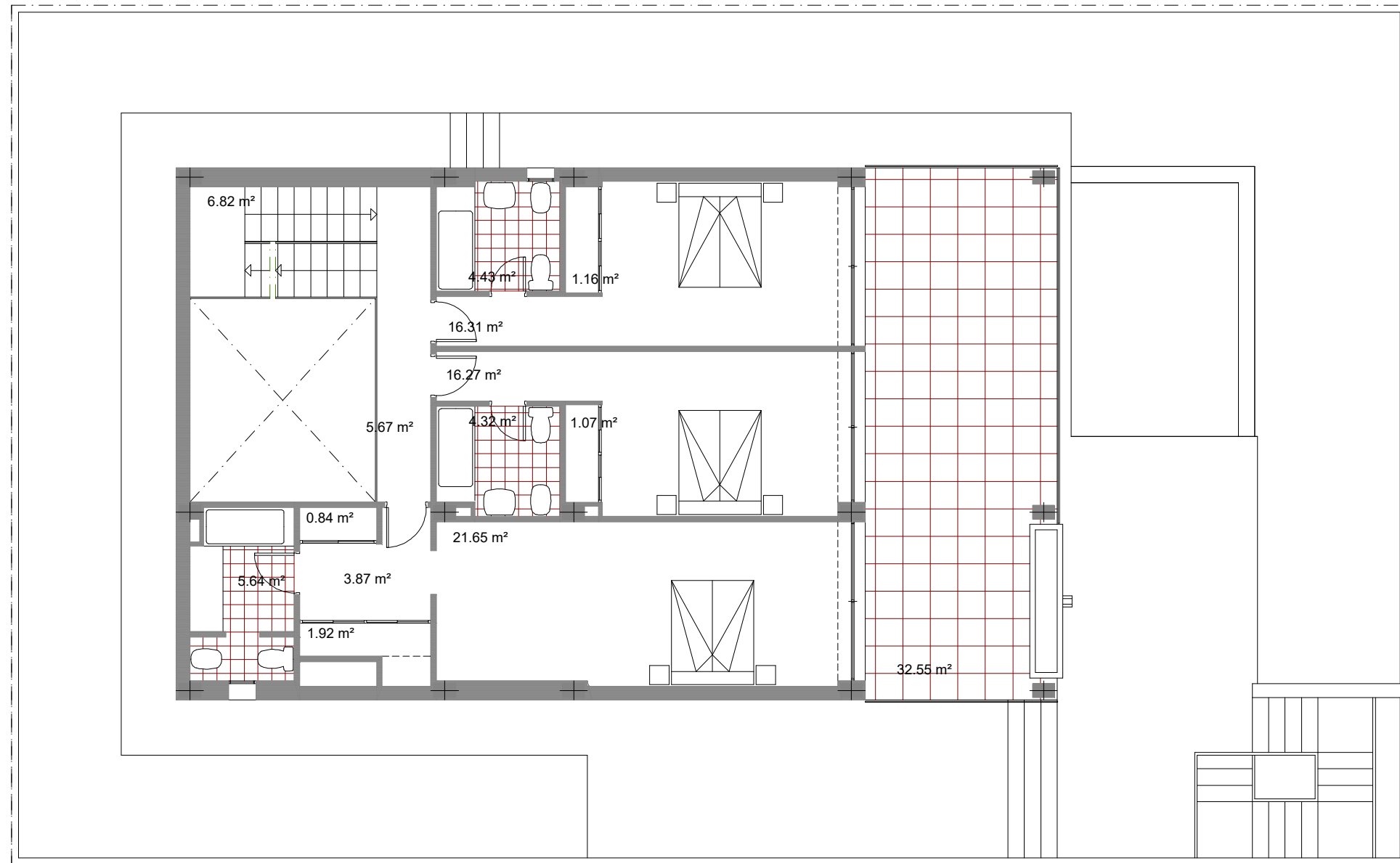
VILLAS EN ESTEPONA

PARCELA 34 - ESTEPONA GOLF

VIVIENDAS 07-08-09

PLANTA BAJA

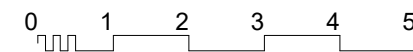
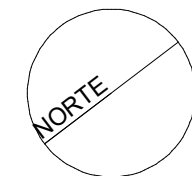
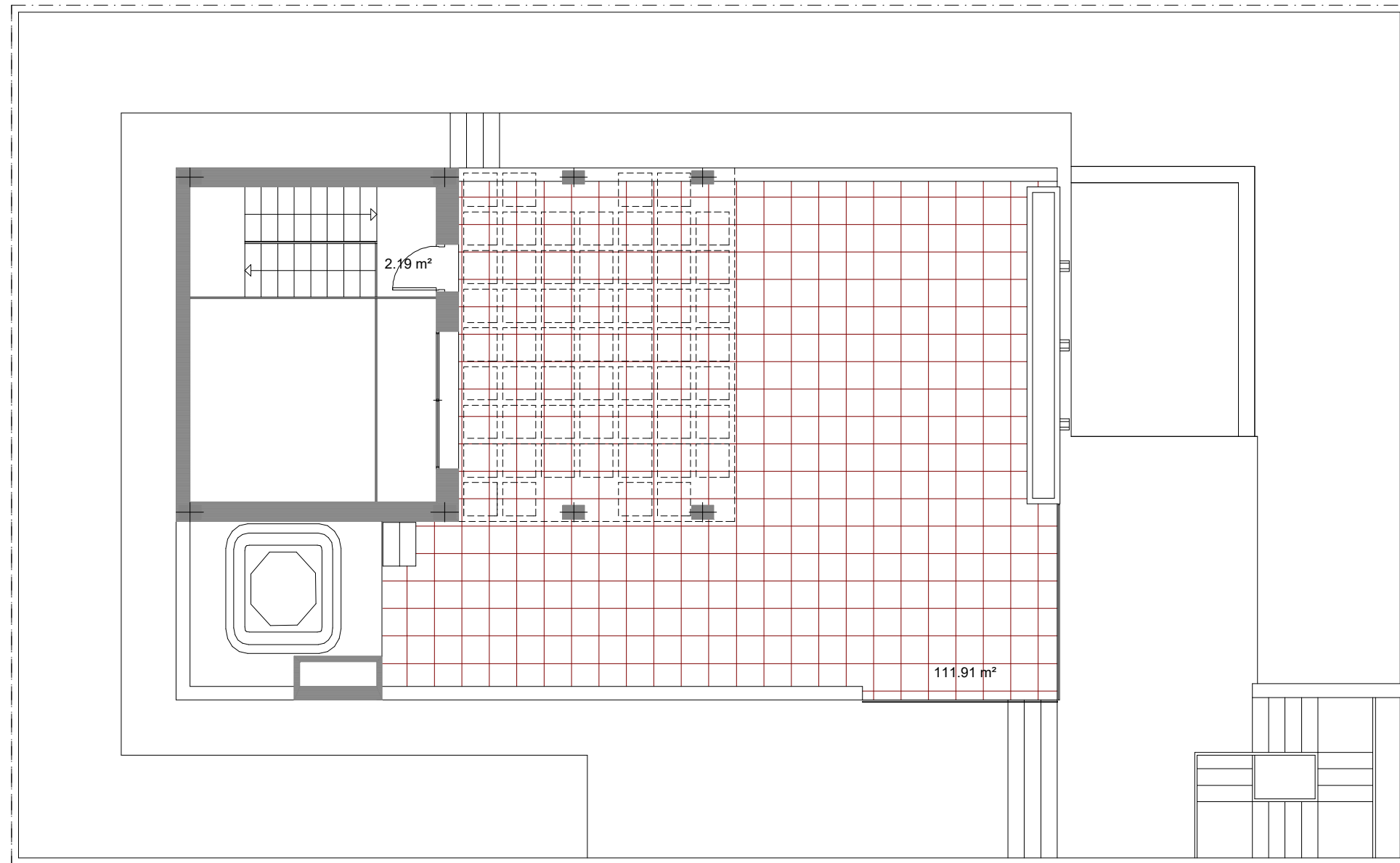
SUPERFICIE COMPUTABLE = 126.58 m²
 SUPERFICIE OCUPADA = 155.68 m²
 SUPERFICIE ÚTIL CERRADA = 109.85 m²
 SUPERFICIE PORCHE / PATIO = 29.10 m²



VILLAS EN ESTEPONA
PARCELA 34 - ESTEPONA GOLF
VIVIENDAS 07-08-09

PLANTA ALTA

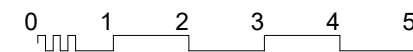
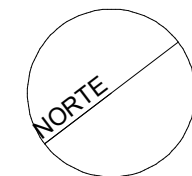
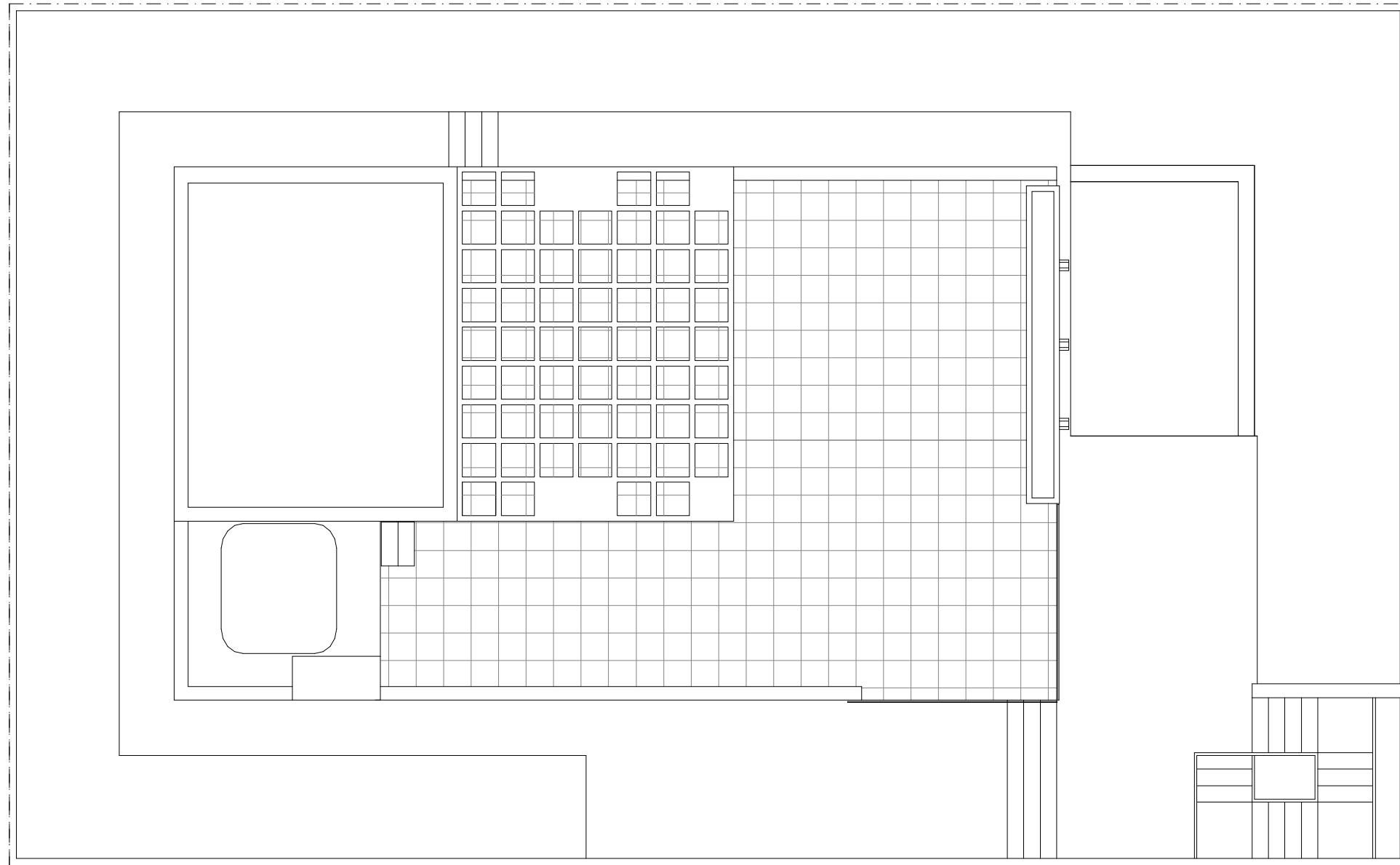
SUPERFICIE COMPUTABLE = 109.18 m²
 SUPERFICIE OCUPADA = 143.13 m²
 SUPERFICIE ÚTIL CERRADA = 89.97 m²
 SUPERFICIE PORCHE / PATIO = 32.55 m²



VILLAS EN ESTEPONA
PARCELA 34 - ESTEPONA GOLF
VIVIENDAS 07-08-09

SOLARIUM

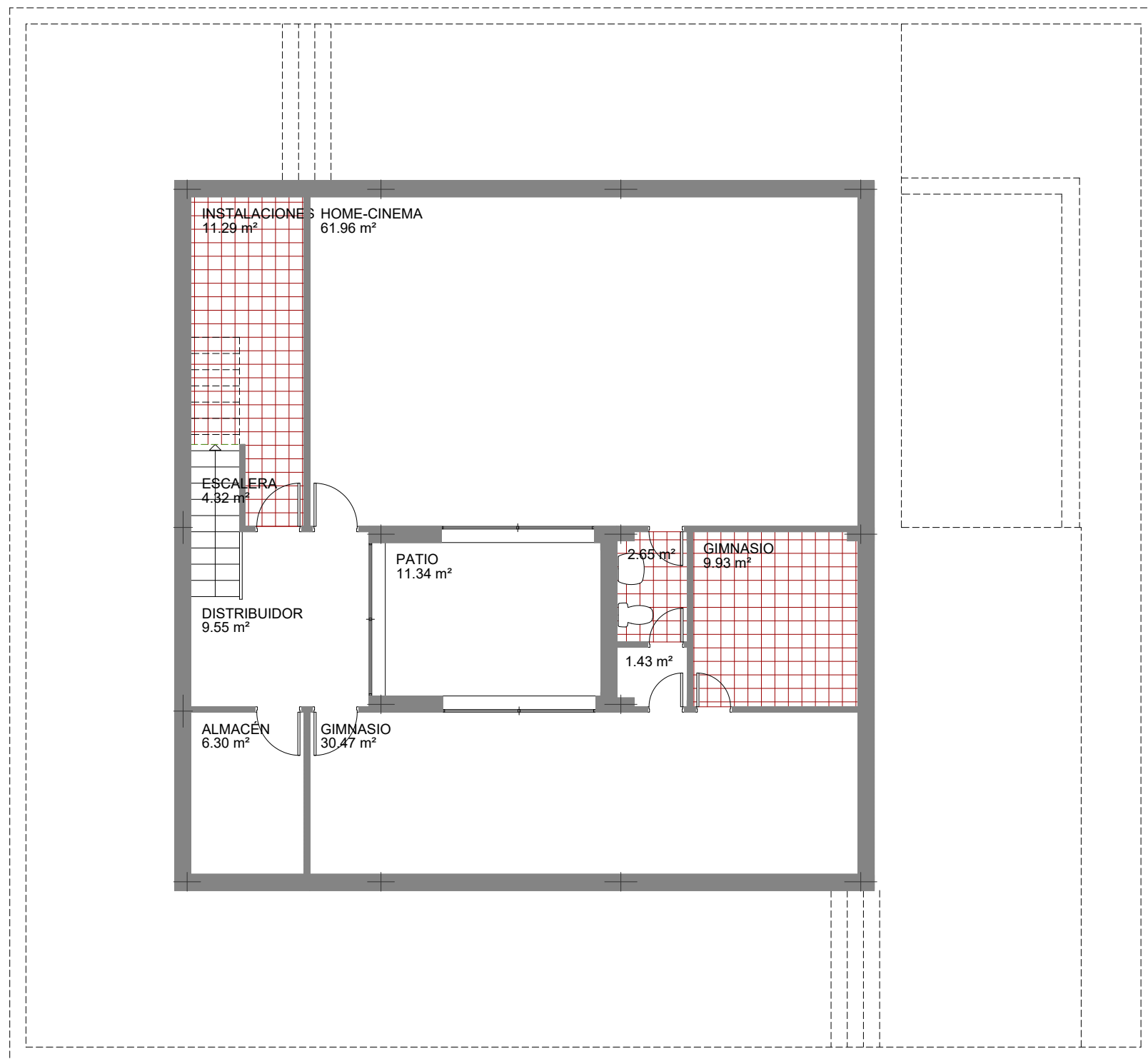
SUPERFICIE COMPUTABLE = 0.00 m²
 SUPERFICIE OCUPADA = 16.44 m²
 SUPERFICIE ÚTIL CERRADA = 2.19 m²
 SUPERFICIE SOLARIUM = 111.91 m²



VILLAS EN ESTEPONA
PARCELA 34 - ESTEPONA GOLF
VIVIENDAS 07-08-09

CUBIERTA

SUPERFICIE COMPUTABLE = 0.00 m²
SUPERFICIE OCUPADA = 0.00 m²
SUPERFICIE ÚTIL CERRADA = 0.00 m²
SUPERFICIE PORCHE / PATIO = 0.00 m²



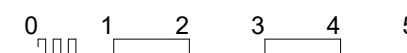
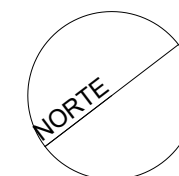
VILLAS EN ESTEPONA

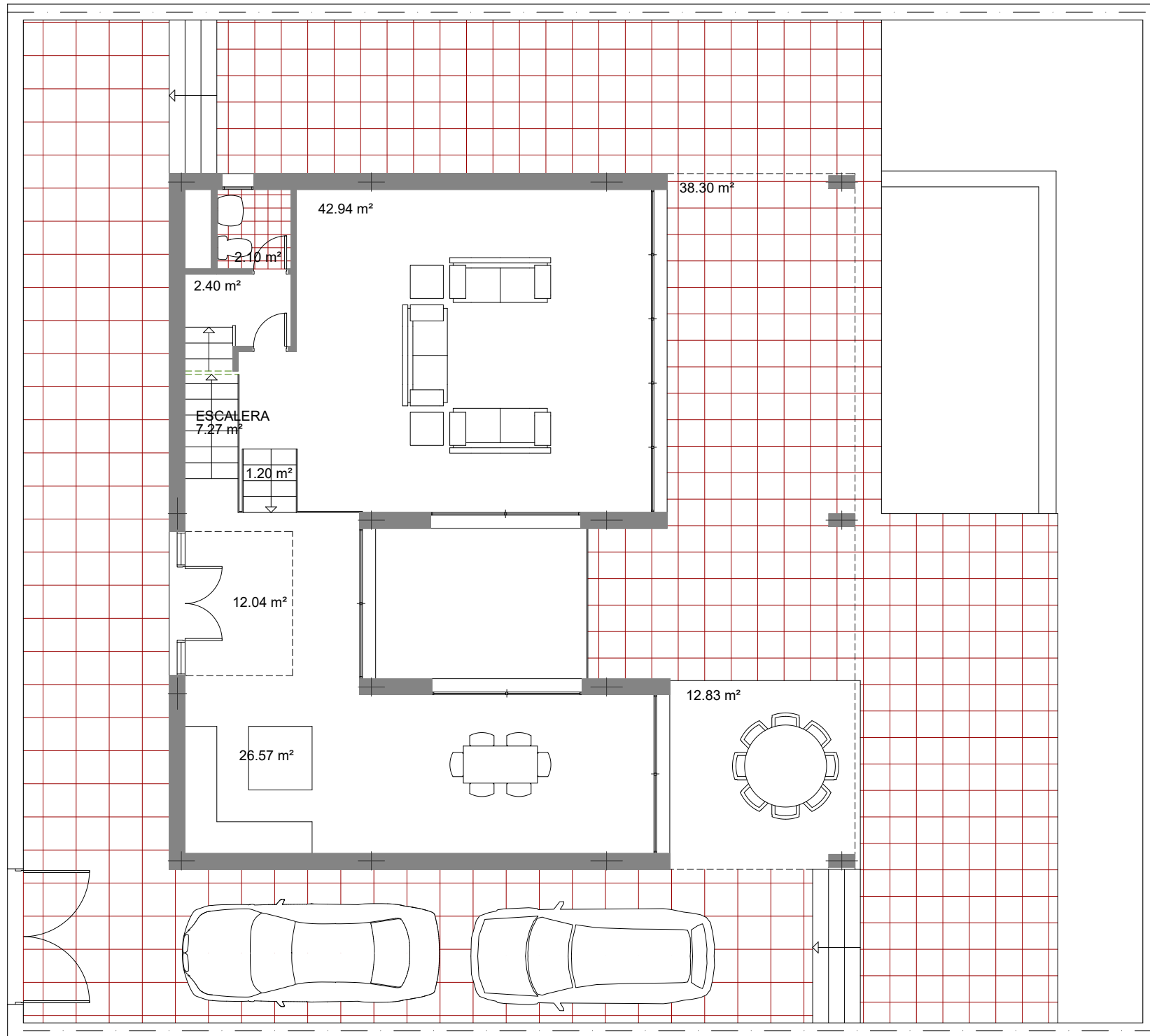
PARCELA 34 - ESTEPONA GOLF

VIVIENDAS 12-13-14-15-16

PLANTA SÓTANO

SUPERFICIE COMPUTABLE = 0.00 m²
 SUPERFICIE OCUPADA = 158.92 m²
 SUPERFICIE ÚTIL CERRADA = 133.58 m²
 SUPERFICIE PORCHE / PATIO = 11.34 m²





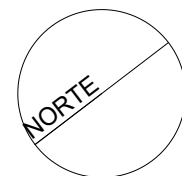
VILLAS EN ESTEPONA

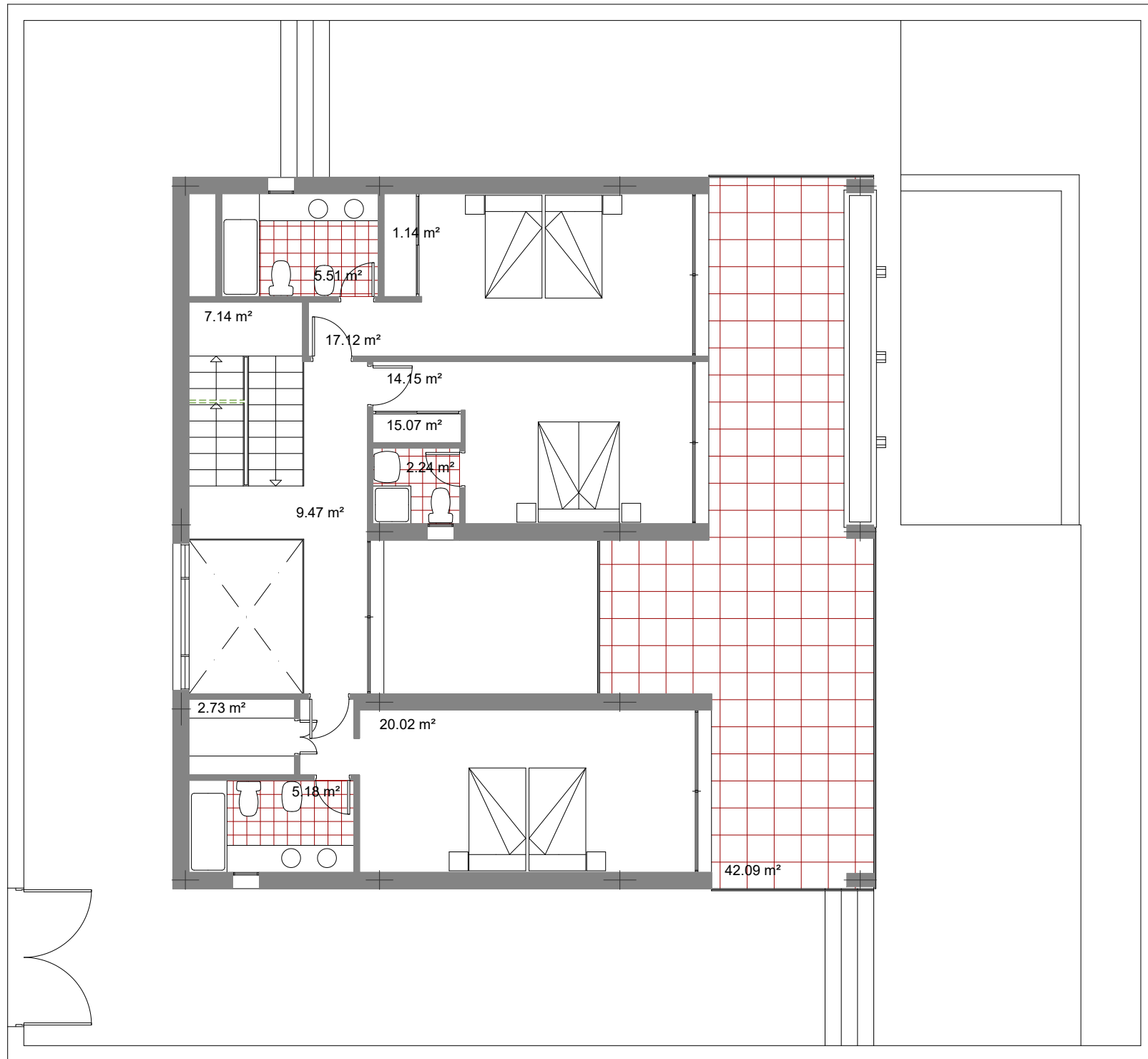
PARCELA 34 - ESTEPONA GOLF

VIVIENDAS 12-13-14-15-16

PLANTA BAJA

SUPERFICIE COMPUTABLE = 108.15 m²
 SUPERFICIE OCUPADA = 158.92 m²
 SUPERFICIE ÚTIL CERRADA = 94.52 m²
 SUPERFICIE PORCHE = 51.13 m²





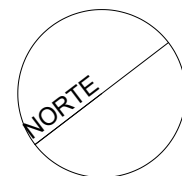
VILLAS EN ESTEPONA

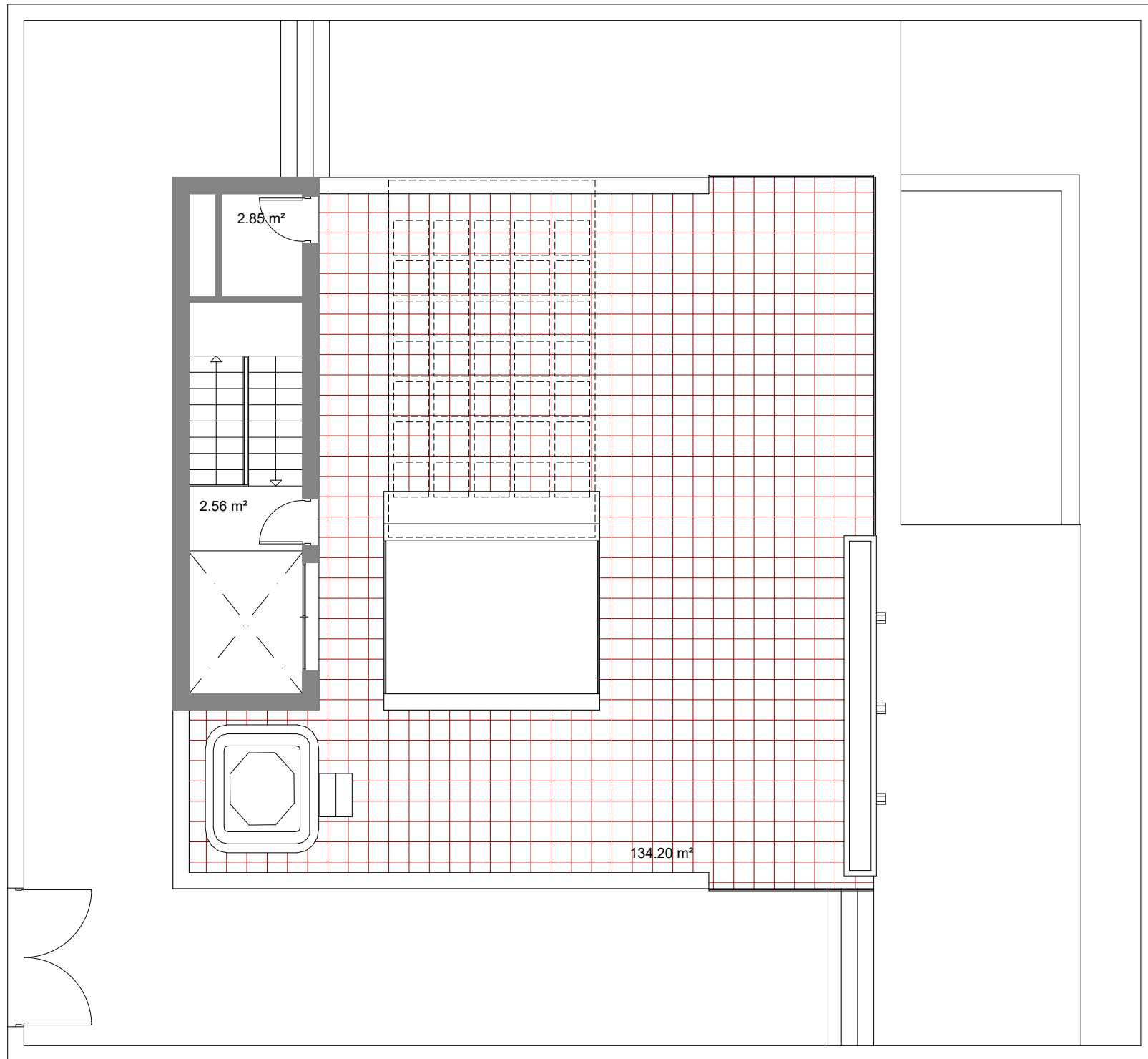
PARCELA 34 - ESTEPONA GOLF

VIVIENDAS 12-13-14-15-16

PLANTA SUPERIOR

SUPERFICIE COMPUTABLE = 107.34 m²
 SUPERFICIE OCUPADA = 158.92 m²
 SUPERFICIE ÚTIL CERRADA = 99.77 m²
 SUPERFICIE PORCHE = 42.09 m²

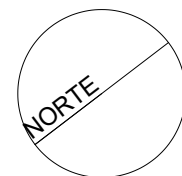


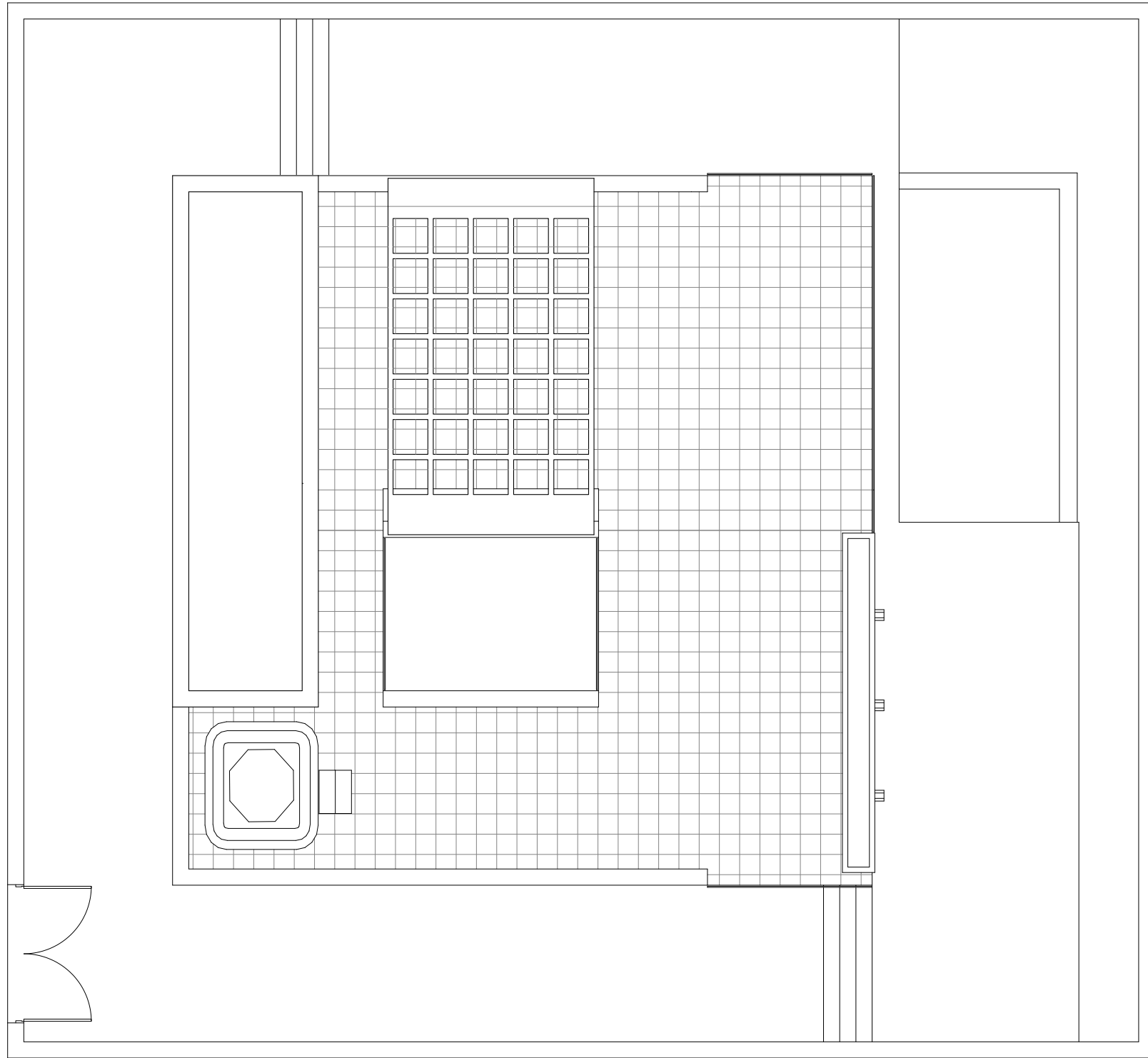


VILLAS EN ESTEPONA
PARCELA 34 - ESTEPONA GOLF
VIVIENDAS 12-13-14-15-16

"SOLARIUM"

SUPERFICIE COMPUTABLE = 21.07 m²
 SUPERFICIE OCUPADA = 26.57 m²
 SUPERFICIE ÚTIL CERRADA = 5.41 m²
 SUPERFICIE TERRAZA = 134.20 m²





VILLAS EN ESTEPONA

PARCELA 34 - ESTEPONA GOLF

CUBIERTA

SUPERFICIE COMPUTABLE = 0.00 m²
SUPERFICIE OCUPADA = 0.00 m²
SUPERFICIE ÚTIL CERRADA = 0.00 m²
SUPERFICIE TERRAZA = 0.00 m²

